



Rhif y Cais / Application Number :

C13/0611/18/AM

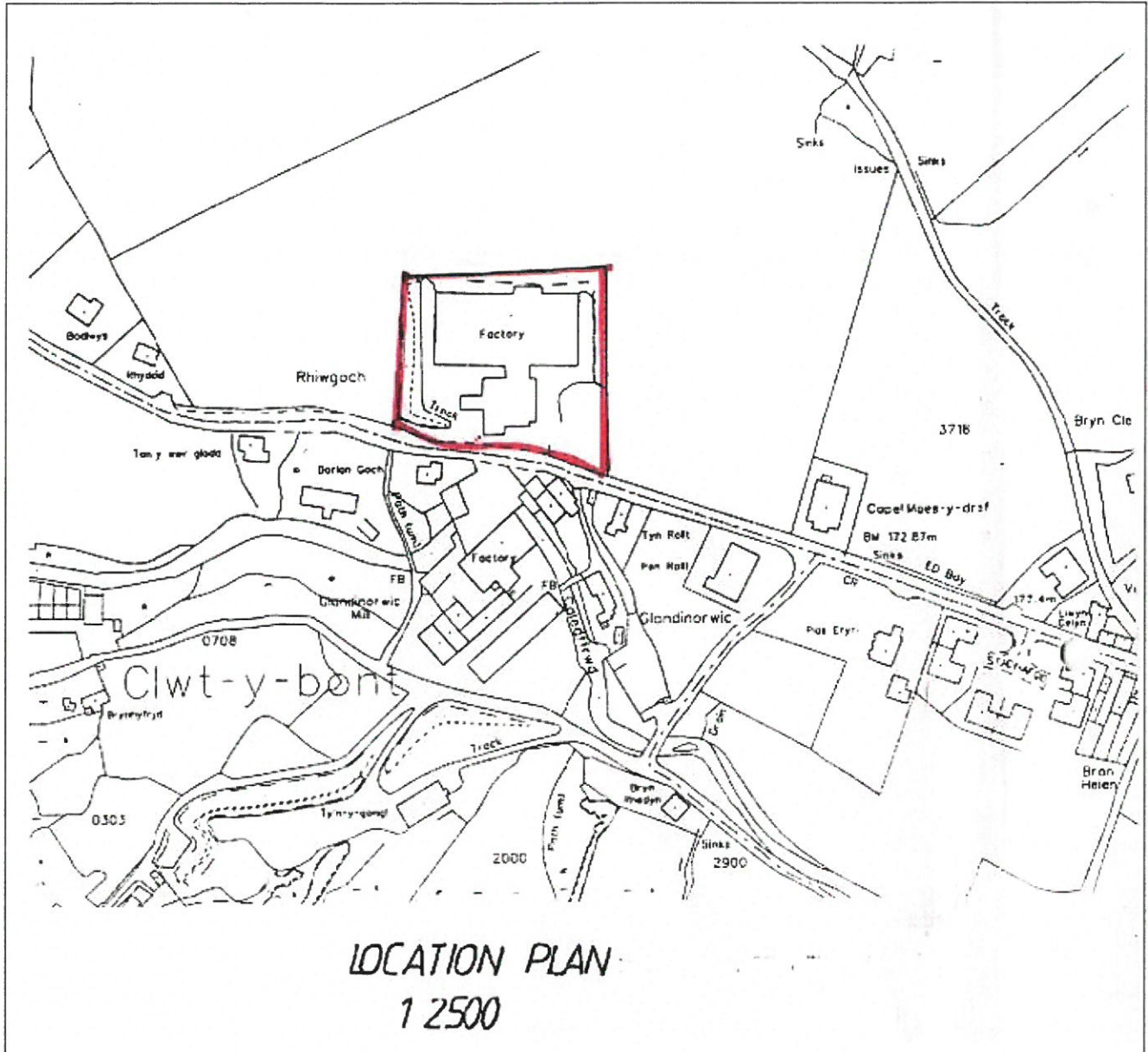
Cynllun lleoliad ar gyfer adnabod y safle yn unig. Dim i raddfa.  
Location Plan for identification purposes only. Not to scale.



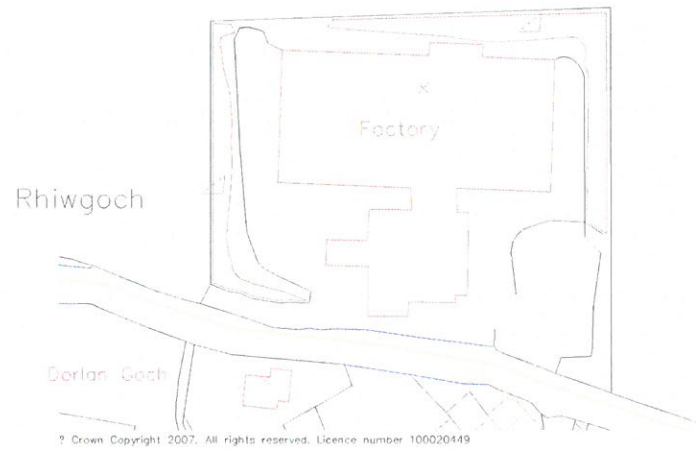
Agwedd y map hon a ddarparwyd gan Ordnance Survey  
ydy'r Cynllun Gwynedd a'r Cynllun Gwynedd  
a'r Cynllun Gwynedd a'r Cynllun Gwynedd  
© Crown Copyright  
Mae'r Cynllun hon yn parhannu'r Cynllun Gwynedd  
a'r Cynllun Gwynedd a'r Cynllun Gwynedd a'r Cynllun Gwynedd  
Cynllun Gwynedd - 1 000 000001 - 2008

This map is reproduced from Ordnance Survey material  
with the permission of Ordnance Survey  
on behalf of the Controller of Her Majesty's Stationery Office  
© Crown Copyright  
Unauthorized reproduction of this map is prohibited  
and may lead to prosecution or civil proceedings  
Cynllun Gwynedd - 1 000 000001 - 2008





Proposed New Dwellings on  
 Land at:  
 Rhiw Goch, Clwt Y Bont,  
 Deiniolen, Caernarfon,  
 Gwynedd. LL55 3DE



Rhiwgoch



Factory

Dorlan Goch

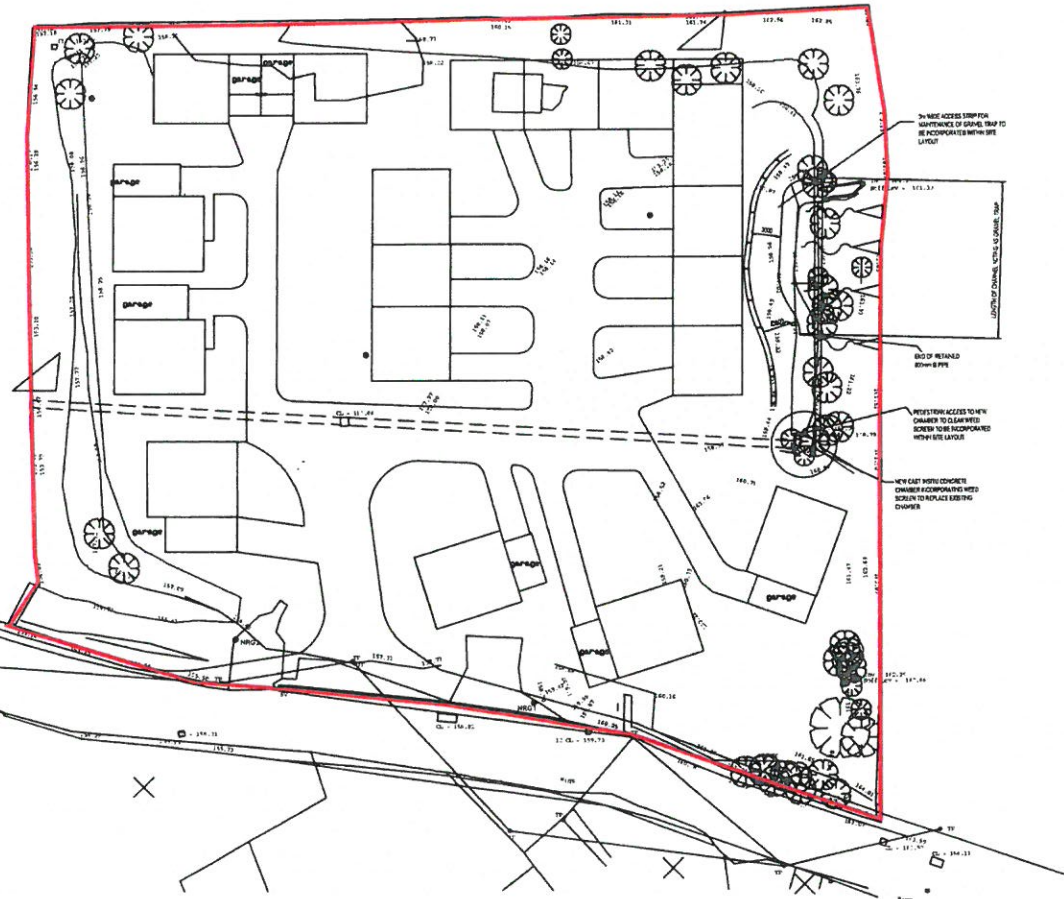
**CYNLLUN DIWYGIEDIG**  
**REVISED PLAN**

Derbyniwyd/Received 11.06.14

Llofnod/signature 

Rhiwgoch

Dorlan Goch



ON NEW ACCESS STRIP FOR  
SURVIVANCE OF SIGNAL BEAM TO  
BE INCORPORATED WITH SITE  
LAYOUT

END OF RETAINED  
EDGE-PIPE

NEW CAST CONCRETE CHAMBER  
TO CLEAR WITH  
SCREEN TO BE INCORPORATED  
WITH SITE LAYOUT

NEW CAST IN-PLACE CONCRETE  
CHAMBER TO REPLACE EXISTING  
CHAMBER

Scheme:	RHIW GOCH FCA		
Title:			
Date:	Scale:	Drawing no.	
	1:500 A3	004 - v4	