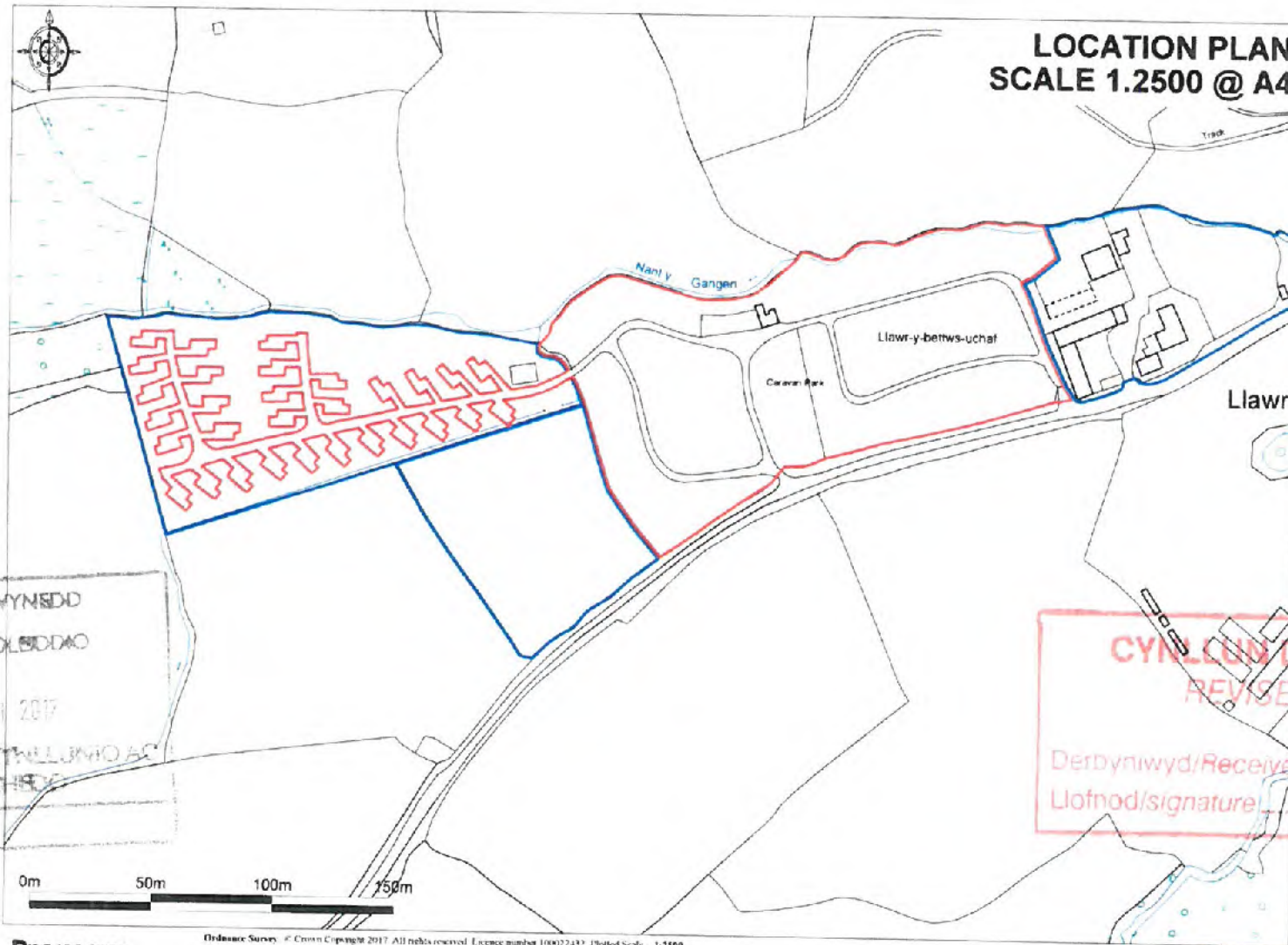


**LOCATION PLAN
SCALE 1:2500 @ A4**



Promap

Ordnance Survey. © Crown Copyright 2017. All rights reserved. Licence number 100022492. Plotted Scale = 1:2500

Llawr Betws Caravan Park, Glanrafon,
Corwen, Denbighshire LL21 0HD





Proposed Native Tree and Shrub Planting Beds E, F, & H	Size	Form	Min Bed E	Min Bed F	Min Bed H	Notes
Beds to be planted at 1m x 1m spacing vs staggered rows						Bed E = 2m ²
Bed D Native species suggested over 100m centres @ 60m apart						Bed F = 30m ²
Planting at 1m x 1m						Bed H = 25m ²
<i>Corvus alba</i>	450-600mm	B	10	30		
<i>Corvus alba</i>	450-600mm	B	20		25	
<i>Ulex europaeus</i>	450-600mm	C	5	5	5	Min 3 plants in lower line
<i>Pinus sylvestris</i>	300-450mm	A	10	10	12	Can grow
<i>Sambucus nigra</i>	450-600mm	B	5	5	10	

Drill/Burg holes, 0.1m container grown
Min 1000 litres
Planting to be protected with tree and shrub shelters



Proposed Native Hedging Beds A, B, C, D & G	Size	Form	Hedge A	Hedge B	Hedge C	Hedge D	Hedge G
Native hedge & shrub suggested over 100m centres @ 60m apart			10	20	40	24	15
<i>Corvus alba</i>	450-600mm	B	60				
<i>Ulex europaeus</i>	450-600mm	C	5				
<i>Pinus sylvestris</i>	300-450mm	A	30				
<i>Sambucus nigra</i>	450-600mm	B	40				

Drill/Burg holes, 0.1m container grown
Min 1000 litres
Planting to be protected with tree and shrub shelters and raised back to 450mm before planting. Plus stock control fencing if grazed

Existing Native Hedging	Size	Form	Hedge 1	Hedge 2	Hedge 3	Hedge 4	Hedge 5	Hedge 6	Hedge 7
Existing hedging suggested over 100m centres @ 60m apart			10	20	40	24	15		
<i>Corvus alba</i>	450-600mm	B	10			30		50	
<i>Ulex europaeus</i>	450-600mm	C	5			10	30	10	
<i>Pinus sylvestris</i>	300-450mm	A	10	5		40			
<i>Sambucus nigra</i>	450-600mm	B	10			20			

Drill/Burg holes, 0.1m container grown
Min 1000 litres
Planting to be protected with tree and shrub shelters where necessary and raised back to 450mm before planting and protected with stock control fencing if grazed



Proposed Native Hedgepole Trees	Size	Form	Notes
<i>Alnus glutinosa</i>	100-120cm	B	Ag
<i>Quercus petraea</i>	100-120cm	B	Bp
<i>Quercus robur</i>	100-120cm	B	Q

Planting into prepared pits or trench channels
Drill/Burg holes, 0.1m container grown
Min 1000 litres
Planting to be protected with tree and shrub shelters



Topsoil conditions will ensure a minimum depth of 200mm topsoil bedding below with a 100mm of growing medium to provide a rooting depth of an compacted material. Concrete and other non-organic materials are to be used before planting and all temporary areas will be cultivated to full topsoil depth before starting into place.

Planting
Site work planting to be implemented between December and March wherever possible when species are dormant and planted in accordance with BS 6475:1995 Code of practice for general landscape operations (excluding trees & shrubs). Native species are to be installed as root barriers, whips, and bare-rooted in order to establish within the proposed location.
Native tree hedge bases are to be created from oval topsoil (dca 400mm AOD) to raise the planting and some from waterlogging conditions to air environment and top replace some landscape features.
All plants to be set planted into existing ground, using prepared pits with live and straw shade protection and maintained to provide healthy and vigorous growth. To reduce herbicide planting, weed control, jacking and disease control and fertiliser application.
Any retained vegetation requires water tank to be provided with use of water.
Tree shelter use to be removed as soon as practicable once establishment is satisfactory. Larger shelter areas will be planted into sunbake, prepared pits, raised beds of heavy planting will take place into prepared pits at the densities indicated or noted according to ground conditions.
Maintenance
Maintenance to be carried out on external regular basis to include pruning, plant removal and tree bed checking, adjusting and removal, weed control, soil mixing, fertilizer application, form-shape pruning, tree shelter checking and removal, watering, tracking, grass cutting and pest and disease control.

Soft landscape proposals:
The soft landscape proposals include have been developed following a field assessment of the existing site and to complement the overall scheme and the development process to ensure the project setting is enhanced and strengthened where necessary.
The site proposals will be based on topography and existing native vegetation in the form of native hedging with hedgerow trees and established riparian woodland within the adjacent flood plain.
Further planting proposals landscape planning considers the natural and wooded setting of the site, whilst providing useful habitat, biodiversity value and landscape integration.
Native Landscaping proposals:
The soft landscape proposals aim to reflect the existing site context and strengthen the existing landscape character through the use of planting native species and shrubs.
Planting density is related to provide overall biodiversity profile and retention of habitat species or sets, or the removal of existing Levee/Drain beds planted over 40 years ago is proposed over a phased 5 year period to trials covering the site and the flood embankment.
Native species have been selected from the riparian site, locally to reflect the site context and existing ground conditions, such as Blackthorn, Hawthorn, Hazel, Dog Rose, Wildist, Dog, Birch and Hawthorn.
An is widely present today but has not been included within the proposed site as it poses due to the risk of Chytrid or Ash Dieback / Phytophthora dieback from its related nursery stock as appropriate with level in section.

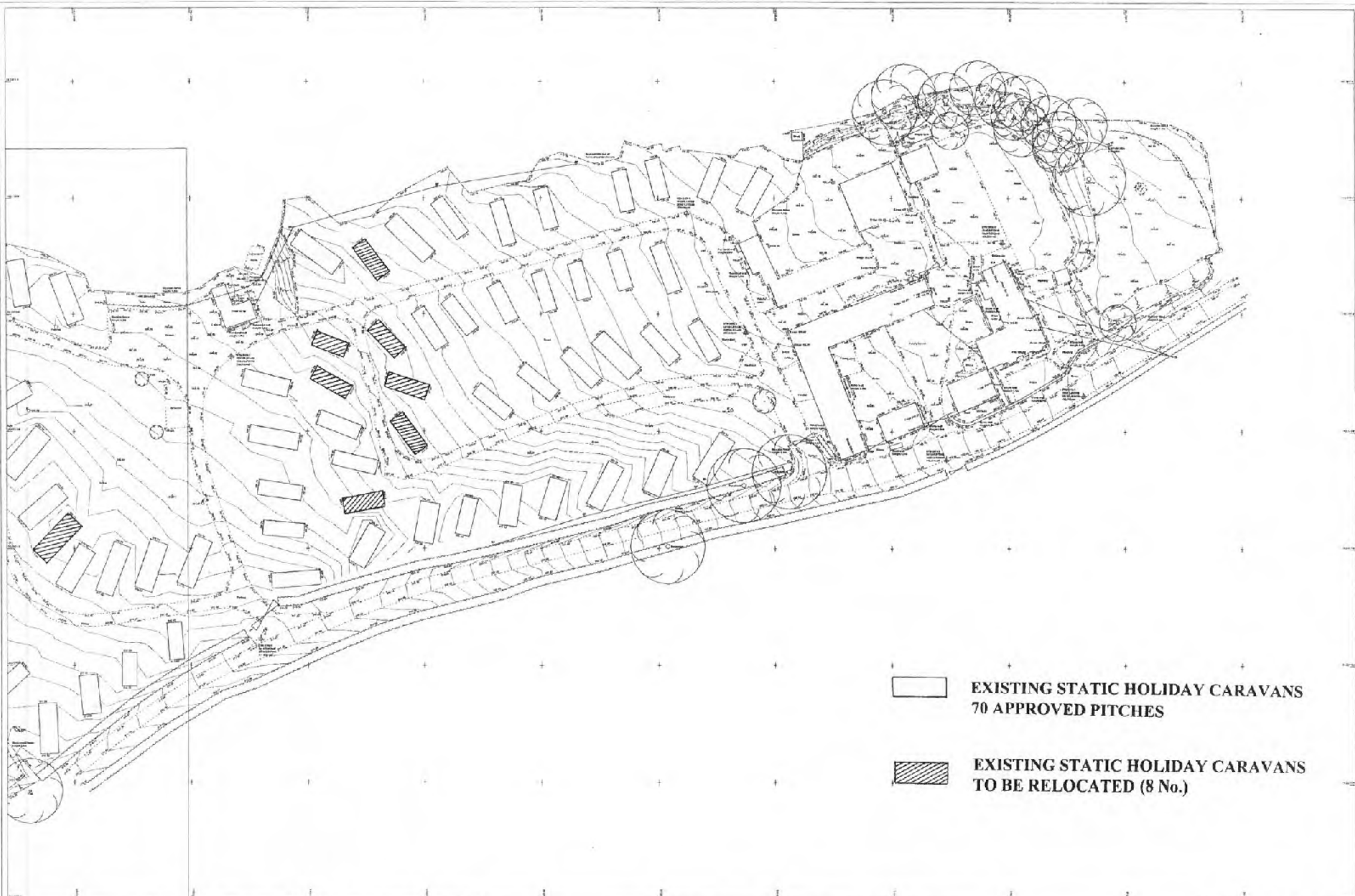
- The planting will be primarily for landscape integration and to provide a visual screening and landscape integration, it will also be selected with particular regard to increasing habitat connectivity potential.
 - See a HPI planting is proposed where existing hedging trees are capable up and this will include the use of native species, with numbers and positions detailed on site.
- The native planting proposal is proposed to be of high importance wherever possible and to be planted in full, topsoil and soil conditions to be established and local diversity of tree.
- Initial establishment will be aided by tree shelters and temporary wooden fencing and riparian management and a surveillance and maintenance plan to be established at the location of the site.
- The proposed planting area within the site area and the waste have been detailed to reflect the site context of the site.
- Plant spacing and size are the minimum to effectively achieve a good level of site amenity, as well as possible whilst not compromising long term establishment.
- Key to plant codes:**
C = container grown
B = bare-rooted
Q = tree rooted
R = root barrier


Key

- Existing Specimen Tree to be retained
- Existing Native Hedging to remain
- Proposed Native Planting & Hedging
- Proposed Specimen Native Standard Trees
- Area of interest (existing to be retained and 5 year period not to be removed or replaced)
- Existing and Proposed Amenity Grassland
- Proposed new units
- Existing Units

NOTES:
1. Existing hedging to be retained in accordance with BS 6475:1995 Code of practice for general landscape operations (excluding trees & shrubs).
2. Existing hedging to be retained in accordance with BS 6475:1995 Code of practice for general landscape operations (excluding trees & shrubs).
3. Existing hedging to be retained in accordance with BS 6475:1995 Code of practice for general landscape operations (excluding trees & shrubs).
4. Existing hedging to be retained in accordance with BS 6475:1995 Code of practice for general landscape operations (excluding trees & shrubs).
5. Existing hedging to be retained in accordance with BS 6475:1995 Code of practice for general landscape operations (excluding trees & shrubs).
6. Existing hedging to be retained in accordance with BS 6475:1995 Code of practice for general landscape operations (excluding trees & shrubs).
7. Existing hedging to be retained in accordance with BS 6475:1995 Code of practice for general landscape operations (excluding trees & shrubs).
8. Existing hedging to be retained in accordance with BS 6475:1995 Code of practice for general landscape operations (excluding trees & shrubs).
9. Existing hedging to be retained in accordance with BS 6475:1995 Code of practice for general landscape operations (excluding trees & shrubs).
10. Existing hedging to be retained in accordance with BS 6475:1995 Code of practice for general landscape operations (excluding trees & shrubs).

Rev D	PW	JB	JB	29/01/18	Client
					Lawr Betws Leisure Ltd Project Title
Chartered Landscape Architects Tacy Barlan, Llanbedry Carwin, CONWY LL32 8JY Tel: 01492 650333					Lawr Betws Caravan Park Nr. Corwen, Gwynedd
Drawing Number	16/09/PP/01	Drawing Title			Soft Landscape Proposals
A1	1:500 at A1	Rev D			



 **EXISTING STATIC HOLIDAY CARAVANS**
70 APPROVED PITCHES

 **EXISTING STATIC HOLIDAY CARAVANS**
TO BE RELOCATED (8 No.)

NOTES
 1. ALL DISTANCES ARE IN METRES UNLESS OTHERWISE STATED
 2. ALL DISTANCES ARE TO CENTRE UNLESS OTHERWISE STATED
 3. ALL DISTANCES ARE TO CENTRE UNLESS OTHERWISE STATED
 4. ALL DISTANCES ARE TO CENTRE UNLESS OTHERWISE STATED

INFORMATION
 1. ALL DISTANCES ARE IN METRES UNLESS OTHERWISE STATED
 2. ALL DISTANCES ARE TO CENTRE UNLESS OTHERWISE STATED
 3. ALL DISTANCES ARE TO CENTRE UNLESS OTHERWISE STATED
 4. ALL DISTANCES ARE TO CENTRE UNLESS OTHERWISE STATED

KEY TO ABBREVIATIONS
 1. ALL DISTANCES ARE IN METRES UNLESS OTHERWISE STATED
 2. ALL DISTANCES ARE TO CENTRE UNLESS OTHERWISE STATED
 3. ALL DISTANCES ARE TO CENTRE UNLESS OTHERWISE STATED
 4. ALL DISTANCES ARE TO CENTRE UNLESS OTHERWISE STATED

TITLE
 LLAWRBEITHS CARAVAN PARK, CORMEN, DENBIGHSHIRE
 FOR MR & MRS EVANS
 TOPOGRAPHICAL SURVEY

DIGITAL MAPPING SURVEYS
 Land & Engineering Surveyors
 UNIT 1, THE CHERRY TREE BARN, IMBOTHAM ROAD
 WOODS, NORTH WALLEY, LEAFS, LEY, NOTTINGHAM
 TELEPHONE: 0115 2411 2412 / 241123
 EMAIL: DM@DIGITALMAPPINGSURVEYS.CO.UK