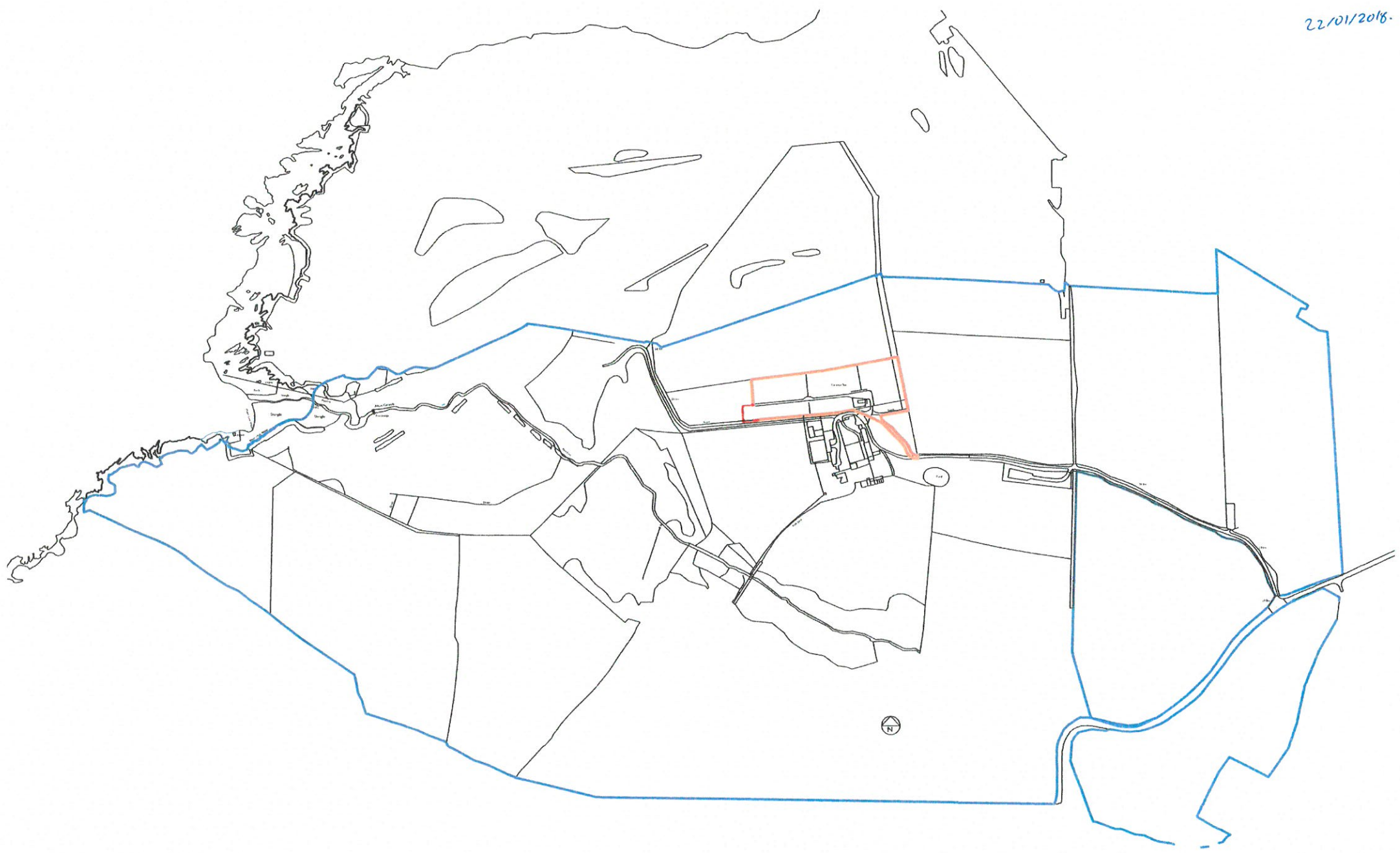


Rhif y Cais / Application Number : C15/1358/42/LL

Cynllun lleoliad ar gyfer adnabod y safle yn unig. Dim i raddfa.
Location Plan for identification purposes only. Not to scale.



22/01/2016.



Peidiwch a chymryd mesuriau graffig oddi ar y dyluniad hwn
 Os yn amau - gofynnwch
 Do not scale from this drawing
 If in doubt - ask

Mae'r dyluniad hwn yn hawlfraint Penseiri Russell-Hughes ac ni
 chaniateir ei gopïo neu ei atgolyrchu heb ganiateir

This drawing is the copyright of Russell-Hughes architects and
 must not be copied or reproduced without permission

Cynllun - Job
**FFERM PORTHDINLLAEN,
 NEFTYN**
 Dyluniad - Drawing
LOCATION PLAN

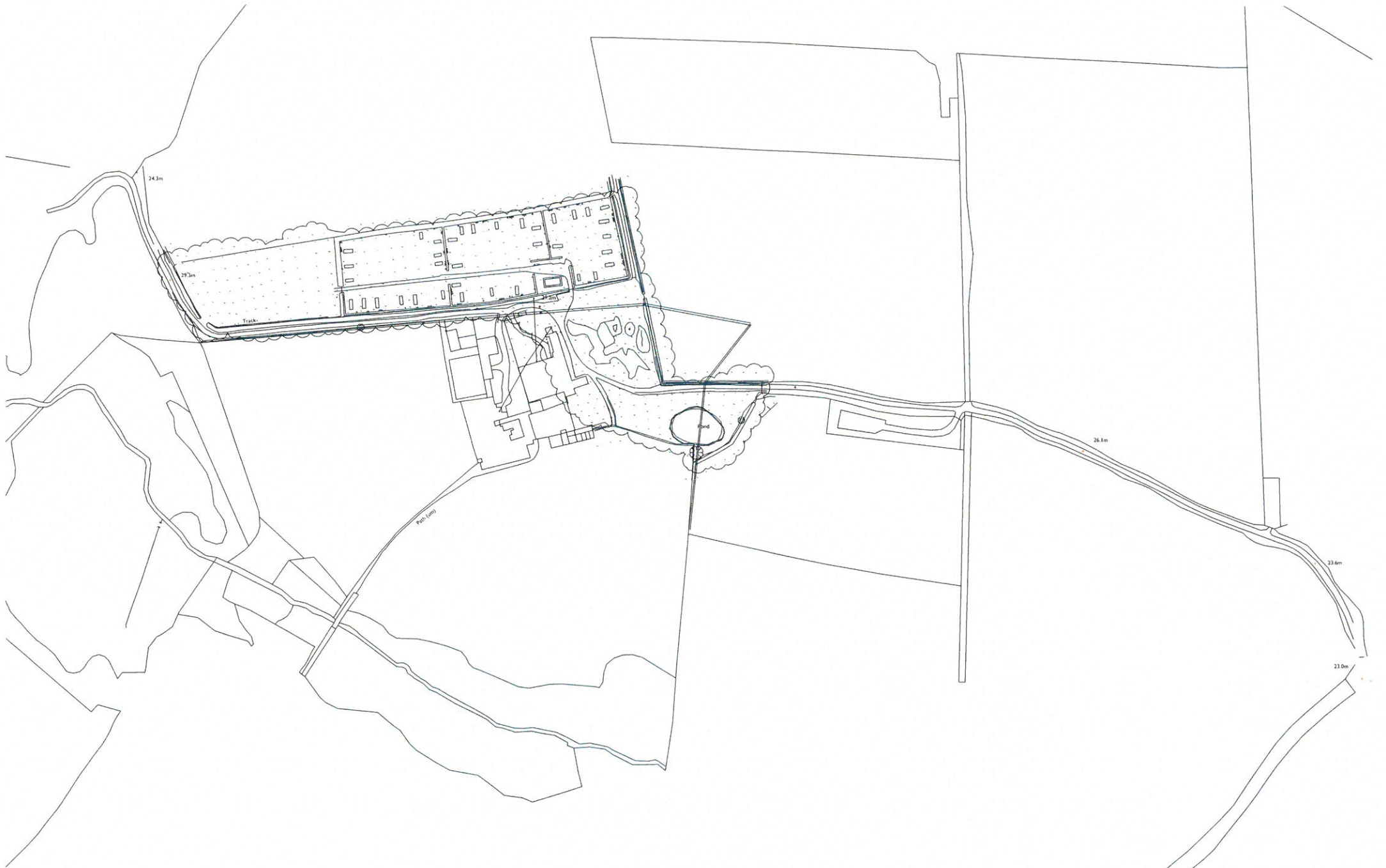
Rif Dyluniad - Drawing No
2304:15:1
 Graffig - Scale
1:5000 @ A3
 Dyddiad - Date
Dec 2015

russell-hughes cyf
 penseiri/architects



56 Bridge Street,
 Llangefni,
 Ynys Môn
 LL77 7HH

Tel: 01248 722333
 Fax: 01248 750600
 E-mail: info@russellhughes.co.uk



Peidiwch a chymryd mesuriadau graddfa oddi ar y dyluniad hwn
 Os yn amau - gofynnwch
 Do not scale from this drawing
 If in doubt - ask

Mae'r dyluniad hwn yn hawffraint Pensaert Russell-Hughes ac ni
 chysseir ei gopïo neu ei sigmhyrchi heb ganiatâd
 This drawing is the copyright of Russell-Hughes architects and
 must not be copied or reproduced without permission

Cynllun - Job
**FFERM PORTHDINLLAEN,
 NEFYN**
 Dyluniad - Drawing
EXISTING SITE PLAN

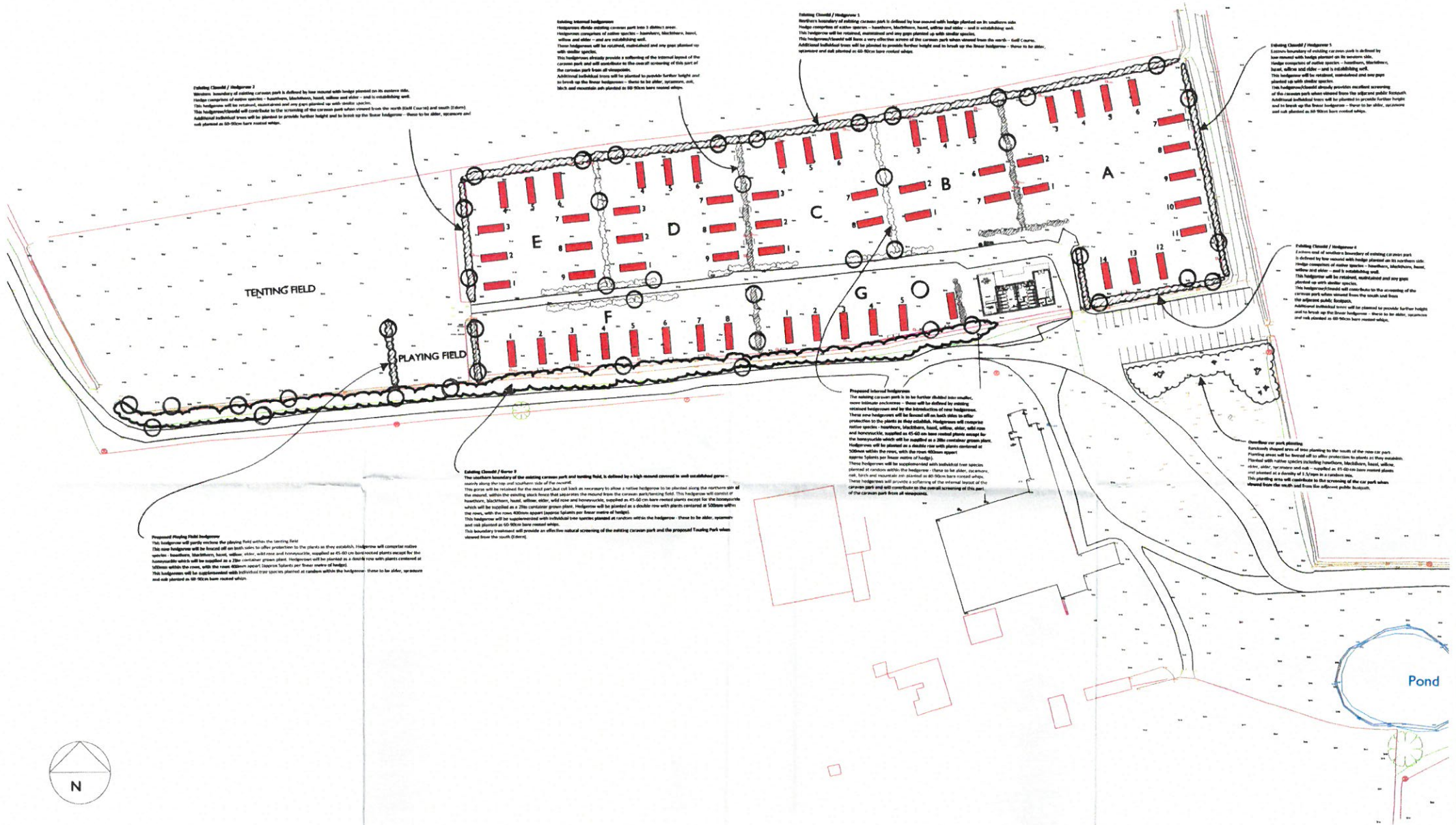
Rhif Dyluniad - Drawing No.
2304:15:2B
 Graddfa - Scale
1:1250 @ A1
 Dyddiad - Date
Dec 2015

russell-hughes cyf
 penseiri/architects



56 Bridge Street,
 Llangefni,
 Ynys Mon
 LL77 7HH

Tel: 01248 722333
 Fax: 01248 750600
 E-mail: info@russellhughes.co.uk



Existing Hedgerow / Hedgerow 7
 Northern boundary of existing caravan park is defined by low mixed with hedge planted on its southern side.
 Hedgerow composition of native species - Hawthorn, Blackthorn, hazel, willow and alder - and is stabilising well.
 This hedgerow will be retained, maintained and any gaps planted up with similar species.
 This hedgerow should already provide excellent screening of the caravan park when viewed from the north (Black Course) and south (Dyers).
 Additional individual trees will be planted to provide further height and to break up the linear hedgerow - these to be alder, sycamore and oak planted at 60-90cm bare root stock.

Existing Hedgerow / Hedgerow 1
 Northern boundary of existing caravan park is defined by low mixed with hedge planted on its southern side.
 Hedgerow composition of native species - Hawthorn, Blackthorn, hazel, willow and alder - and is stabilising well.
 This hedgerow will be retained, maintained and any gaps planted up with similar species.
 This hedgerow should already provide excellent screening of the caravan park when viewed from the north - Black Course.
 Additional individual trees will be planted to provide further height and to break up the linear hedgerow - these to be alder, sycamore and oak planted at 60-90cm bare root stock.

Existing Hedgerow / Hedgerow 3
 Eastern boundary of existing caravan park is defined by low mixed with hedge planted on its southern side.
 Hedgerow composition of native species - Hawthorn, Blackthorn, hazel, willow and alder - and is stabilising well.
 This hedgerow will be retained, maintained and any gaps planted up with similar species.
 This hedgerow should already provide excellent screening of the caravan park when viewed from the adjacent public footpath.
 Additional individual trees will be planted to provide further height and to break up the linear hedgerow - these to be alder, sycamore and oak planted at 60-90cm bare root stock.

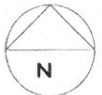
Existing Hedgerow / Hedgerow 4
 Eastern end of southern boundary of existing caravan park is defined by low mixed with hedge planted on its southern side.
 Hedgerow composition of native species - Hawthorn, Blackthorn, hazel, willow and alder - and is stabilising well.
 This hedgerow will be retained, maintained and any gaps planted up with similar species.
 This hedgerow should already provide excellent screening of the caravan park when viewed from the south and from the adjacent public footpath.
 Additional individual trees will be planted to provide further height and to break up the linear hedgerow - these to be alder, sycamore and oak planted at 60-90cm bare root stock.

Proposed Internal Hedgerow
 The existing caravan park is to be further divided into smaller, more intimate enclosures - these will be defined by existing retained hedgerow and by the introduction of new hedgerows.
 These new hedgerows will be based off on both sides to either protection to the plants as they establish, hedgerows will comprise native species - Hawthorn, Blackthorn, hazel, willow, alder, wild rose and honeysuckle, supplied in 45-60 cm bare rooted plants except for the honey-suckle which will be supplied in a 30cm container grown plant.
 Hedgerows will be planted in a double row with plants centered at 50cm within the row, with the row 40cm apart.
 These hedgerows will be supplemented with individual tree species planted at random within the hedgerow - these to be alder, sycamore, oak and planted at 60-90cm bare root stock.
 This boundary treatment will provide an effective natural screening of the existing caravan park and the proposed playing field when viewed from the south (Black).

Existing Hedgerow / Hedgerow 2
 The southern boundary of the existing caravan park and tenting field, is defined by a high mixed covered in well established grass - swards along the top and southern side of the road.
 This grass will be retained for the most part but cut back as necessary to allow a native hedgerow to be planted along the northern side of the road, within the existing grass hedge that separates the caravan park and tenting field. This hedgerow will consist of Hawthorn, Blackthorn, hazel, willow, alder, wild rose and honeysuckle, supplied in 45-60 cm bare rooted plants except for the honeysuckle which will be supplied in a 30cm container grown plant.
 Hedgerows will be planted in a double row with plants centered at 50cm within the row, with the row 40cm apart (except 50cm between the rows).
 This hedgerow will be supplemented with individual tree species planted at random within the hedgerow - these to be alder, sycamore and oak planted at 60-90cm bare root stock.
 This boundary treatment will provide an effective natural screening of the existing caravan park and the proposed playing field when viewed from the south (Black).

Proposed Playing Field Hedgerow
 This hedgerow will partly enclose the playing field within the tenting field.
 This new hedgerow will be based off on both sides to offer protection to the plants as they establish. Hedgerow will comprise native species - Hawthorn, Blackthorn, hazel, willow, alder, wild rose and honeysuckle, supplied in 45-60 cm bare rooted plants except for the honeysuckle which will be supplied in a 30cm container grown plant.
 Hedgerows will be planted in a double row with plants centered at 50cm within the row, with the row 40cm apart (except 50cm between the rows).
 This hedgerow will be supplemented with individual tree species planted at random within the hedgerow - these to be alder, sycamore and oak planted at 60-90cm bare root stock.

Overlook over parking
 Bankside street area of new playing to the south of the new car park.
 Planting areas will be based off on both sides to offer protection to plants as they establish.
 Planted with native species including Hawthorn, Blackthorn, hazel, willow, alder, sycamore and oak - supplied in 45-60 cm bare rooted plants.
 and planted at a density of 3 trees in a random row.
 This planting area will contribute to the screening of the car park when viewed from the north and from the adjacent public footpath.



Ffwrdd a clypdwr masnachol gddid odd i'w ddiwydion
 O's yn arwas - gofymwch
 Do not scale from this drawing
 If in doubt - ask
 Plan/tydied from an approved Person Russell-Hughes or a
 Director of public use of registered land granted
 This drawing is the copyright of Russell-Hughes architects and
 must not be copied or reproduced without permission

Neddiadau - Amendments

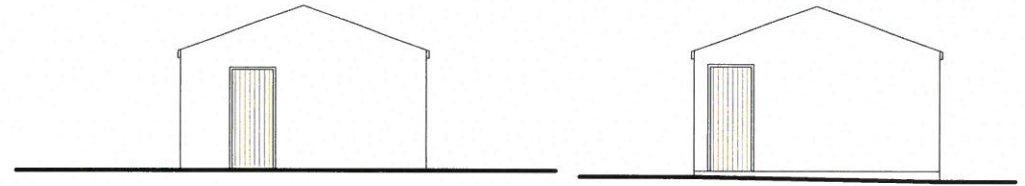
Caravan - Job
CARAVAN PARK,
FFARM PORTHDINLLAEN
 Dyfed - Drawing
PROPOSED SITE PLAN - LANDSCAPING DETAILS

Rd/ Dyfied - Drawing No.
2304/15/3
 Graddfa - Scale
1:500 @ A1
 Dyddiad - Date
May 2015

russell-hughes cyf
 PARTNER ARCHITECTS

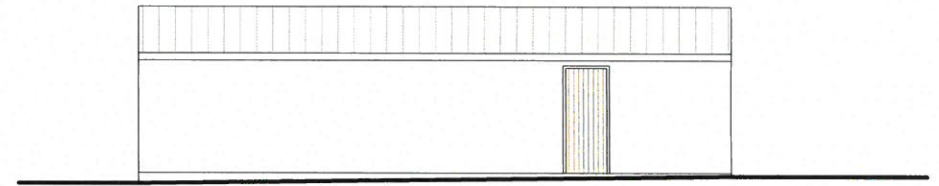
CYNGOR GWYBIEDD
 ADRIAN RHODES
 2 2 BIA
 GWYBODAETH CYNLLUNIO AC
 IMYDOLGAREDD
 LL77 7HH

56 Bridge Street,
 Llangefni,
 Ynys Môn
 LL77 7HH
 Tel: 01248 72333
 Fax: 01248 750600
 E-mail: info@russellhughes.co.uk



SIDE ELEVATION

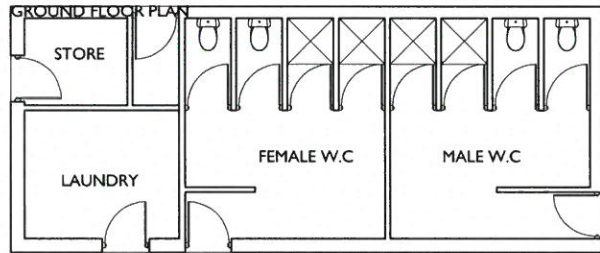
SIDE ELEVATION



FRONT ELEVATION



FRONT ELEVATION



GROUND FLOOR PLAN

Peldwch a chymryd mesurïadau graddfa oddi ar y dyluniad hwn
Os yn amau - gofynnwch
Do not scale from this drawing
If in doubt - ask

Mae'r dyluniad hwn yn hawlfraint Penseiri Russell-Hughes ac ni
chaniateir ei gopïo neu ei atgynhyrchu heb ganiatod

This drawing is the copyright of Russell-Hughes architects and
must not be copied or reproduced without permission

Newidïadau - Amendments

Cyfrinllun - Job

**FFARM PORTHDINLLAEN,
NEFYN.**

Dyluniad - Drawing

AS EXISTING

Rhif Dyluniad - Drawing No.

2304:15:4

Graddfa - Scale

1:100 @ A3

Dyddiad - Date

July 2015

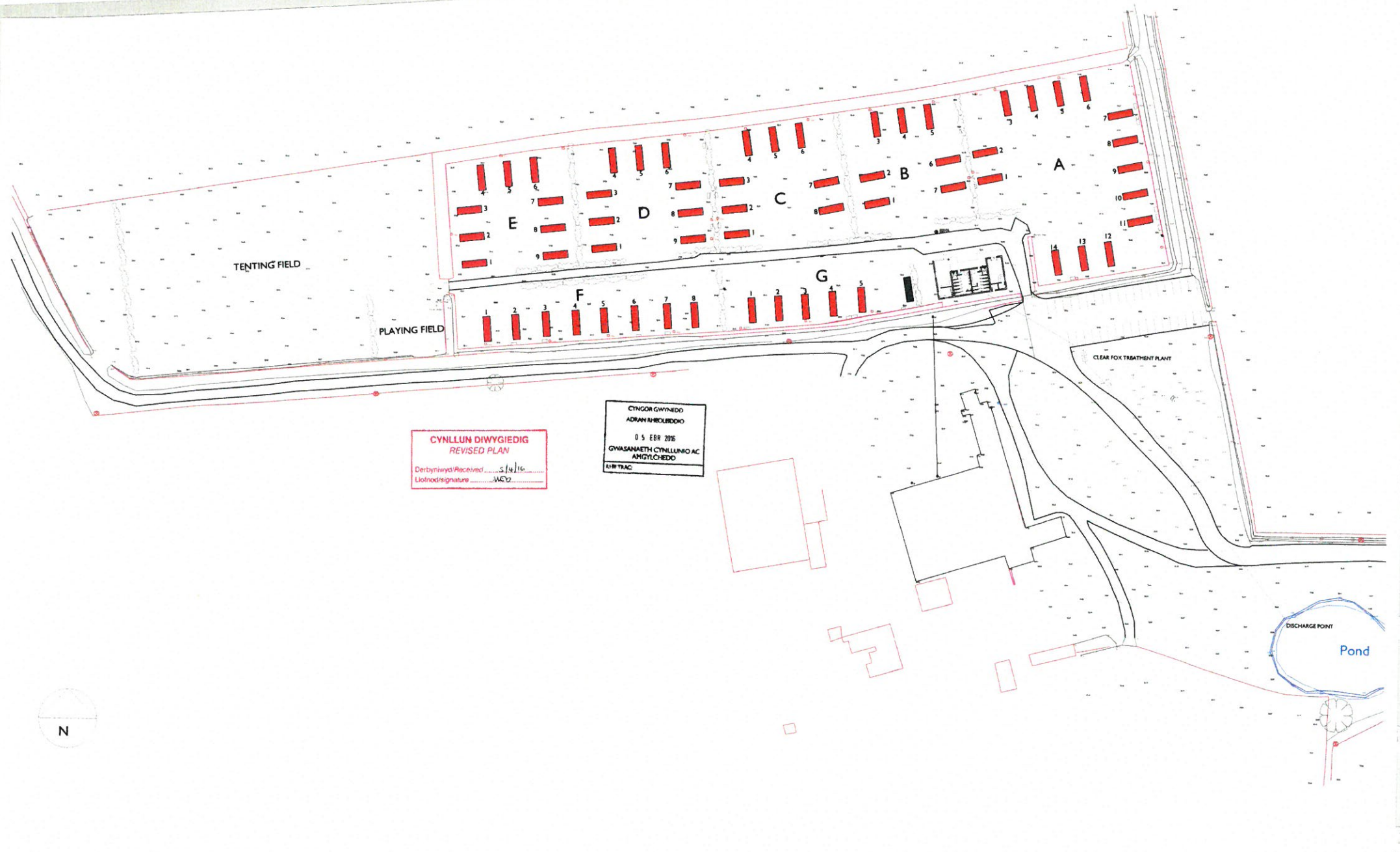
russell-hughes cyf
penseiri/architects

56 Bridge Street,
Llangefni,
Ynys Mon
LL77 7HH

Tel: 01248 722333

Fax: 01248 750600

E-mail: info@russellhughes.co.uk



CYNLLUN DIWYGIEDIG
REVISED PLAN
 Derbyniwyd/Received 5/4/16
 Llofnodi/signature WEG

CYNGOR GWYNEDD
 ADUAN ARCHUBODD
 05 EBR 2016
 GWASANAETH CYNLLUNIO AC
 AHZYLCHEDD
 AIR TRAC

Planellu a chyfrifd mae'r plan yn gwrthodoli os ydych chi'n ddiatol hys
 Os yn amau - gofynnwch
 Do not scale from this drawing
 If in doubt - ask
 Plan' ddiatol hys yn hysbysu Penwybwr Russell-Hughes ac ni
 chofnodi os gwybwr neu os signddych chi hys gwrthodoli
 This drawing is the copyright of Russell-Hughes architects and
 must not be copied or reproduced without permission

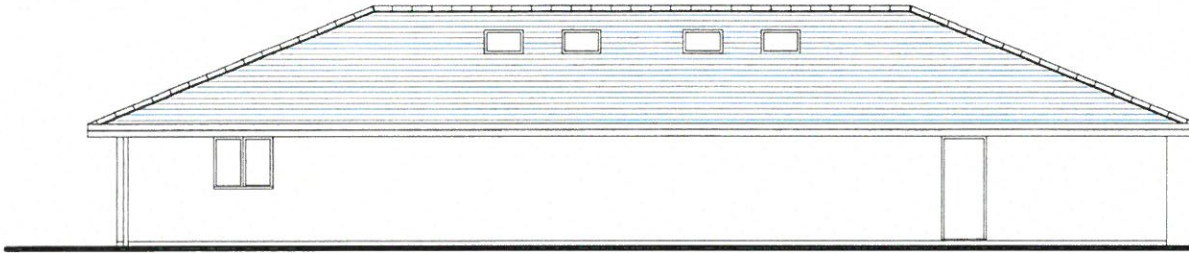
Ymudiadau - Amendments

Cynllun - Job
CARAVAN PARK,
FFARM PORTHDINLLAEN
 Dymuniad - Drawing
PROPOSED SITE PLAN

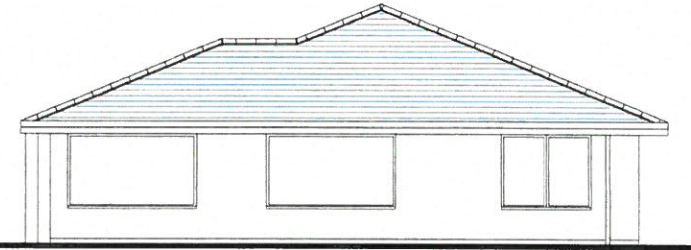
Rif Ddiatol - Drawing No
2304-15:3a
 Graddfa - Scale
1:500 @ A1
 Datblygwyd - Date
APR 2016

russell-hughes cyf
 pensior/architects

56 Bridge Street,
 Llangefni,
 Ynys Môn
 LL77 7HH
 Tel: 01248 722333
 Fax: 01248 750600
 E-mail: info@russell-hughes.com



REAR ELEVATION



SIDE ELEVATION

CYNLLUN DIWYGIEDIG
REVISED PLAN

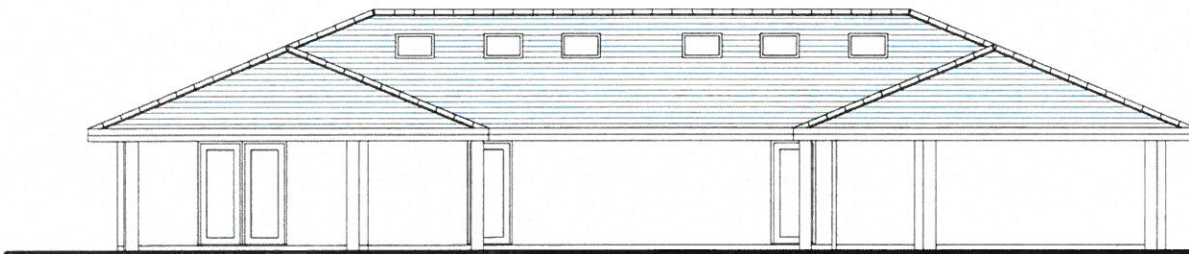
Derbyniwyd/Received 5/4/16
 Llofnod/signature *NEW*

CYNGOR GWYNEDD
 ADRAN RHOLEIDDIO

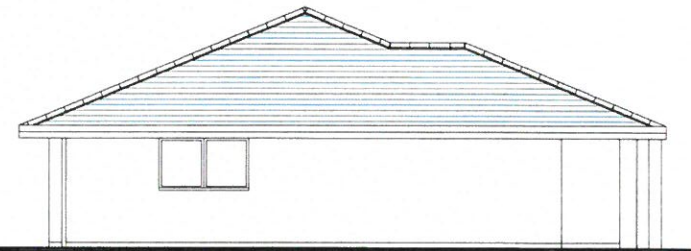
5 EBR 2016

GWASANAETH CYNLLUNIO AC
 AMGYLCHEDD

RHIF TRAC:



FRONT ELEVATION



SIDE ELEVATION

Paidwch a chymryd mesurtau grafffa oddi ar y dylunad hwn
 Os yn amau - gofynnwch
 Do not scale from this drawing
 If in doubt - ask

Newidadau - Amendments

Cynllun - Job
**FFERM PORTHDINLLAEN,
 CARAVAN PARK**
 Dylunad - Drawing
PROPOSED ELEVATIONS

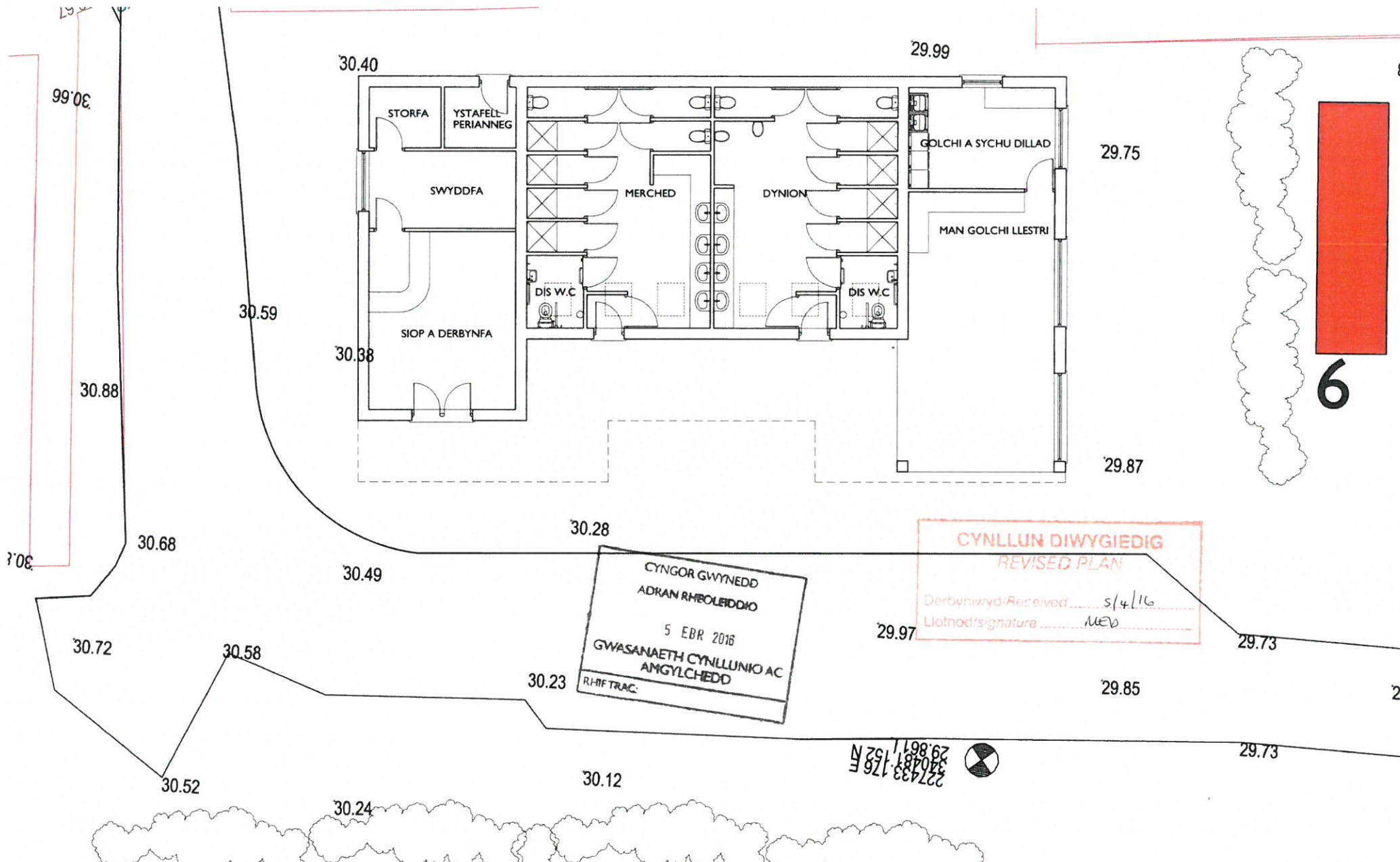
Rhif Dylunad - Drawing No
2304:15:8
 Graddfa - Scale
1:100 @ A3
 Dyddiad - Date
July 2015

russell-hughes cyf
 penseiri/architects

56 Bridge Street,
 Llangefni,
 Ynys Mon
 LL77 7HH

Tel: 01248 722333
 Fax: 01248 750600
 E-mail: info@russellhughes.co.uk

Ffais'r dylunad hwn yn hyswtruant Penseiri Russell-Hughes ac ni
 chaniatáu ei gopïo neu ei argrobyrddu heb ganiatâd
 This drawing is the copyright of Russell-Hughes architects and
 must not be copied or reproduced without permission



CYNGOR GWYNEDD
 ADRAN RHEOLRDDIO
 5 EBR 2016
 GWASANAETH CYNLLUNIO AC
 AMGYLCHEDD
 RHIF TRAC:

CYNLLUN DIWYGIEDIG
 REVISED PLAN
 Derbyniwyd/Received 5/4/16
 Llofnod/signature MEV

Paidwch a chymryd mesurtau graffia oddi ar y dyluniad hwn
 O'r blaen - gofynnwch
 Do not take measurements from this drawing
 If in doubt - ask
 Mae'r dyluniad hwn yn hyspwrnt Penseiri Russell-Hughes ac ni
 chaniateir ei gopïo neu ei atgynhyrchu heb ganiateir
 This drawing is the copyright of Russell-Hughes architects and
 must not be copied or reproduced without permission

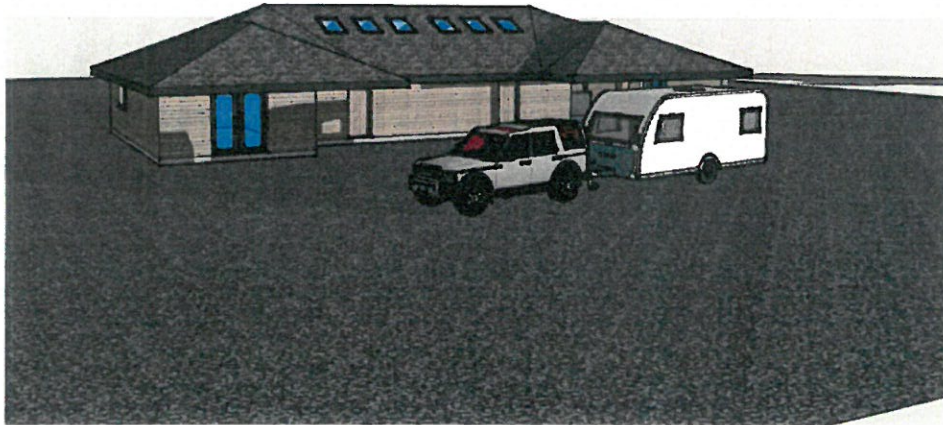
Cynllun - Job
**FFERM PORTHDINLLAEN,
 CARAVAN PARK**
 Dyluniad - Drawing
PROPOSED SHOWER BLOCK FLOOR PLAN

Rheol Dyluniad - Drawing No
2304:15:7a
 Graddfa - Scale
1:100 @ A3
 Dyddiad - Date
Apr 2016

russell-hughes cyf
 penseiri/architects

56 Bridge Street,
 Llangefni,
 Ynys Mon
 LL77 7HH

Tel: 01248 722333
 Fax: 01248 750600
 E-mail: info@russellhughes.co.uk



CYNGOR GWYNEDD
ADRAN RHEOLEIDDIO
5 EBR 2016
GWYBODAETH CYNLLUNIO AC
AMGYLCHEDD
RHEIFYNAC

GWYBODAETH YCHWANEGOL
ADDITIONAL INFORMATION

Derbyniwyd/Received 5/4/16
Llofnod/signature WED

