

- Legend**
- PROPOSED SUBSTATION RED LINE BOUNDARY
  - EXISTING NATIONAL GRID 400 KV OVERHEAD LINE
  - EXISTING SP MANWEB 132 KV OVERHEAD LINE

0	24/03/2017	Environmental Report	JF	JB	JK
Rev	Date	Description	GRS	CHK	APP

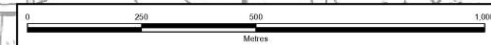


Site: BRYNOCR  
 Scheme Name: BRYNOCR SUBSTATION

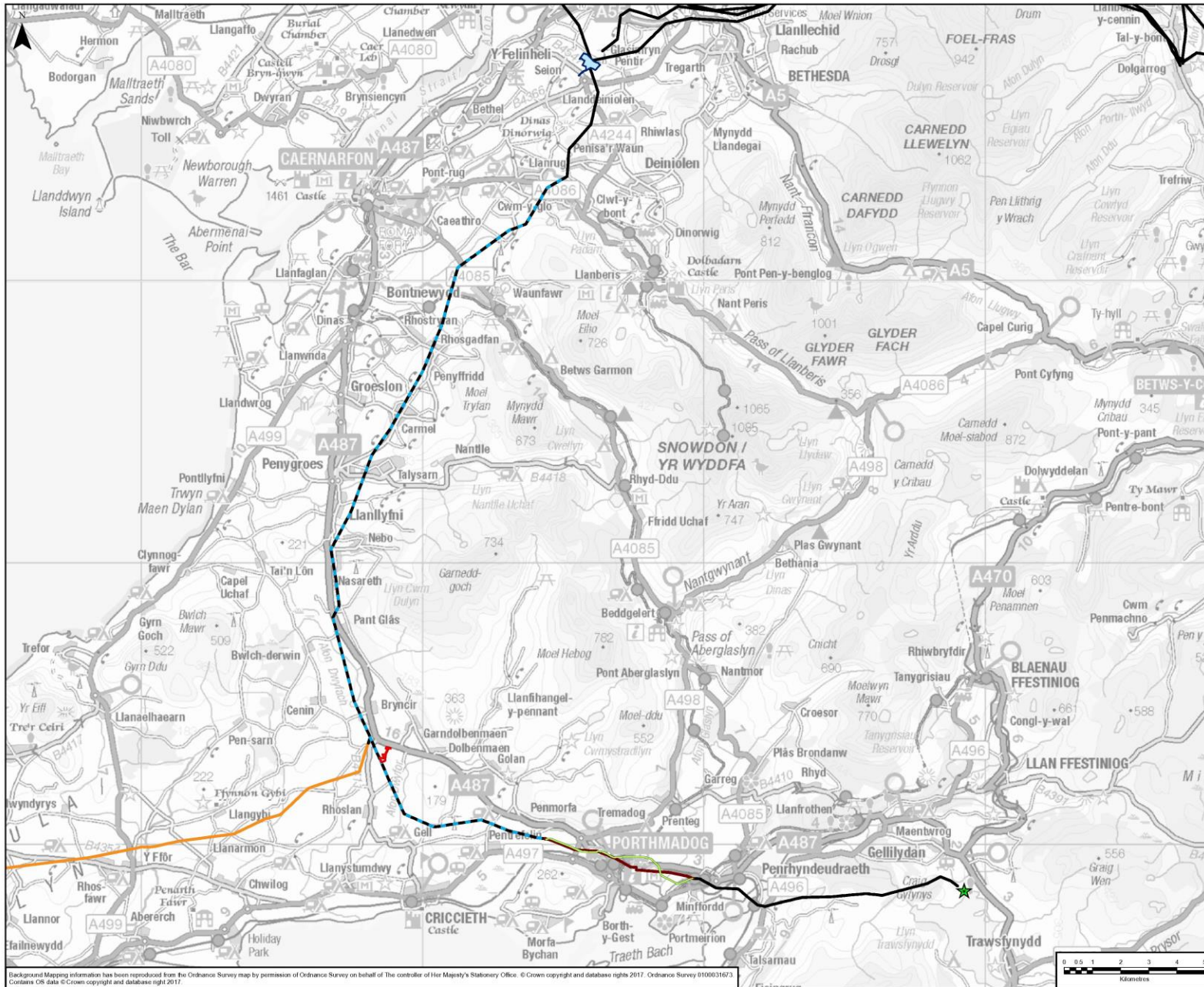
Document Title: FIGURE 1.1 RED LINE BOUNDARY

Created:	Date:	Checked:	Date:	Approved:	Date:
JF	24/03/2017	JB	24/03/2017	JK	24/03/2017
Document Type:	Scale:	Format:	Sheets:	Rev:	
FIGURE 1.1	1:10,000	A3	1 of 1	0	

Background Mapping information has been reproduced from the Ordnance Survey map by permission of Ordnance Survey on behalf of The Controller of Her Majesty's Stationery Office. © Crown copyright and database rights 2017. Ordnance Survey 0100031673. Contains OS data © Crown copyright and database right 2017.

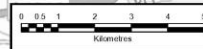






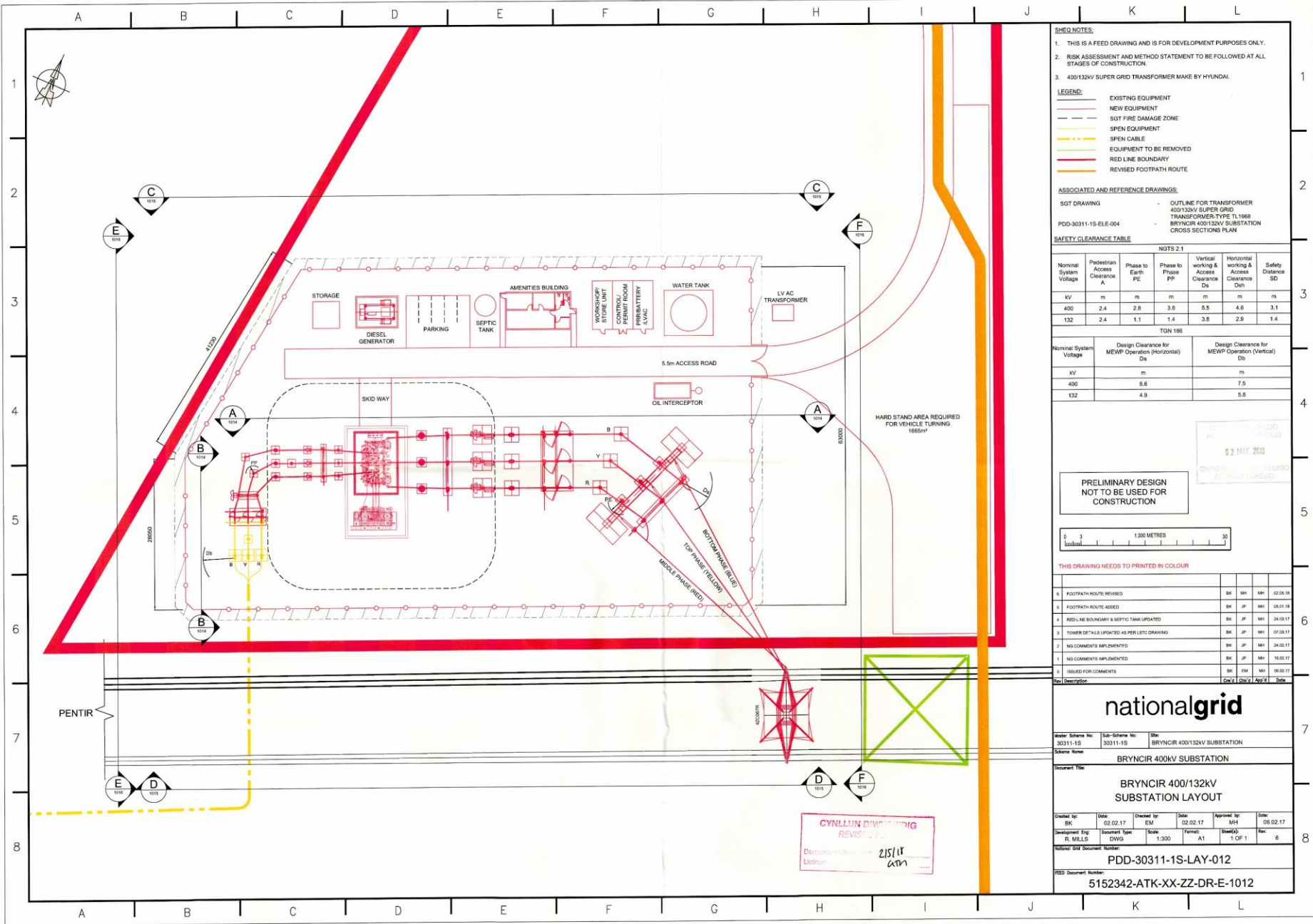
- Legend**
- PROPOSED SUBSTATION RED LINE BOUNDARY
  - ★ TRAWSFYNYDD SUBSTATION
  - EXISTING NATIONAL GRID 400 KV OVERHEAD LINE
  - EXISTING SP MANWEB 132 KV OVERHEAD LINE
  - RECONDUCTORING OF ONE CIRCUIT ON THE EXISTING 420 KV OVERHEAD LINE
  - EXISTING UNDERGROUND CABLE
  - PROPOSED GLASLYN CABLE ROUTE
  - PENTIR SUBSTATION

0	24/03/2017	Environmental Report	JF	JB	JK
Rev	Date	Description	GRS	CHK	APP
<b>nationalgrid</b>					
Site:	BRYNCCIR				
Scheme Name:	BRYNCCIR SUBSTATION				
Document Title:	FIGURE 1.2 WIDER WORKS				
Created:	Date:	Checked:	Date:	Approved:	Date:
JF	24/03/2017	JB	24/03/2017	JK	24/03/2017
Document Type:	Scale:	Format:	Sheets:	Rev:	
FIGURE 1.2	1:125,000	A3	1 of 1	0	



Background Mapping information has been reproduced from the Ordnance Survey map by permission of Ordnance Survey on behalf of the controller of Her Majesty's Stationery Office. © Crown copyright and database rights 2017. Ordnance Survey 0100031673. Contains OS data © Crown copyright and database right 2017.

Document Path: \\lancr1p602\ukmor1p602\1\Propoal3512\North Wales Connection - NIG\B02 Maps\All Disciplines\Wider Works Environmental Report Figures\Brynccir\ALL\_1.2\_WIDER\_WORKS\_R0\_20170324\_JF.mxd



- SHEQ NOTES:**
- THIS IS A FEED DRAWING AND IS FOR DEVELOPMENT PURPOSES ONLY.
  - RISK ASSESSMENT AND METHOD STATEMENT TO BE FOLLOWED AT ALL STAGES OF CONSTRUCTION.
  - 400/132KV SUPER GRID TRANSFORMER MAKE BY HYUNDAI.
- LEGEND:**
- EXISTING EQUIPMENT
  - NEW EQUIPMENT
  - SGT FIRE DAMAGE ZONE
  - SPEN EQUIPMENT
  - SPEN CABLE
  - EQUIPMENT TO BE REMOVED
  - RED LINE BOUNDARY
  - REVISED FOOTPATH ROUTE

**ASSOCIATED AND REFERENCE DRAWINGS:**

SGT DRAWING: OUTLINE FOR TRANSFORMER 400/132KV SUPER GRID TRANSFORMER-TYPE TL1968  
 PDD-30311-1S-ELE-004: BRYNCIR 400/132KV SUBSTATION CROSS SECTIONS PLAN

**SAFETY CLEARANCE TABLE**

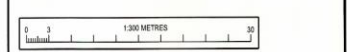
Nominal System Voltage	Pedestrian Access Clearance A	Phase to Earth P/E	Phase to Phase P/P	NGTS 2.1		
				Vertical working & Access Clearance Ds	Horizontal Access Clearance Dsh	Safety Distance SD
400	2.4	2.8	3.6	5.5	4.6	3.1
132	2.4	1.1	1.4	3.8	2.9	1.4

**TGN 196**

Nominal System Voltage	Design Clearance for MEWP Operation (Horizontal) Dsh		Design Clearance for MEWP Operation (Vertical) Dv	
	400	132	400	132
KV	m	m	m	m
400	6.6	7.5		
132	4.8	5.8		

PRELIMINARY DESIGN NOT TO BE USED FOR CONSTRUCTION

02 MAY 2018



**THIS DRAWING NEEDS TO PRINTED IN COLOUR**

Rev	Description	By	Chk	MH	MM	Date
6	FOOTPATH ROUTE REVISED	SK	JP	MM	MM	02.05.18
5	FOOTPATH ROUTE ADDED	SK	JP	MM	MM	08.01.18
4	RED LINE BOUNDARY & SEPTIC TANK UPDATED	SK	JP	MM	MM	24.03.17
3	TOWER DETAILS UPDATED AS PER LETS DRAWING	SK	JP	MM	MM	07.03.17
2	NO COMMENTS IMPLEMENTED	SK	JP	MM	MM	24.02.17
1	NO COMMENTS IMPLEMENTED	SK	JP	MM	MM	16.02.17
0	ISSUED FOR COMMENTS	SK	JP	MM	MM	06.03.17

**nationalgrid**

Water Scheme No: 30311-1S | Sub-Scheme No: 30311-1S | Site: BRYNCIR 400/132KV SUBSTATION

Substation Name: BRYNCIR 400KV SUBSTATION

Document Title: BRYNCIR 400/132KV SUBSTATION LAYOUT

Created by	Date	Checked by	Date	Approved by	Date
SK	02.02.17	EM	02.02.17	MH	06.02.17

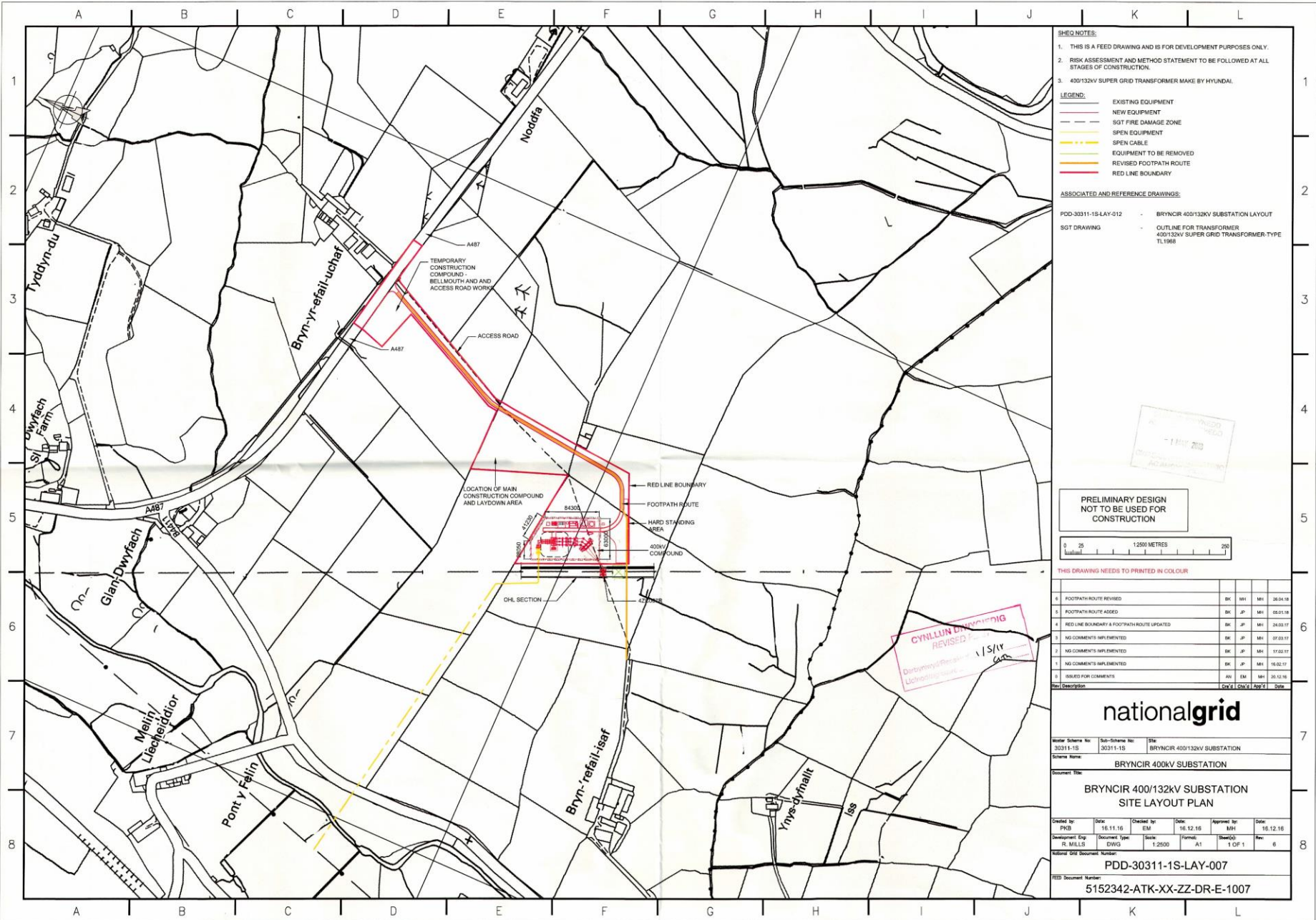
Development Eng: R. MILLS | Document Type: DWG | Scale: 1:300 | Format: A1 | Sheet(s): 1 OF 1 | Rev: 6

Internal ID/Document Number: PDD-30311-1S-LAY-012

RED Document Number: 5152342-ATK-XX-ZZ-DR-E-1012

**CYNNULIN DIMIWRING**  
 REVISIUN  
 Ddiwyddwr: 25/1/17  
 Llofnod: am





- SHEQ NOTES:**
- THIS IS A FEED DRAWING AND IS FOR DEVELOPMENT PURPOSES ONLY.
  - RISK ASSESSMENT AND METHOD STATEMENT TO BE FOLLOWED AT ALL STAGES OF CONSTRUCTION.
  - 400/132KV SUPER GRID TRANSFORMER MAKE BY HYUNDAI.
- LEGEND:**
- EXISTING EQUIPMENT
  - NEW EQUIPMENT
  - SGT FIRE DAMAGE ZONE
  - SPEN EQUIPMENT
  - SPEN CABLE
  - EQUIPMENT TO BE REMOVED
  - REVISED FOOTPATH ROUTE
  - RED LINE BOUNDARY
- ASSOCIATED AND REFERENCE DRAWINGS:**
- PDD-30311-1S-LAY-012 - BRYNycir 400/132KV SUBSTATION LAYOUT
  - SGT DRAWING - OUTLINE FOR TRANSFORMER 400/132KV SUPER GRID TRANSFORMER TYPE TL1968

**PRELIMINARY DESIGN NOT TO BE USED FOR CONSTRUCTION**

0 25 1250 METRES 200

THIS DRAWING NEEDS TO BE PRINTED IN COLOUR

Rev	Description	By	Chk	App'd	Date
6	FOOTPATH ROUTE REVISED	BK	MH	MH	26.04.16
5	FOOTPATH ROUTE ADDED	BK	JP	MH	09.01.16
4	RED LINE BOUNDARY & FOOTPATH ROUTE UPDATED	BK	JP	MH	24.03.17
3	NO COMMENTS IMPLEMENTED	BK	JP	MH	07.03.17
2	NO COMMENTS IMPLEMENTED	BK	JP	MH	17.03.17
1	NO COMMENTS IMPLEMENTED	BK	JP	MH	16.02.17
0	ISSUED FOR COMMENTS	AW	EM	MH	20.12.16

Rev Description By Chk App'd Date

**nationalgrid**

Master Scheme No: 30311-1S Sub-Scheme No: 30311-1S Site: BRYNycir 400/132KV SUBSTATION

Scheme Name: BRYNycir 400KV SUBSTATION

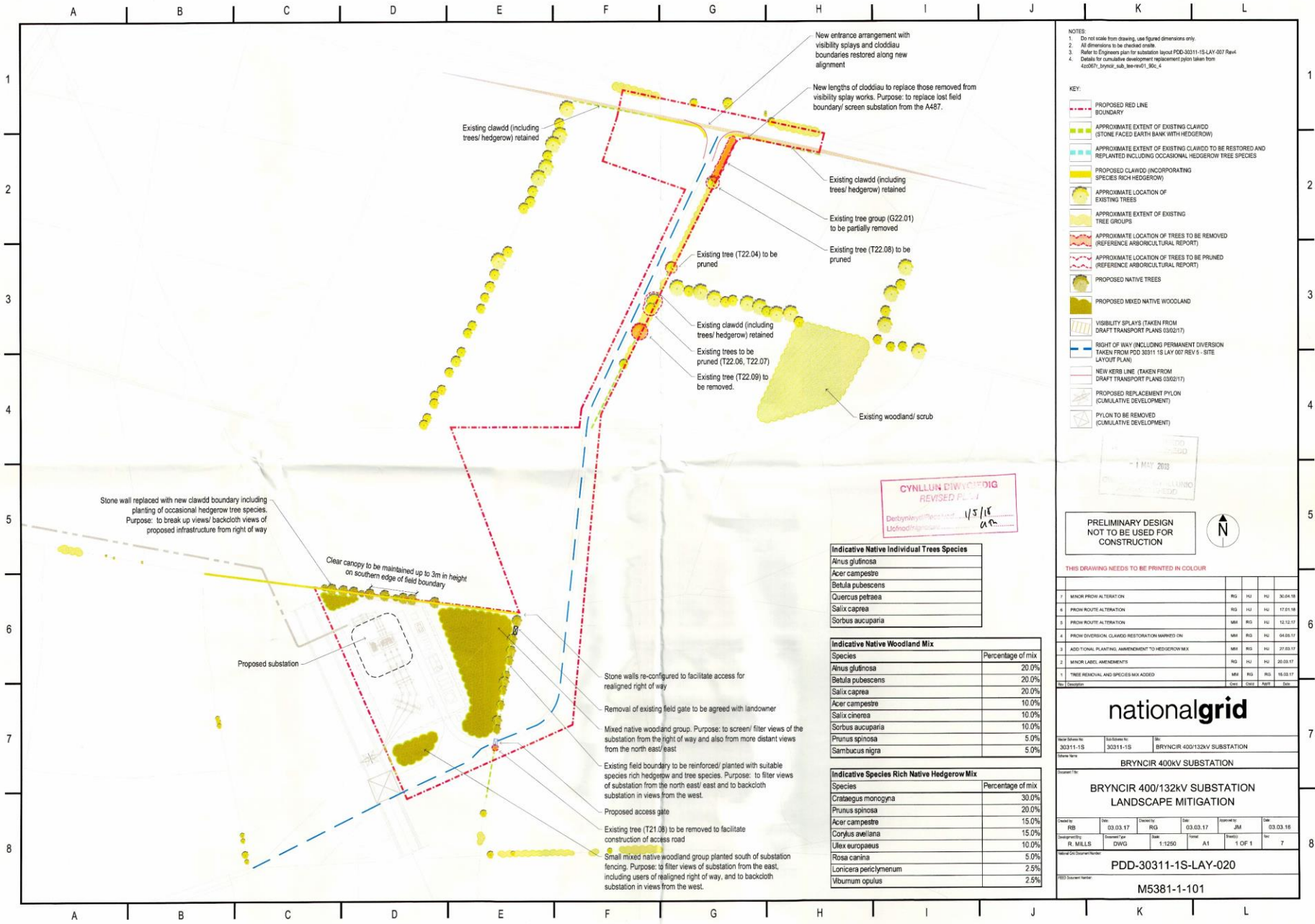
Project Title: BRYNycir 400/132KV SUBSTATION SITE LAYOUT PLAN

Created by	Date	Checked by	Date	Approved by	Date
PKB	16.11.16	EM	16.12.16	MH	16.12.16

Development Eng: R. WILLES DWG: DWG Scale: 1:2500 Format: A1 Sheet(s): 1 OF 1 Rev: 6

National Grid Document Number: PDD-30311-1S-LAY-007

ESD Document Number: 5152342-ATK-XX-ZZ-DR-E-1007



**NOTES:**

- Do not scale from drawing, use figured dimensions only.
- All dimensions to be checked onsite.
- Refer to Engineers plan for substation layout PDD-30311-1S-LAY-007 Revd.
- Details for cumulative development replacement python taken from 4200871\_bryncir\_s&B\_bre-rev01\_90c\_4

**KEY:**

- PROPOSED RED LINE BOUNDARY
- APPROXIMATE EXTENT OF EXISTING CLADDW (STONE FACED EARTH BANK WITH HEDGEROW)
- APPROXIMATE EXTENT OF EXISTING CLADDW TO BE RESTORED AND REPLANTED INCLUDING OCCASIONAL HEDGEROW TREE SPECIES
- PROPOSED CLADDW (INCORPORATING SPECIES RICH HEDGEROW)
- APPROXIMATE LOCATION OF EXISTING TREES
- APPROXIMATE EXTENT OF EXISTING TREE GROUPS
- APPROXIMATE LOCATION OF TREES TO BE REMOVED (REFERENCE ARBORCULTURAL REPORT)
- APPROXIMATE LOCATION OF TREES TO BE PRUNED (REFERENCE ARBORCULTURAL REPORT)
- PROPOSED NATIVE TREES
- PROPOSED MIXED NATIVE WOODLAND
- VISIBILITY SPLAYS (TAKEN FROM DRAFT TRANSPORT PLANS 03/02/17)
- RIGHT OF WAY (INCLUDING PERMANENT DIVERSION TAKEN FROM PDD 30311 1S LAY 007 REV 5 - SITE LAYOUT PLAN)
- NEW KERB LINE (TAKEN FROM DRAFT TRANSPORT PLANS 03/02/17)
- PROPOSED REPLACEMENT PYLON (CUMULATIVE DEVELOPMENT)
- PYLON TO BE REMOVED (CUMULATIVE DEVELOPMENT)

**CYNLLUN DIWYCHODIG**  
 REVISÉD PLAN  
 Derbyshire/Peeredon 1/5/18  
 Llofnoddyrwyddwr: [Signature]

**Indicative Native Individual Trees Species**

Alnus glutinosa
Acer campestre
Betula pubescens
Quercus petraea
Salix caprea
Sorbus aucuparia

**Indicative Native Woodland Mix**

Species	Percentage of mix
Alnus glutinosa	20.0%
Betula pubescens	20.0%
Salix caprea	20.0%
Acer campestre	10.0%
Salix cinerea	10.0%
Sorbus aucuparia	10.0%
Prunus spinosa	5.0%
Sambucus nigra	5.0%

**Indicative Species Rich Native Hedgerow Mix**

Species	Percentage of mix
Crataegus monogyna	30.0%
Prunus spinosa	20.0%
Acer campestre	15.0%
Cornus avellana	15.0%
Ulex europaeus	10.0%
Rosa canina	5.0%
Lonicera periclymenum	2.5%
Viburnum opulus	2.5%

PRELIMINARY DESIGN  
 NOT TO BE USED FOR  
 CONSTRUCTION

THIS DRAWING NEEDS TO BE PRINTED IN COLOUR

Rev	Description	Issued	By	Check	Date
1	MINOR PROW ALTERATION	RG	HJ	HJ	30.04.18
2	PROW ROUTE ALTERATION	RG	HJ	HJ	17.01.18
3	PROW ROUTE ALTERATION	MM	RG	HJ	12.12.15
4	PROW DIVERSION, CLADDW RESTORATION MARKED ON	MM	RG	HJ	08.09.17
5	ADD TOTAL PLANTING AMENDMENT TO HEDGEROW MIX	MM	RG	HJ	27.03.17
6	MINOR LABEL AMENDMENTS	RG	HJ	HJ	20.03.17
7	TREE REMOVAL AND SPECIES MIX ADDED	MM	RG	HJ	16.03.17

30311-1S	30311-1S	BYRNCIR 400/132KV SUBSTATION
BRYNCCIR 400kV SUBSTATION		
BRYNCCIR 400/132KV SUBSTATION LANDSCAPE MITIGATION		
Drawn by:	RG	03.03.17
Checked by:	RG	03.03.17
Design by:	RG	03.03.17
Drawn by:	RG	03.03.17
Checked by:	RG	03.03.17
Design by:	RG	03.03.17

**nationalgrid**

30311-1S | 30311-1S | BYRNCIR 400/132KV SUBSTATION

BRYNCCIR 400kV SUBSTATION

BRYNCCIR 400/132KV SUBSTATION  
LANDSCAPE MITIGATION

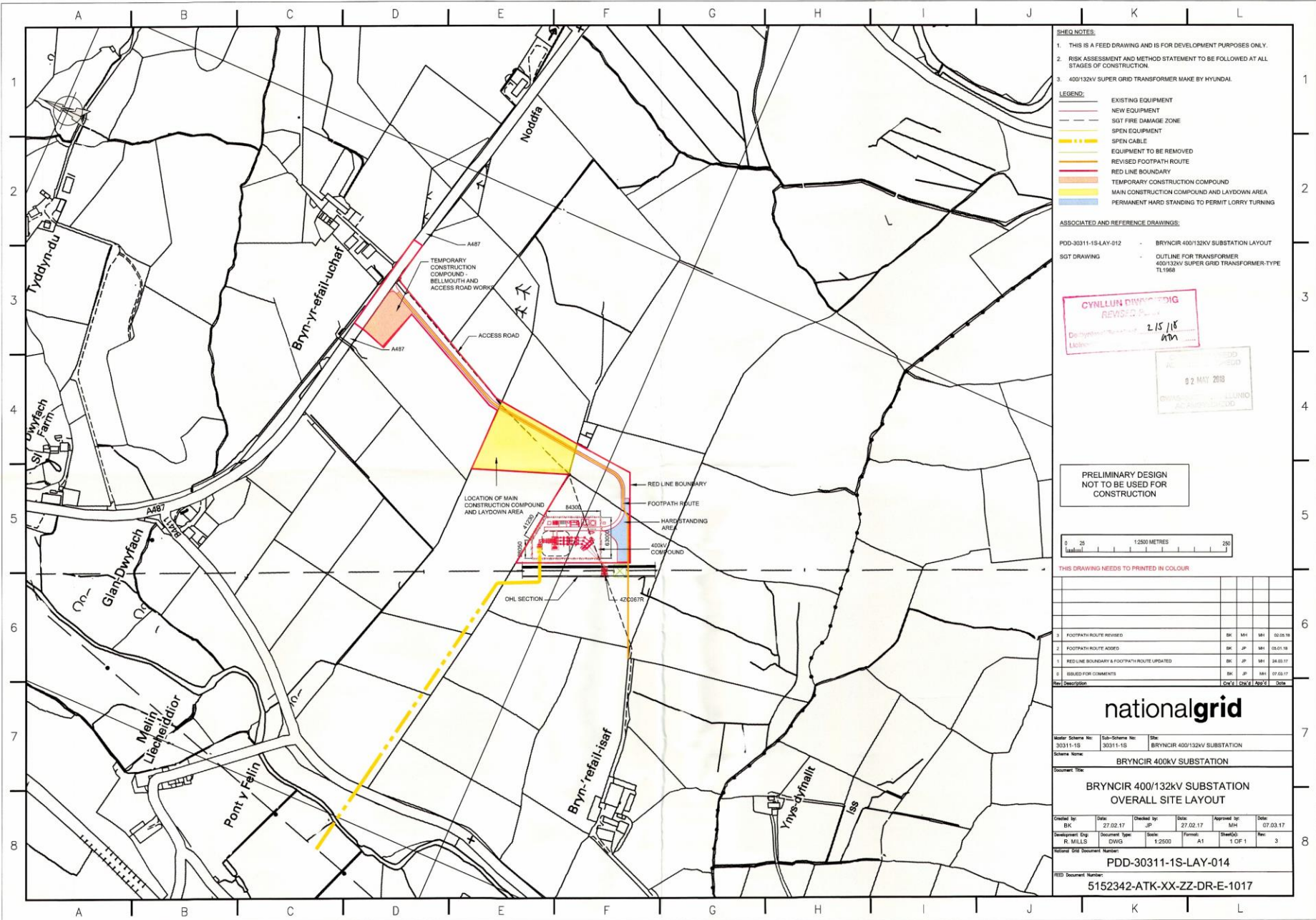
Drawn by: RG | Date: 03.03.17 | Checked by: RG | Date: 03.03.17 | Design by: RG | Date: 03.03.17

Drawn by: R. MILLS | Date: DWG | Scale: 1:2500 | Sheet: A1 | Total: 1 OF 1 | Date: 03.03.16

Project Number: PDD-30311-1S-LAY-020

Sheet Number: M5381-1-101





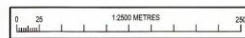
- SHEET NOTES:**
1. THIS IS A FEED DRAWING AND IS FOR DEVELOPMENT PURPOSES ONLY.
  2. RISK ASSESSMENT AND METHOD STATEMENT TO BE FOLLOWED AT ALL STAGES OF CONSTRUCTION.
  3. 400/132KV SUPER GRID TRANSFORMER MAKE BY HYUNDAI.
- LEGEND:**
- EXISTING EQUIPMENT
  - NEW EQUIPMENT
  - SGT FIRE DAMAGE ZONE
  - SPEN EQUIPMENT
  - SPEN CABLE
  - EQUIPMENT TO BE REMOVED
  - REVISED FOOTPATH ROUTE
  - RED LINE BOUNDARY
  - TEMPORARY CONSTRUCTION COMPOUND
  - MAIN CONSTRUCTION COMPOUND AND LAYDOWN AREA
  - PERMANENT HARD STANDING TO PERMIT LORRY TURNING

**ASSOCIATED AND REFERENCE DRAWINGS:**

PDD-30311-1S-LAY-012      BRYNycir 400/132KV SUBSTATION LAYOUT  
 SGT DRAWING              OUTLINE FOR TRANSFORMER 400/132KV SUPER GRID TRANSFORMER-TYPE TL1968



**PRELIMINARY DESIGN NOT TO BE USED FOR CONSTRUCTION**



THIS DRAWING NEEDS TO BE PRINTED IN COLOUR

Rev	Description	Rev	CHK'd	App'd	Date
3	FOOTPATH ROUTE REVISED	BK	MH	MH	02.03.18
2	FOOTPATH ROUTE ADDED	BK	JP	MH	05.01.18
1	RED LINE BOUNDARY & FOOTPATH ROUTE UPDATED	BK	JP	MH	24.01.17
0	ISSUED FOR COMMENTS	BK	JP	MH	07.03.17

**nationalgrid**

Master Scheme No: 30311-1S      Sub-Scheme No: 30311-1S      Site: BRYNycir 400/132KV SUBSTATION

Scheme Name: **BRYNycir 400KV SUBSTATION**

Document Title: **BRYNycir 400/132KV SUBSTATION OVERALL SITE LAYOUT**

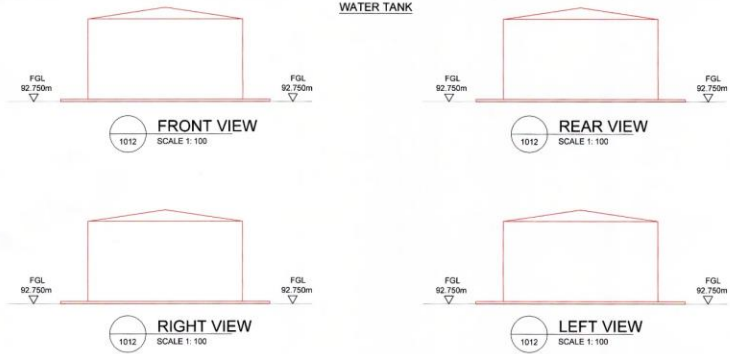
Created by: BK	Date: 27.02.17	Checked by: JP	Date: 27.02.17	Approved by: MH	Date: 07.03.17
Development Org: R. MILLS	DWG	Document Type: 1:2500	Scale: A1	Sheet(s): 1 OF 1	Rev: 3

Master SGT Document Number: PDD-30311-1S-LAY-014

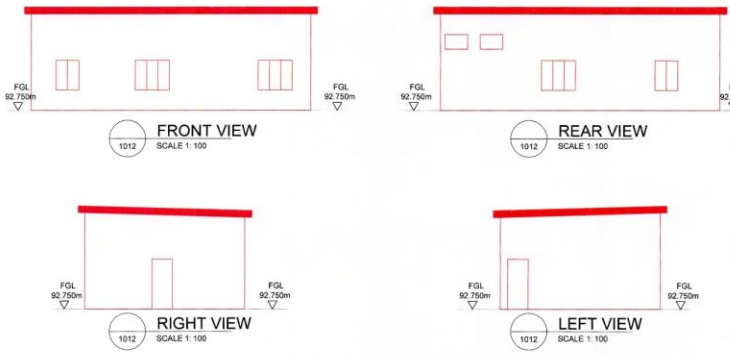
FEED Document Number: 5152342-ATK-XX-ZZ-DR-E-1017

**GWYBODAETH YCHWANEGOL**  
**ADDITIONAL INFORMATION**  
 Derbyniwyd/Received 30/1/17  
 Wladod/signature GTA

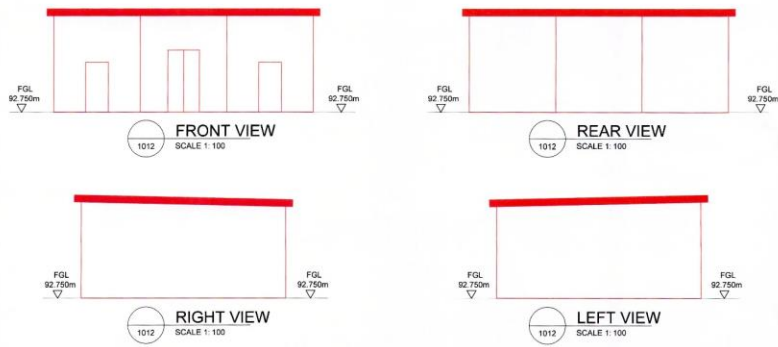
**WATER TANK**



**AMENITIES BUILDING**



**WORKSHOP/ STORES/ CONTROL ROOM / BATTERY**

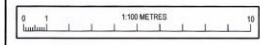


- SHEQ NOTES:**
1. THIS IS A FEED DRAWING AND IS FOR DEVELOPMENT PURPOSES ONLY.
  2. RISK ASSESSMENT AND METHOD STATEMENT TO BE FOLLOWED AT ALL STAGES OF CONSTRUCTION.

**LEGEND:**  
 FGL NEW EQUIPMENT  
 FINISHED GROUND LEVEL

CYNGOR GWYBODAETH  
 ADRIAN ABOLBODD  
 30 AWST 2017  
 GWYBODAETH CYLLUNIO AC  
 AMGYLCHEDD  
 TRIPTRAC

**PRELIMINARY DESIGN  
 NOT TO BE USED FOR  
 CONSTRUCTION**



THIS DRAWING NEEDS TO BE PRINTED IN COLOUR

Rev	Description	By	App'd	Date
2	ADDITIONAL ELEVATIONS ADDED	BK	JP	20.01.17
1	FGL ADDED	BK	JP	19.01.17
0	ISSUED FOR COMMENTS	PKB	EM	20.01.17

**nationalgrid**

Master Scheme No: 30311-1S Sub-Scheme No: 30311-1S Site: BRYNCIR 400/132KV SUBSTATION  
 Scheme Name: BRYNCIR 400KV SUBSTATION  
 Document Title: BRYNCIR 400/132KV SUBSTATION AMENITIES, CONTROL ROOM AND WATER TANK ELEVATIONS

Checked by: PKB	Date: 19.01.17	Checked by: EM	Date: 19.01.17	Approved by: MH	Date: 20.01.17
Development Eng: R. MILLS	Document Type: DWG	Scale: 1:100	Format: A1	Sheet(s): 1 OF 1	Rev: 2

Revised SWP Document Number: PDD-30311-1S-ELE-003  
 FEED Document Number: 5152342-ATK-XX-ZZ-DR-E-1009

A B C D E F G H I J K L

1

2

3

4

5

6

7

8

**ABBREVIATIONS**

- CB - CIRCUIT BREAKER
- CT - CURRENT TRANSFORMER
- CVT - CAPACITIVE VOLTAGE TRANSFORMER
- DS 1E - DISCONNECTING SWITCH WITH ONE EARTH SWITCH
- DS 2E - DISCONNECTING SWITCH WITH TWO EARTH SWITCH
- DG - DIESEL GENERATOR
- ES - EARTH SWITCH
- FGL - FINISHED GROUND LEVEL
- PI - POST INSULATOR
- SA - SURGE ARRESTOR
- SGT - SUPER GRID TRANSFORMER

- SHEQ NOTES:**
1. THIS IS A FEED DRAWING AND IS FOR DEVELOPMENT PURPOSES ONLY.
  2. RISK ASSESSMENT AND METHOD STATEMENT TO BE FOLLOWED AT ALL STAGES OF CONSTRUCTION.
  3. 400/132kV SUPER GRID TRANSFORMER MAKE BY HYUNDAI.
- LEGEND:**
- EXISTING EQUIPMENT
  - NEW EQUIPMENT
  - SGT FIRE DAMAGE ZONE
  - SPEN CABLE
  - EQUIPMENT TO BE REMOVED

- ASSOCIATED AND REFERENCE DRAWINGS:**
- SGT DRAWING - OUTLINE FOR TRANSFORMER 400/132kV SUPER GRID TRANSFORMER TYPE TL1988
  - PDD-30311-1S-LAY-012 - BRYNCIR 400/132kV SUBSTATION LAYOUT
- SAFETY CLEARANCE TABLE**

**NOTES 2.1**

Nominal System Voltage	Pedestrian Access Clearance A	Phase to Earth PE	Phase to Phase PP	Vertical working & Access Clearance Dv	Horizontal working & Access Clearance Dh	Safety Distance SD
kV	m	m	m	m	m	m
400	2.4	2.6	3.6	5.5	4.6	3.1
132	2.4	1.1	1.4	3.8	2.9	1.4

**TGN 186**

Nominal System Voltage	Design Clearance for MEWP Operation (Horizontal) Da	Design Clearance for MEWP Operation (Vertical) Dv
kV	m	m
400	6.6	7.5
132	4.9	5.8

**PRELIMINARY DESIGN  
NOT TO BE USED FOR  
CONSTRUCTION**

THIS DRAWING NEEDS TO PRINTED IN COLOUR

Rev	Description	By	App'd	Date
1	QUANTITY HEIGHT MODIFIED	BK	JP	15.03.11
2	ISSUED FOR COMMENTS	BK	JP	02.03.11

**nationalgrid**

Water Scheme No: 30311-1S | Sub-Scheme No: 30311-1S | Site: BRYNCIR 400/132kV SUBSTATION

Scheme Name: **BRYNCIR 400kV SUBSTATION**

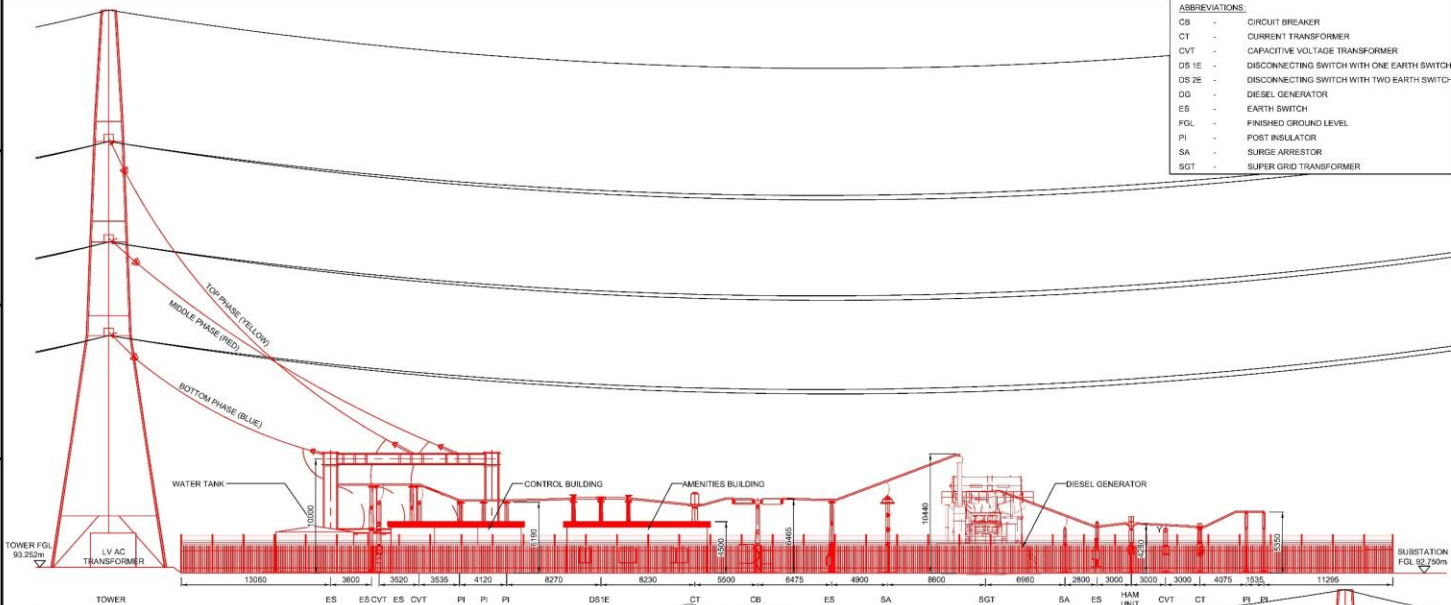
Document Title: **BRYNCIR 400/132kV SUBSTATION ELEVATION**

Created by	Date	Checked by	Date	Approved by	Date
BK	29.02.17	JP	29.02.17	MH	02.03.17

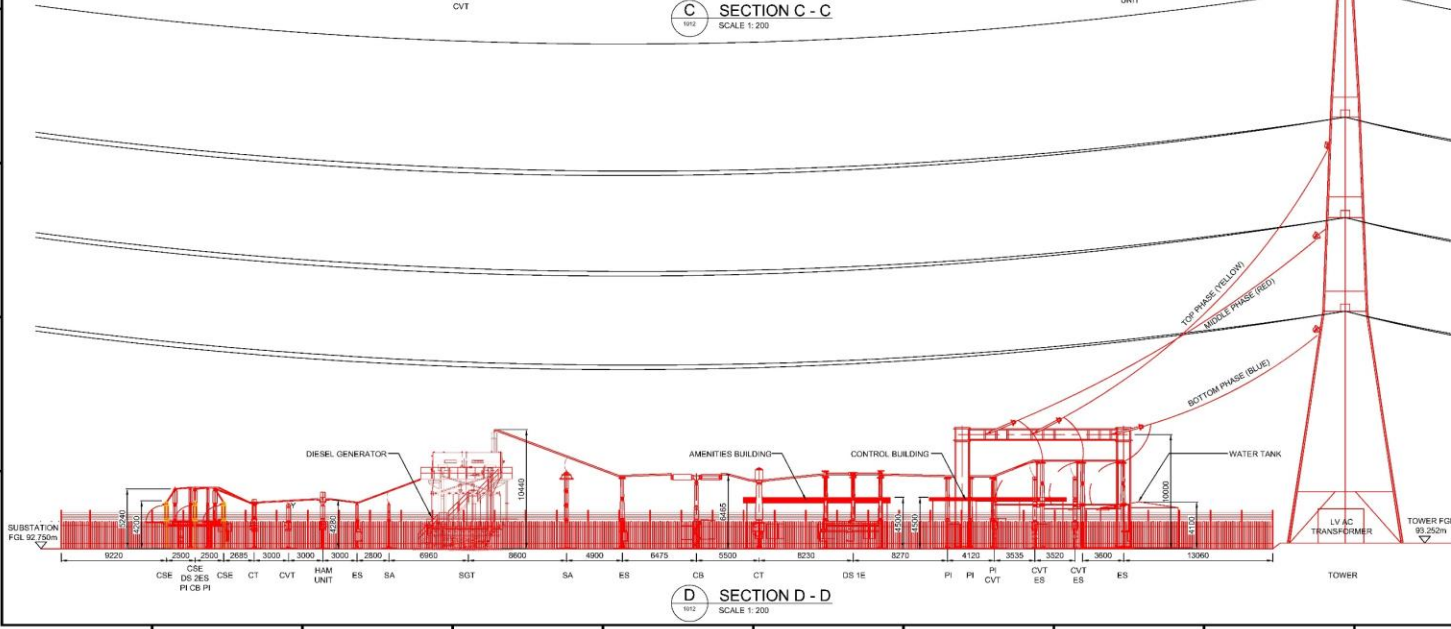
Development: G | Document Type: DWG | Scale: 1:200 | Format: A1 | Sheet: 1 OF 1 | Rev: 1

National Grid Document Number: **PDD-30311-1S-ELE-005**

FEED Document Number: **5152342-ATK-XX-ZZ-DR-E-1015**



**C SECTION C - C**  
SCALE 1: 200



**D SECTION D - D**  
SCALE 1: 200

A B C D E F G H I J K L



A B C D E F G H I J K L

1

2

3

4

5

6

7

8

**ABBREVIATIONS:**

- CB - CIRCUIT BREAKER
- CT - CURRENT TRANSFORMER
- CVT - CAPACITIVE VOLTAGE TRANSFORMER
- DS 1E - DISCONNECTING SWITCH WITH ONE EARTH SWITCH
- DS 2E - DISCONNECTING SWITCH WITH TWO EARTH SWITCH
- DG - DIESEL GENERATOR
- ES - EARTH SWITCH
- FGL - FINISHED GROUND LEVEL
- PI - POST INSULATOR
- SA - SURGE ARRESTOR
- SGT - SUPER GRID TRANSFORMER

**SH-EG NOTES:**

1. THIS IS A FEED DRAWING AND IS FOR DEVELOPMENT PURPOSES ONLY.
2. RISK ASSESSMENT AND METHOD STATEMENT TO BE FOLLOWED AT ALL STAGES OF CONSTRUCTION.
3. 400/132kV SUPER GRID TRANSFORMER MAKE BY HYUNDAI.

**LEGEND:**

- EXISTING EQUIPMENT
- NEW EQUIPMENT
- SGT FIRE DAMAGE ZONE
- SPEN EQUIPMENT
- SPEN CABLE
- EQUIPMENT TO BE REMOVED

**ASSOCIATED AND REFERENCE DRAWINGS:**

- SGT DRAWING - OUTLINE FOR TRANSFORMER
- 400/132kV SUPER GRID TRANSFORMER TYPE TL1988
- POD-30311-1S-LAY-012 - BRYNCIR 400/132kV SUBSTATION LAYOUT

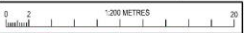
**SAFETY CLEARANCE TABLE**

NOTS 2.1						
Nominal System Voltage	Pedestrian Access Clearance A	Phase to Earth PE	Phase to Phase PP	Vertical working & Access Clearance Da	Horizontal working & Access Clearance Dsh	Safety Distance SD
kV	m	m	m	m	m	m
400	2.4	2.8	3.6	5.5	4.6	3.1
132	2.4	1.1	1.4	3.8	2.9	1.4

TGN 186		
Nominal System Voltage	Design Clearance for MEWP Operation (Horizontal) Da	Design Clearance for MEWP Operation (Vertical) Ds
kV	m	m
400	6.6	7.5
132	4.9	5.8

PRELIMINARY DESIGN  
NOT TO BE USED FOR  
CONSTRUCTION



THIS DRAWING NEEDS TO PRINTED IN COLOUR

Rev	Description	By	App'd	Date
1	GANTRY HEIGHT MODIFIED	BK	JP	15.03.17
2	ISSUED FOR COMMENTS	RK	JP	03.03.17
3	REVISED	CHG	APP'D	DATE

**nationalgrid**

Water Scheme No: 30311-1S | Sub-Scheme No: 30311-1S | Site: BRYNCIR 400/132kV SUBSTATION

Scheme Name: BRYNCIR 400kV SUBSTATION

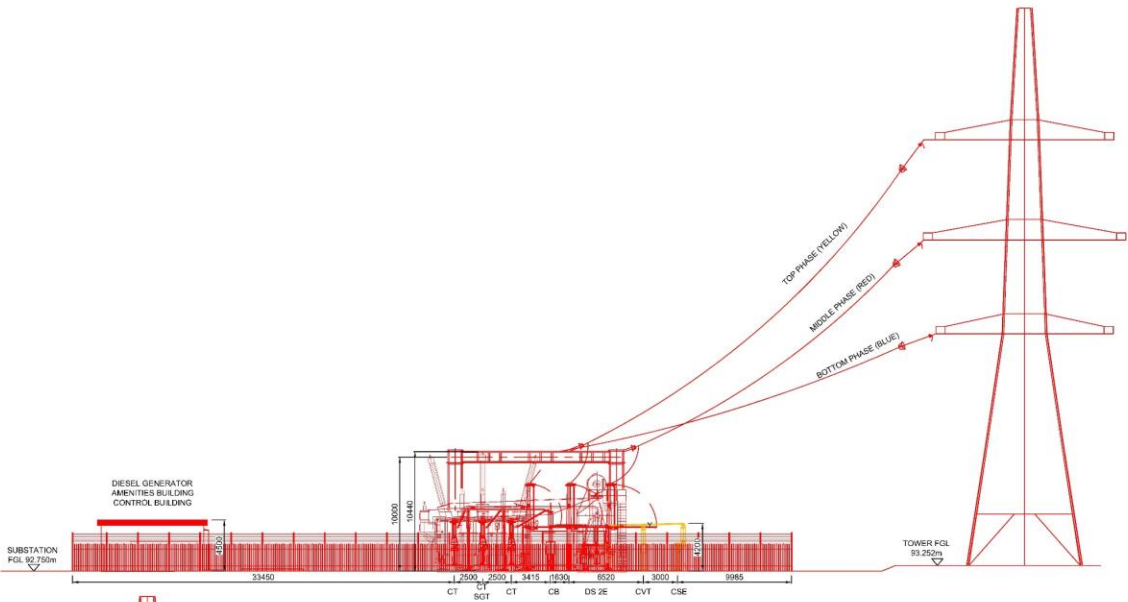
Document Title: BRYNCIR 400/132kV SUBSTATION ELEVATION

Created by: BK | Date: 29.02.17 | Checked by: BK | Date: 29.02.17 | Approved by: MH | Date: 02.03.17

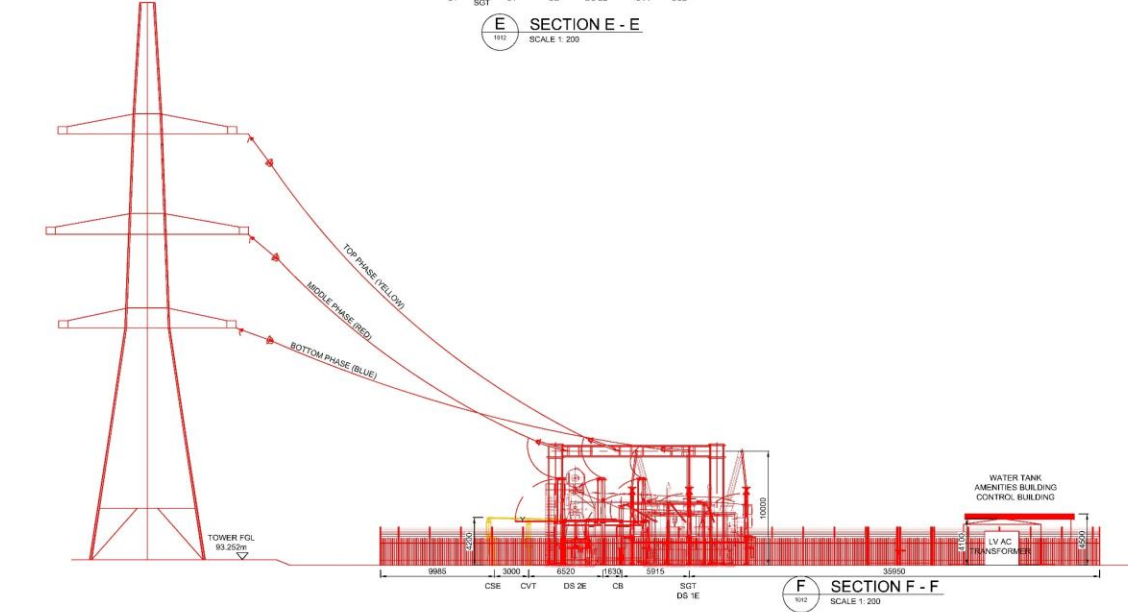
Development Eng: R. MILLES | Document Type: DWG | Scale: 1:200 | Format: A1 | Sheet: 1 OF 1 | Rev: 1

National Grid Document Number: PDD-30311-1S-ELE-006

FEED Document Number: 5152342-ATK-XX-ZZ-DR-E-1016

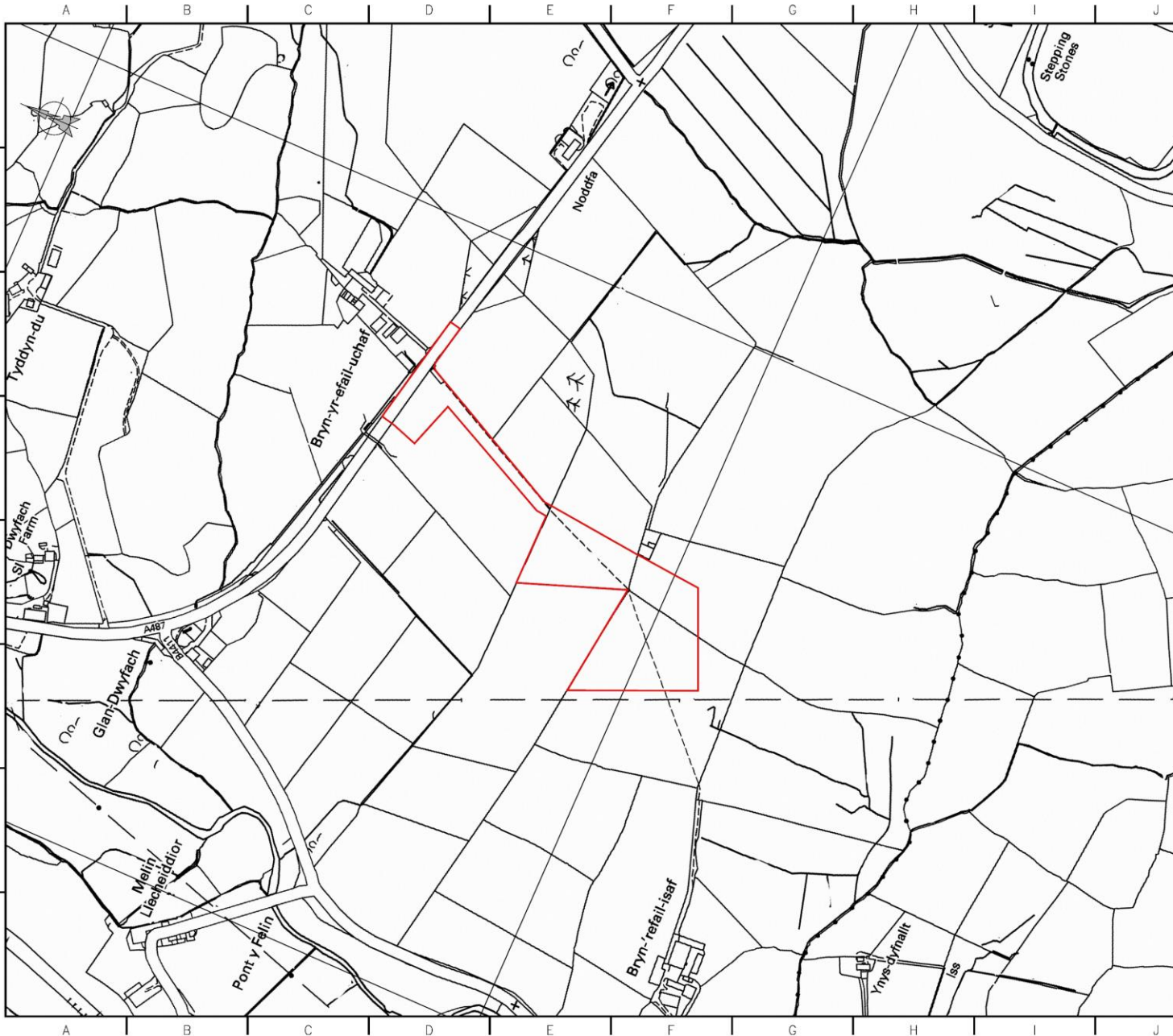


**E SECTION E - E**  
SCALE 1:200



**F SECTION F - F**  
SCALE 1:200

A B C D E F G H I J K L



**SHEET NOTES:**

1. THIS IS A FEED DRAWING AND IS FOR DEVELOPMENT PURPOSES ONLY.
2. RISK ASSESSMENT AND METHOD STATEMENT TO BE FOLLOWED AT ALL STAGES OF CONSTRUCTION.

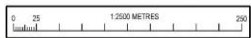
**LEGEND:**

— RED LINE BOUNDARY

**ASSOCIATED AND REFERENCE DRAWINGS:**

PDD-30311-1S-LAY-012      BRYNCIR 400/132KV SUBSTATION LAYOUT

PRELIMINARY DESIGN  
NOT TO BE USED FOR  
CONSTRUCTION



Rev	Description	By	App'd	Date
1	RED LINE BOUNDARY UPDATED	JK	JP	24.03.17
2	ISSUED FOR COMMENTS	JK	JP	07.03.17
3		JK	JP	07.03.17

**nationalgrid**

Master Scheme No: 30311-1S      Sub-Scheme No: 30311-1S      Site: BRYNCIR 400/132KV SUBSTATION

Scheme Name: BRYNCIR 400KV SUBSTATION

Document Title: BRYNCIR 400/132KV SUBSTATION LOCATION PLAN

Created by:	Date:	Checked by:	Date:	Approved by:	Date:
JK	07.03.17	JP	07.03.17	MH	07.03.17

Developed by: R. M.L.S.      Document Type: DWG      Scale: 1:2500      Format: A1      Sheet(s): 1 OF 1      Rev: 1

National Grid Document Number: PDD-30311-1S-LAY-017

FEED Document Number: 5152342-ATK-XX-ZZ-DR-E-1020



