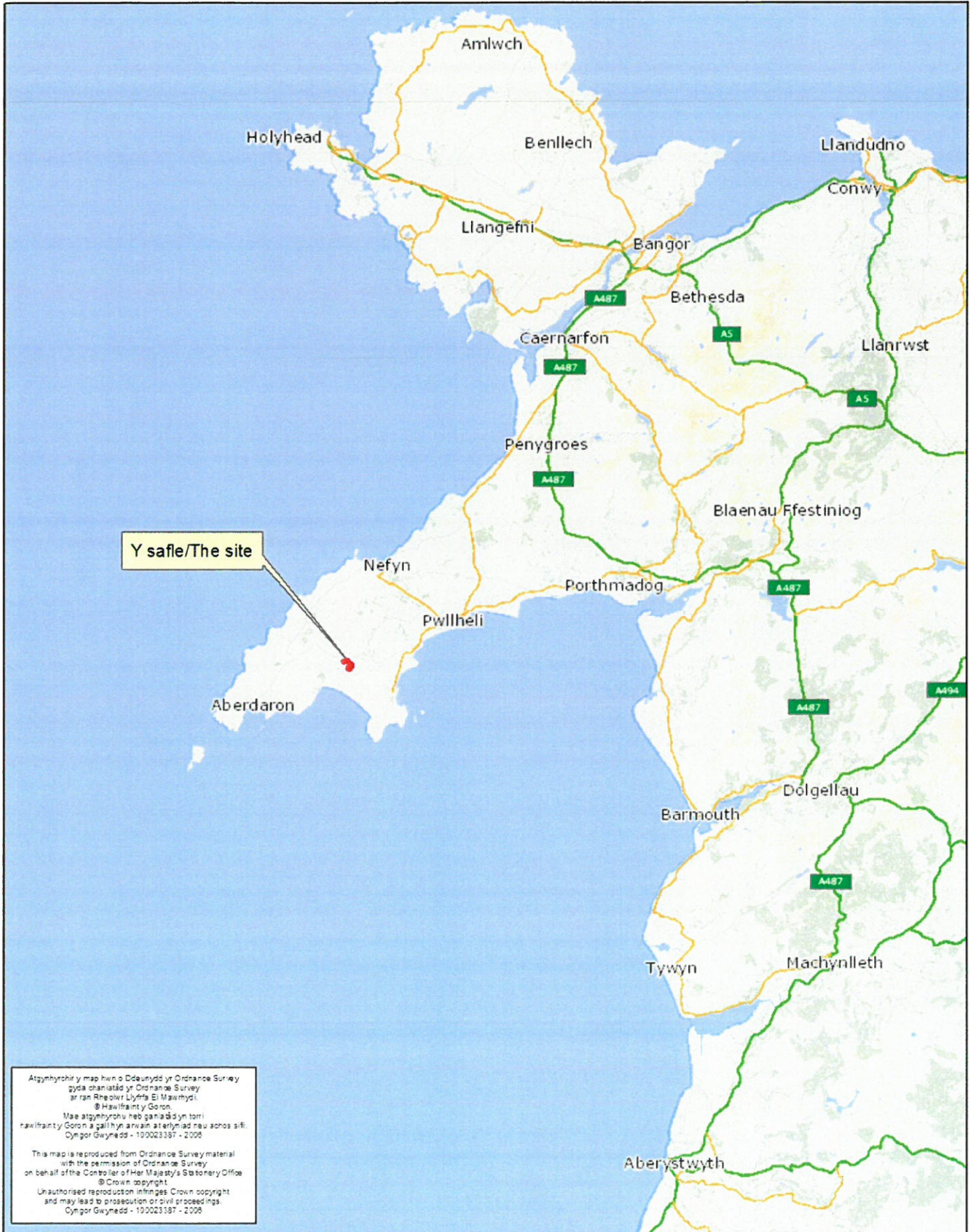
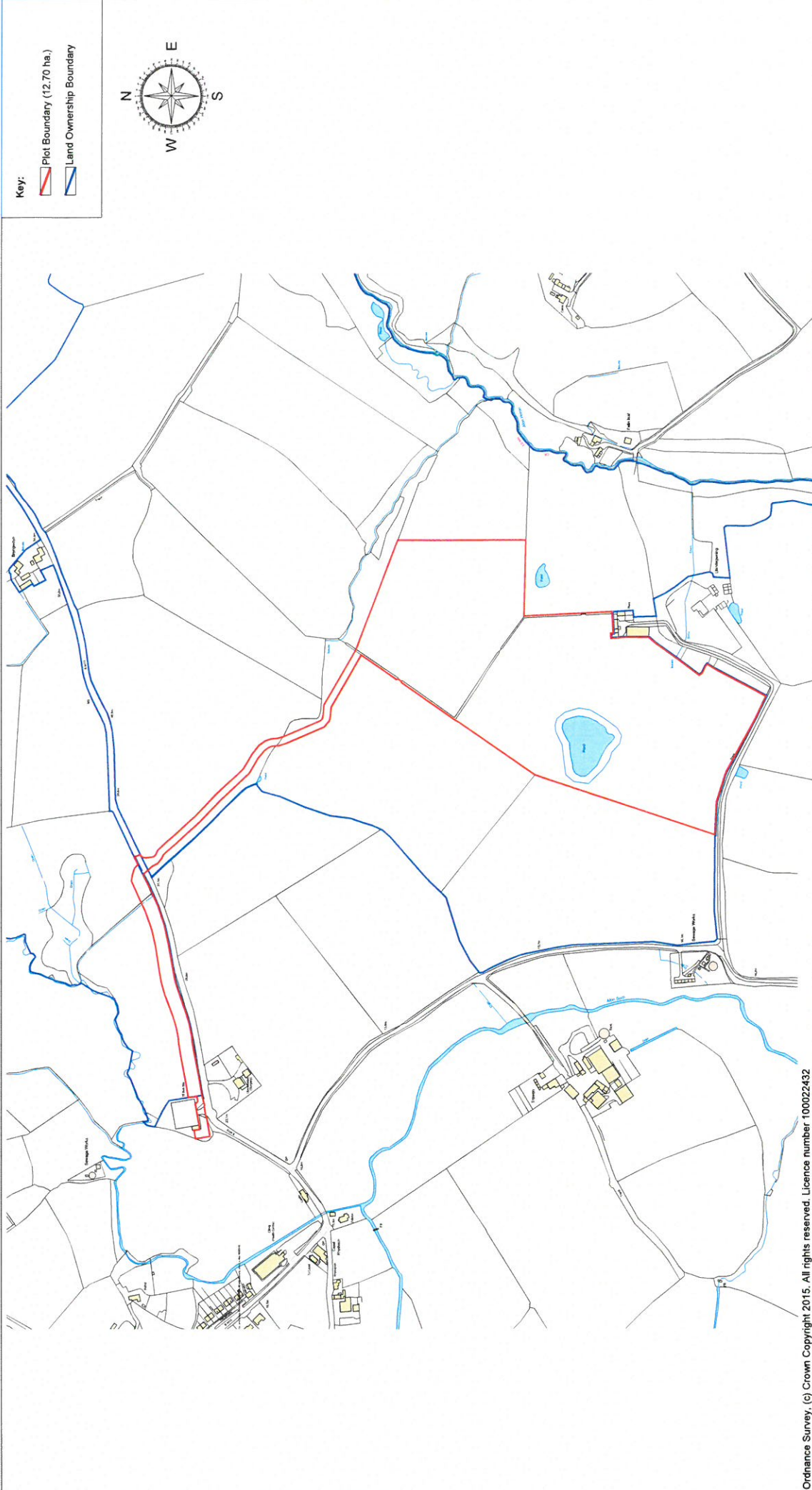


Rhif y Cais / Application Number : C15/0793/32/LL

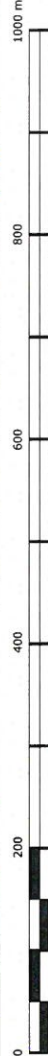
Cynllun lleoliad ar gyfer adnabod y safle yn unig. Dim i raddfa.
Location Plan for identification purposes only. Not to scale.





Ordnance Survey, (c) Crown Copyright 2015. All rights reserved. Licence number 100022432

Key:
 Plot Boundary (12.70 ha.)
 Land Ownership Boundary



Plan description: Botwnnog Solar Farm Site Location Plan		Drawing Reference: Botwnnog Solar Farm_PO1_SLP_RevB	
Date:	Editor:	Revision:	Checked:
20/08/2015	M.L.C		
20/11/2015	M.L.C.		
Date: 20/08/2015		Scale: 1:2500@A1	
Coordinates: longitude: -04.5710 latitude: 52.8460 Reference drawings:			
Site: Botwnnog Solar Farm Land south-east of Botwnnog Pwllheli, Gwynedd LL538DP			
BELECTRIC® Thorney Weir House, Thorney Mill Lane, Iwer, Buckinghamshire, SL0 9AQ Tel: +44 (0) 1895 452 640 Web: www.belectric.co.uk			

Variations in design can occur to site conditions. This drawing may not be reproduced or be made available to third persons or competing companies without permissions. The reproduction, distribution and utilization of this document as well as the communication of its contents without explicit authorization is prohibited. Offenders will be held liable and can be fined.

Site Plan

Botwnnog Solar Farm

Coordinates 52.8460° N 04.5710° W
 Country - United Kingdom
 Region / Province - Gwynedd
 Municipality - Botwnnog

Key

	Temporary Construction Compound		Gates
	DNO Access and O&M Access Track and Hard Standing Area		Temporary Construction Access Road
	Existing Hedge		Proposed Cable Route
	Electric overhead line		6.643m CCTV Pole (3no.)
	Meter Box (Close to DNO Transfer Station)		Swales
	ComBox, FoBox & Antenna		Heavy Vehicle Crossing Area
	PADCON monitoring camera		RDC Ground Sensors (37 no.)
	Proposed Hedgerow		Weather sensors
	Master Nodes (4 no.)		

Project Data

- Plot area - approx. 12.70 ha
- Area of perimeter fencing - approx. 9.94 ha
- Length of perimeter fencing - approx. 1,540 m
- Inverters - 4 x SMA SC 900 CP XT = 2 Double Inverter Stand
- Collecting Stations - 1
- Plant System Rating (about) - 4.9995 MWp-DC

construction and parameter

- shading - 1.5 modules
- sun angle / shadow angle - 13.72 / 18.78°



more parameter

- not considered
- Shadow
- Ground inclination north / south
- Ground inclination east / west

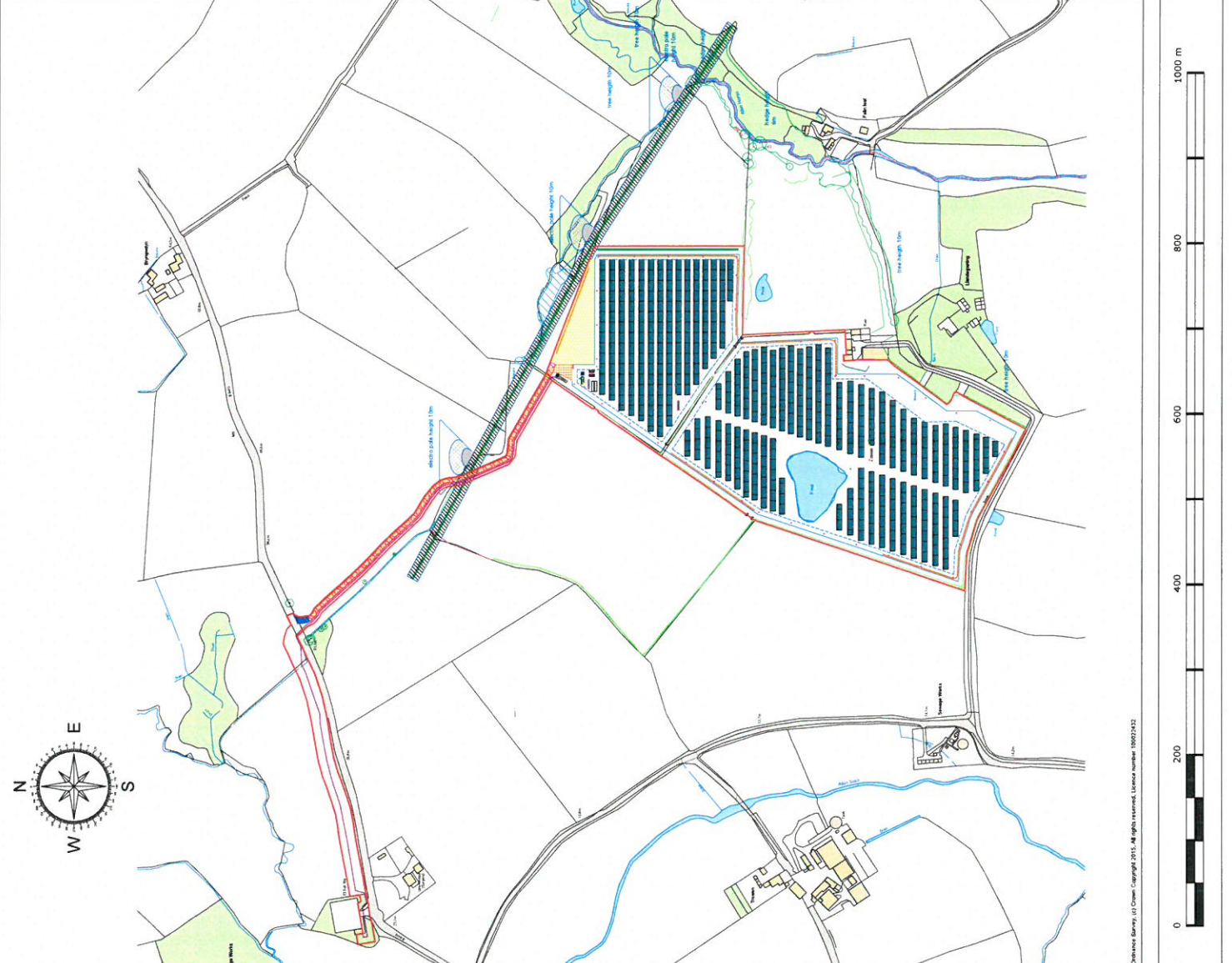
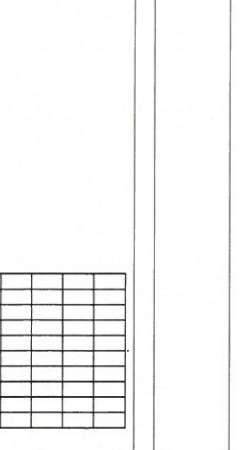
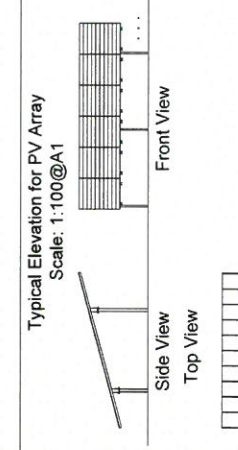
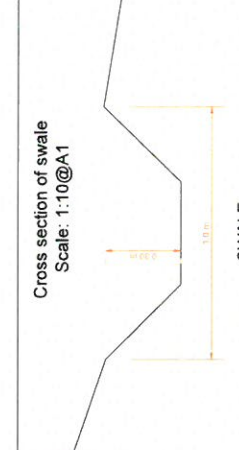
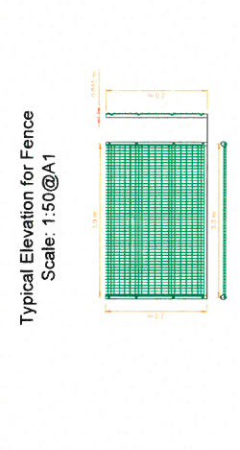
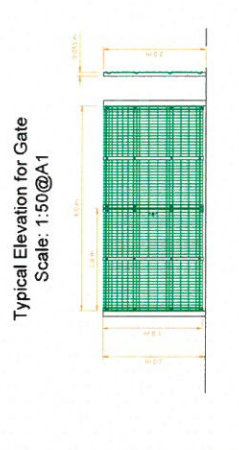
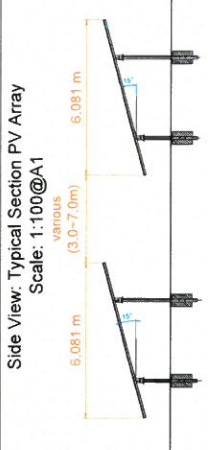
Rev	changes in the design	name	date	checked	date
V1	Site Plan	MLC	20.08.15		
V2	Amendments in Red line and cable route	MLC	20.11.15		

Site Plan scale 1: 2500 @ A1
 Drawing Number Botwnnog Solar Farm_P02_SP_RevB

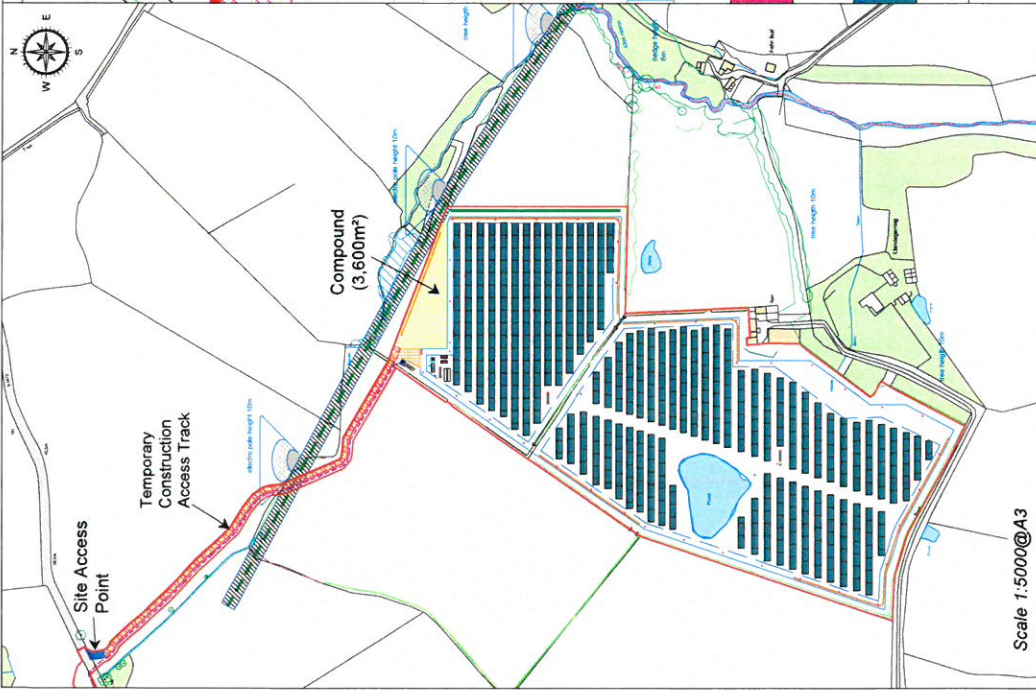
BELECTRIC GmbH
 BELECTRIC
 97299 Kalthausen
 Tel. +49 (0)9345 9804-0
 Fax. +49 (0)9345 9804-599

Christian Fries
 COO
 BELECTRIC

The drawings are the property of BELECTRIC. They may not be reproduced, stored in a retrieval system, or transmitted in any form or by any means, electronic, mechanical, photocopying, recording, or by any information storage and retrieval system, without the prior written permission of BELECTRIC. The reproduction, distribution and utilization of the documents as well as the communication of its contents without consent of BELECTRIC is prohibited. BELECTRIC shall not be held liable for any damage or loss of data. BELECTRIC reserves the right to change the drawings without notice. BELECTRIC is not responsible for any damage or loss of data. BELECTRIC is not responsible for any damage or loss of data. BELECTRIC is not responsible for any damage or loss of data.



Christian Fries (1) (09345) 9804-0, All rights reserved, License number: 10072422

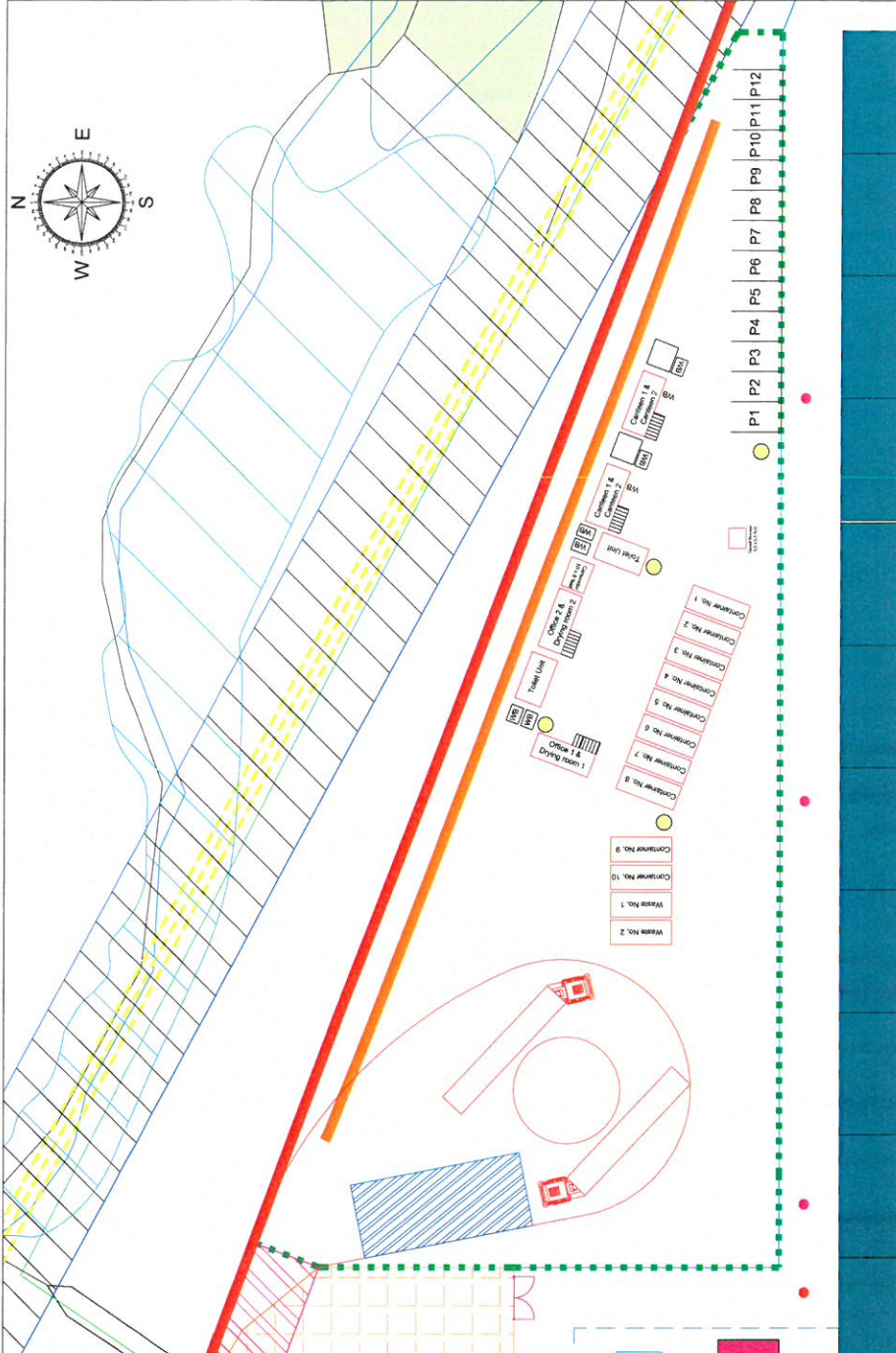


- Site Boundary
- Temporary Construction Access Track
- Temporary Construction Compound

Plan description:
 Botwnnog Solar Farm
 Temporary Construction Compound Layout Plan

Date:	Editor:	Revision:	Checked:
21/08/2015	M.L.C.		
20/11/2015	M.L.C.		

Drawing Reference:
 Botwnnog Solar Farm_P03_C03_RevB



- Site Boundary
- Wheel Washing Area
- Mobile Security Lighting Towers (Hydraulically adjustable in height)
- Employee Car Park Spaces
- Construction site facilities
- Box Trakpanel temporary laydown area
- Waste / recycling
- Water Bowser
- Effluent Tank

Scale 1:5000@A3

BELECTRIC
 Solar Ltd, United Kingdom
 Thorney Weir House,
 Thorney Mill Lane, Iwer,
 Buckinghamshire, SLO 9AQ
 Tel: +44 (0) 1895 452 640
 Web: www.belectric.co.uk

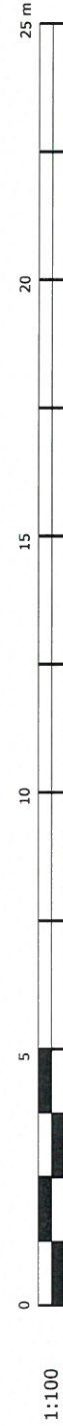
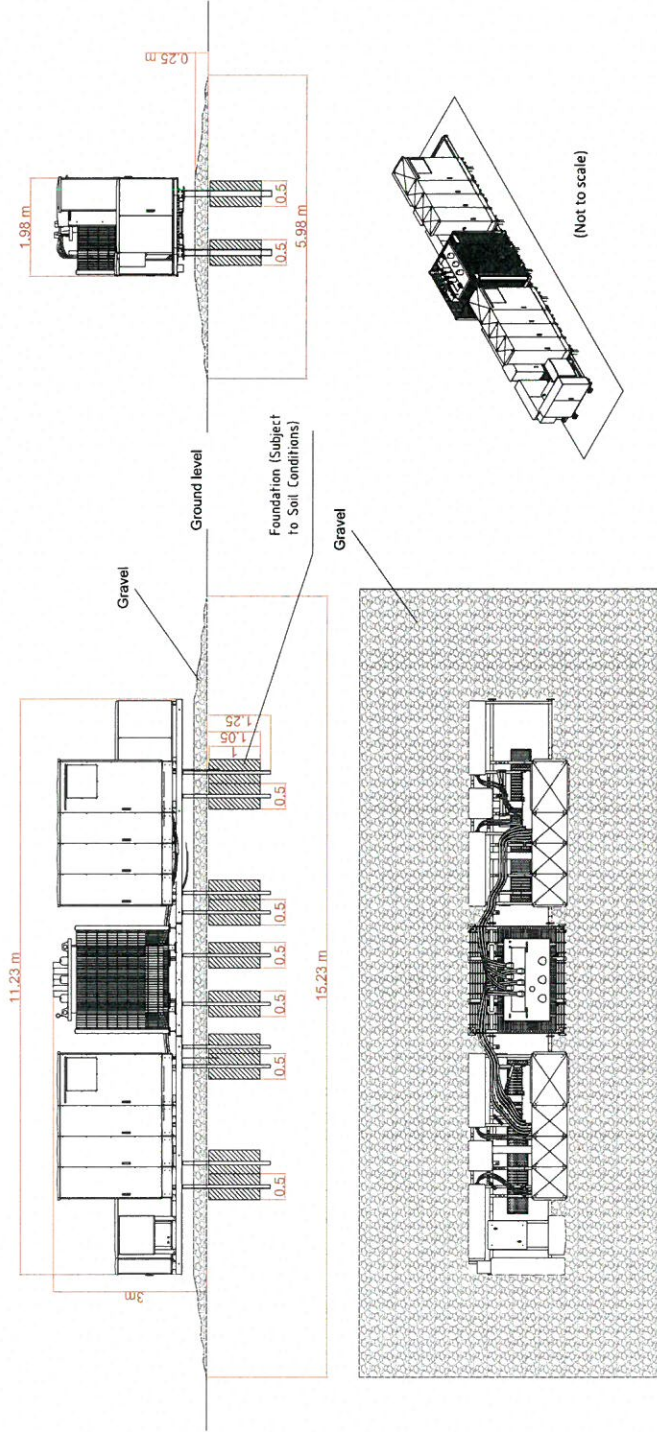
Site:
 Botwnnog Solar Farm
 Land south-east of Botwnnog
 Pwllheil,
 Gwynedd
 LL53 8DP

Coordinates: longitude: -04.5710 latitude: 52.8460

Reference drawings:

Date: 20/11/2015
 Scale: Various

Variances in design can occur to site conditions. This drawing may not be reproduced or be made available to third persons or competing companies without permissions. The reproduction, distribution and utilization of this document as well as the communication of its contents without explicit authorization is prohibited. Offenders will be held liable and can be fined.

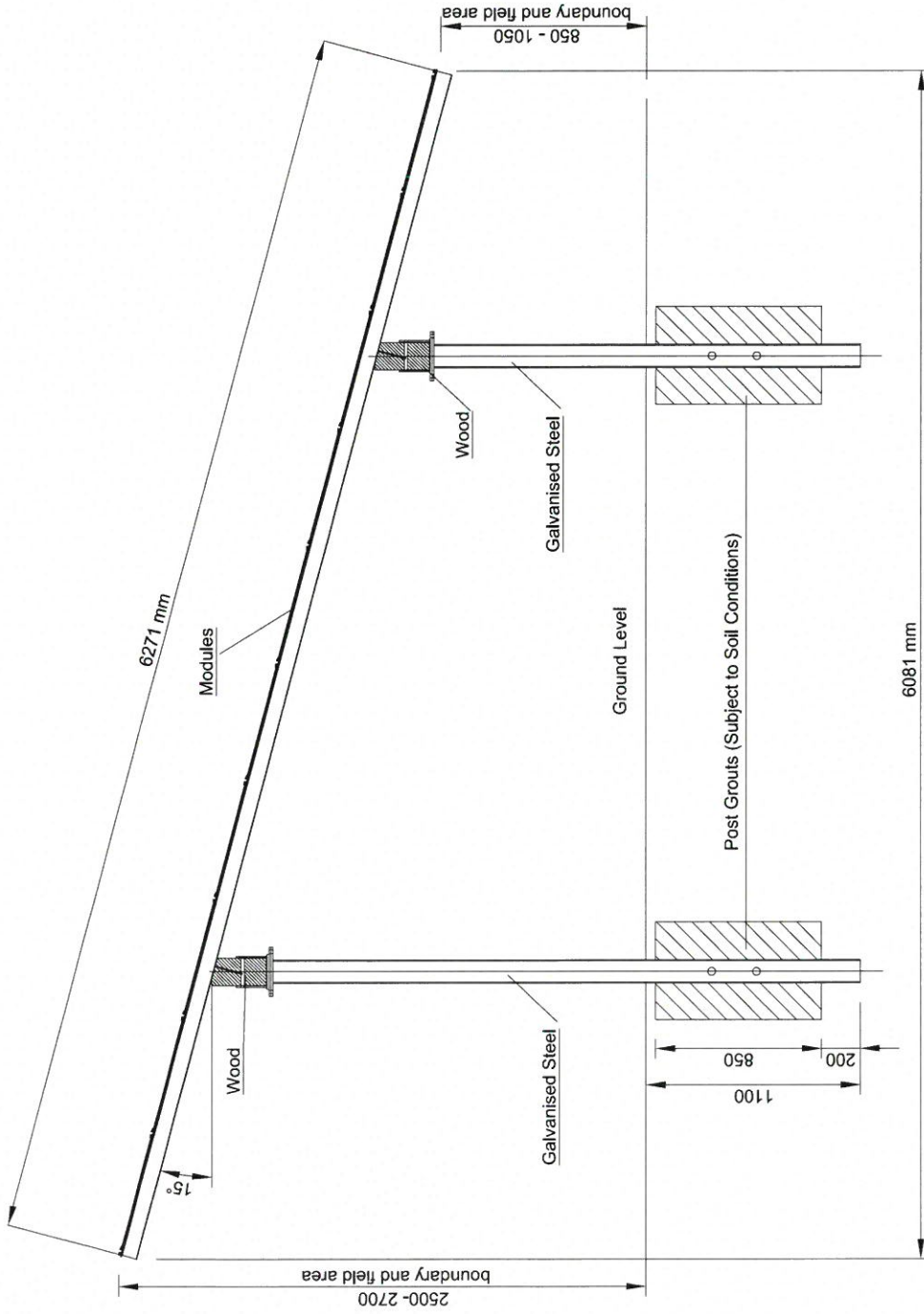


Plan description: Botwnnog Solar Farm Double Inverter Platform Elevations		Drawing Reference: Botwnnog Solar Farm_Plat_D1_RevA		Site: Botwnnog Solar Farm Land south-east of Botwnnog Pwllhell, Gwynedd LL53 8DP	
Date: 21/08/2015	Editor: M.L.C.	Revision:	Checked:	Coordinates: longitude: -04.5770 latitude: 52.8460	Reference drawings:
				Date: 21/08/2015	Scale: 1:100@A3



Thorney Weir House,
 Thorney Mill Lane, Iwer,
 Buckinghamshire, SLO 9AQ
 Tel: +44 (0) 1895 452 640
 Web: www.belectric.co.uk

Variations in design can occur to site conditions. This drawing may not be reproduced or be made available to third persons or competing companies without permissions. The reproduction, distribution and utilization of this document as well as the communication of its contents without explicit authorization is prohibited. Offenders will be held liable and can be fined.



BELECTRIC
Solar Ltd, United Kingdom
Thorney Weir House,
Thorney Mill Lane, Iwer,
Buckinghamshire, SL0 9AQ
Tel: +44 (0) 1895 452 640
Web: www.belectric.co.uk

Site:
Botwnnog Solar Farm
Land south-east of Botwnnog
Pwllheil,
Gwynedd
LL53 8DP

Coordinates: longitude: -04.5710 latitude: 52.8460
Reference drawings:

Date: 21/08/2015
Scale: 1:25@A3

Plan description:
Botwnnog Solar Farm
Solar Array Cross Section

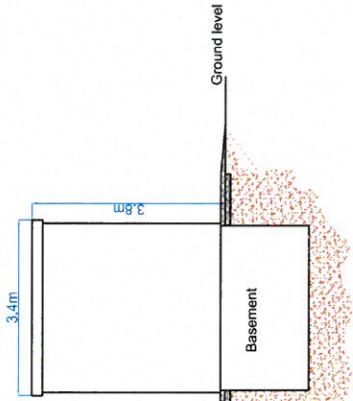
Date:	Editor:	Revision:	Checked:
21/08/2015	M.L.C.		

Varitions in design can occur to site conditions. This drawing may not be reproduced or be made available to third persons or competing companies without permissions. The reproduction, distribution and utilization of this document as well as the communication of its contents without explicit authorization is prohibited. Offenders will be held liable and can be fined.

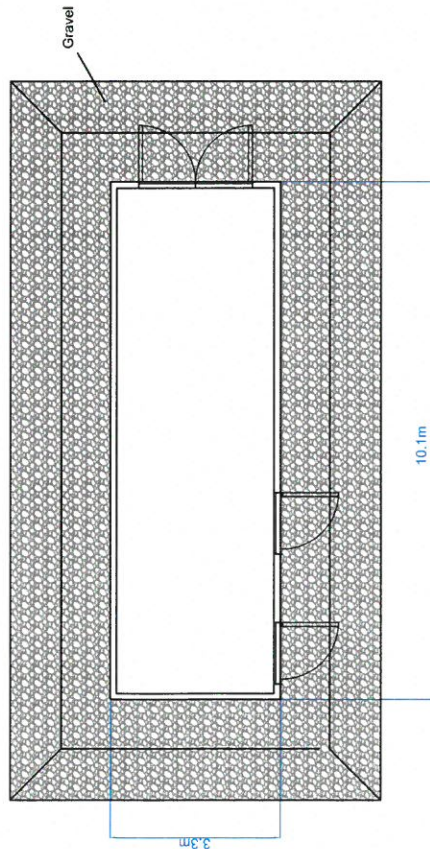
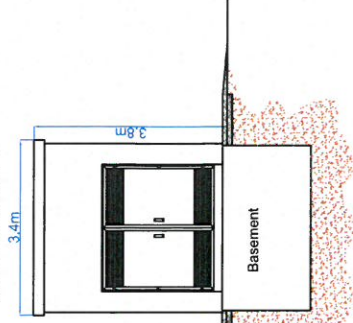
Front Elevation



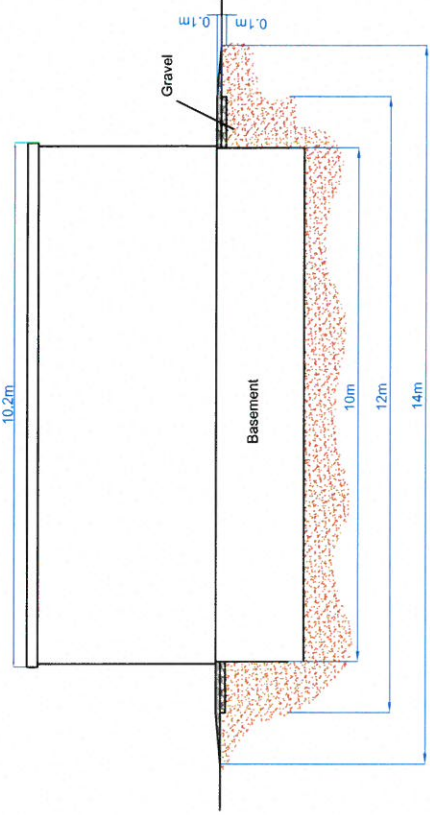
Side Elevation 2



Side Elevation 1



Proposed Floor Plan



Rear Elevation

Colour of Structure:
Moss Green
(RAL 6005)



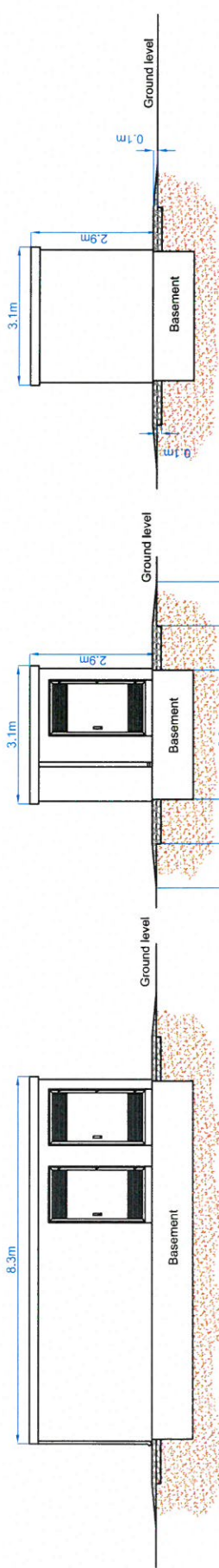
Plan description: Botwinnog Solar Farm DNO Transfer Station Elevations		Drawing Reference: Botwinnog Solar Farm_PO7_TIS_RevA	
Date:	21/08/2015	Editor:	M.L.C.
Revision:		Checked:	
Coordinates: longitude: -04.5710 latitude: 52.8460 Reference drawings:		Site: Botwinnog Solar Farm Land south-east of Botwinnog Pwllhell Gwynedd LL53 8DP	
Date: 21/08/2015		Scale: 1:100@A3	

OBELECTRIC®
Solar Ltd, United Kingdom

Thorney Weir House,
Thorney Mill Lane, Iwer,
Buckinghamshire, SL0 9AQ

Tel: +44 (0) 1895 452 640
Web: www.obelectric.co.uk

Varitions in design can occur to site conditions. This drawing may not be reproduced or be made available to third persons or competing companies without permissions. The reproduction, distribution and utilization of this document as well as the communication of its contents without explicit authorization is prohibited. Offenders will be held liable and can be fined.

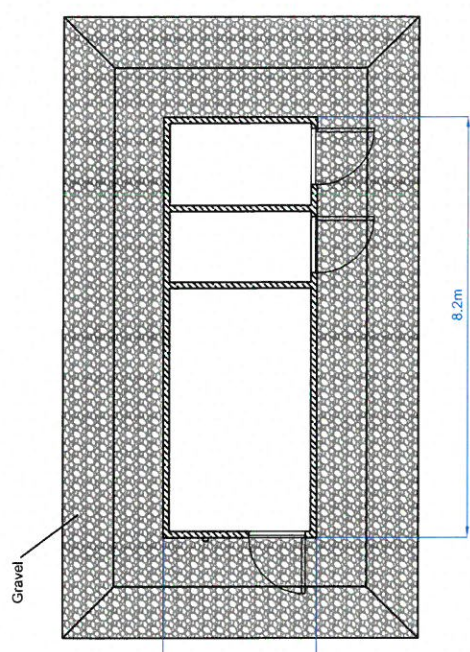
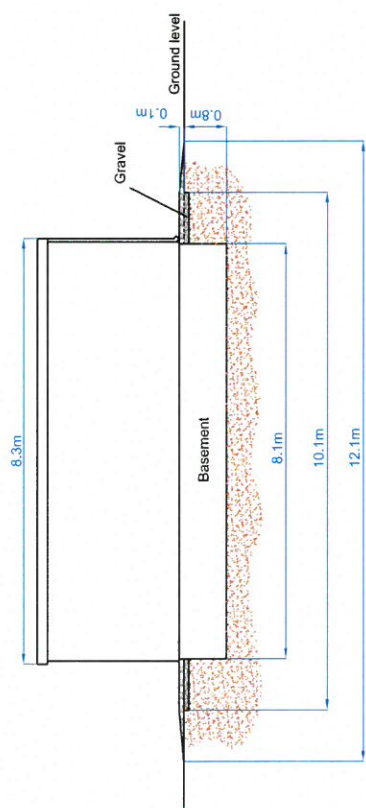


Side Elevation 2

Side Elevation 1

Front Elevation

Rear Elevation



Proposed Floor Plan

Colour of Structure:
Moss Green
(RAL 6005)



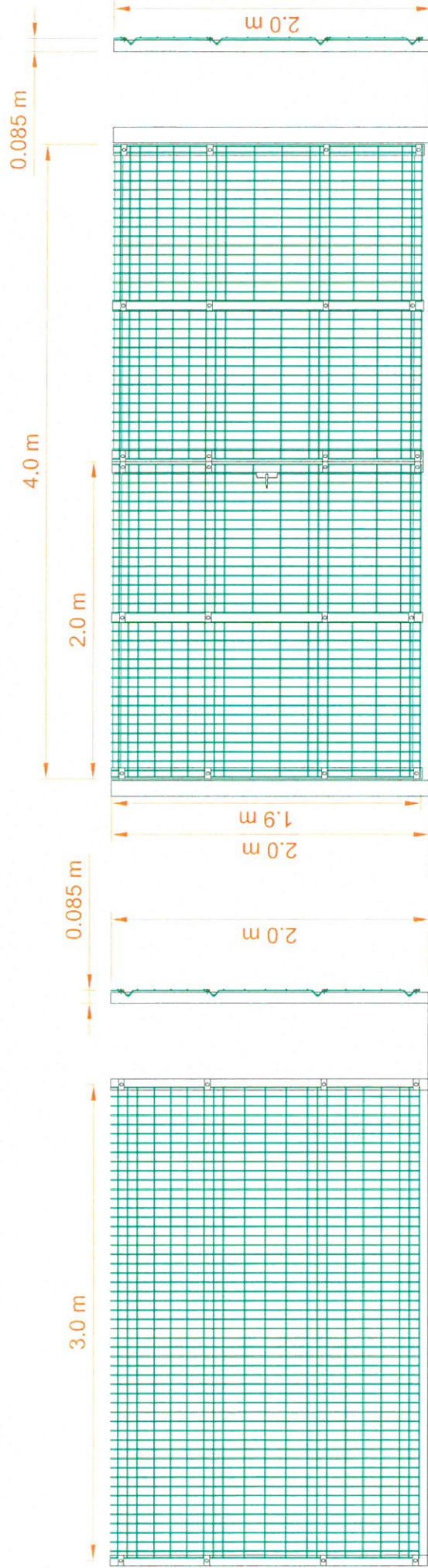
Plan description: Botwnnog Solar Farm Collecting Station Elevations		Drawing Reference: Botwnnog Solar Farm_P08_CS_RWA		Site: Botwnnog Solar Farm Land south-east of Botwnnog Pwllhell Gwynedd LL53 8DP	
Date:	21/08/2015	Editor:	M.L.C.	Coordinates:	longitude: -04.5770 latitude: 52.8460
Revision:		Checked:		Reference drawings:	
				Date:	21/08/2015
				Scale:	1:100@A3

BELECTRIC®
Solar Ltd, United Kingdom
Thorney Well House,
Thorney Mill Lane, Iwer,
Buckinghamshire, SL0 9AQ
Tel: +44 (0) 1895 452 640
Web: www.belectric.co.uk

Varitions in design can occur to site conditions. This drawing may not be reproduced or be made available to third persons or competing companies without permissions. The reproduction, distribution and utilization of this document as well as the communication of its contents without explicit authorization is prohibited. Offenders will be held liable and can be fined.

Fence Elevations

Gate Elevations



Colour of Structure:
Moss Green
(RAL 6005)



Plan description: Botwnnog Solar Farm Fence and Gate Elevations		Drawing Reference: Botwnnog Solar Farm_P10_FGE_Rev/A		Coordinates: longitude: -04.5710 latitude: 52.8460 Reference drawings:		Site: Botwnnog Solar Farm Land south-east of Botwnnog Pwllheli, Gwynedd LL53 8DP		Solar Ltd, Llandudno, Gwynedd, Wales Thorney Weir House, Thorney Mill Lane, Iwer, Buckinghamshire, SLO 9AQ Tel: +44 (0) 1895 452 640 Web: www.belectric.co.uk	
Date:	21/08/2015	Editor:	M.L.C.	Revision:		Checked:		Date:	21/08/2015
								Scale:	1:25@A3

Variations in design can occur to site conditions. This drawing may not be reproduced or be made available to third persons or competing companies without permissions. The reproduction, distribution and utilization of this document as well as the communication of its contents without explicit authorization is prohibited. Offenders will be held liable and can be fined.

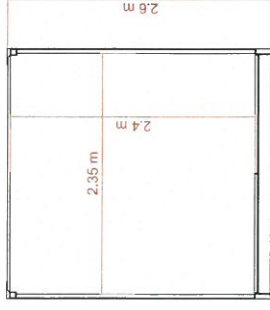
Colour of Structure:
Moss Green
(RAL 6005)



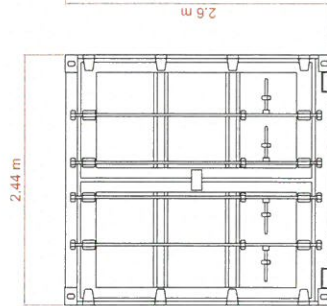
Side



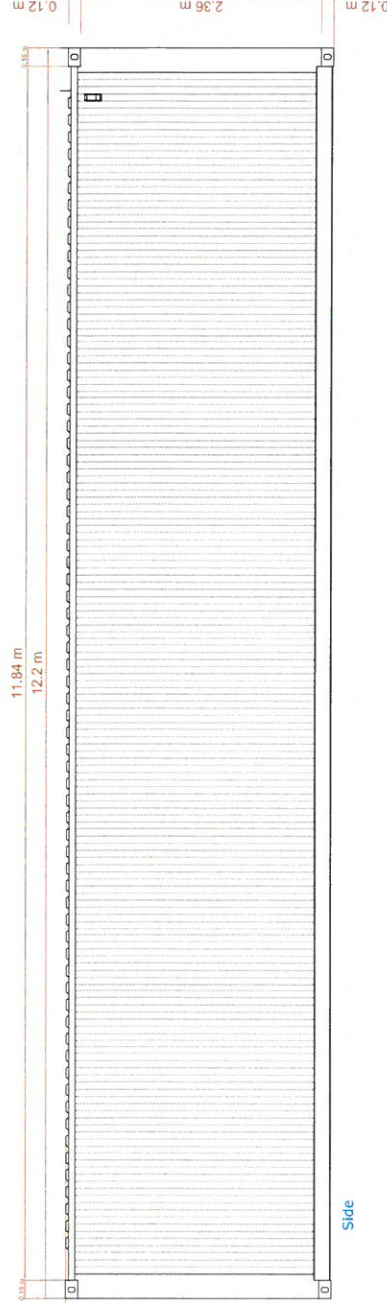
Floor Plan



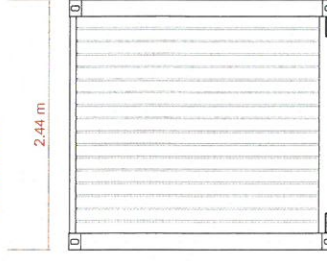
Cross Section



Front



Side



Rear



Plan description: Botwnnog Solar Farm General Storage Container / Energy Storage Container Elevations		Drawing Reference: Botwnnog Solar Farm_P11_SC_RevA		Site: Botwnnog Solar Farm Land south-east of Botwnnog Pwllheil Gwynedd LL53 8DP	
Date: 21/08/2015	Editor: M.L.C.	Revision:	Checked:	Coordinates: longitude: -04.5710 latitude: 52.8460	Reference drawings:
Date: 21/08/2015		Scale: 1:50@A3		Scale: 1:50@A3	

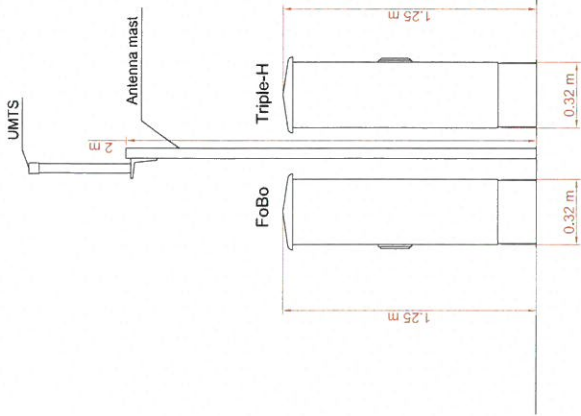
BELECTRIC®
Solar Ltd. United Kingdom

Thorney Weir House,
Thorney Mill Lane, Iwer,
Buckinghamshire, SL0 9AQ

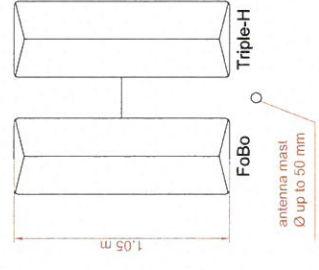
Tel: +44 (0) 1895 452 640
Web: www.belectric.co.uk

Varitions in design can occur to site conditions. This drawing may not be reproduced or be made available to third persons or competing companies without permissions. The reproduction, distribution and utilization of this document as well as the communication of its contents without explicit authorization is prohibited. Offenders will be held liable and can be fined.

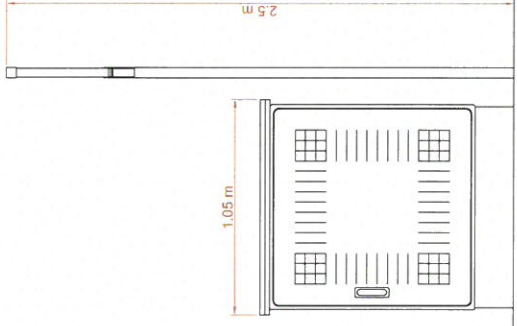
Front View



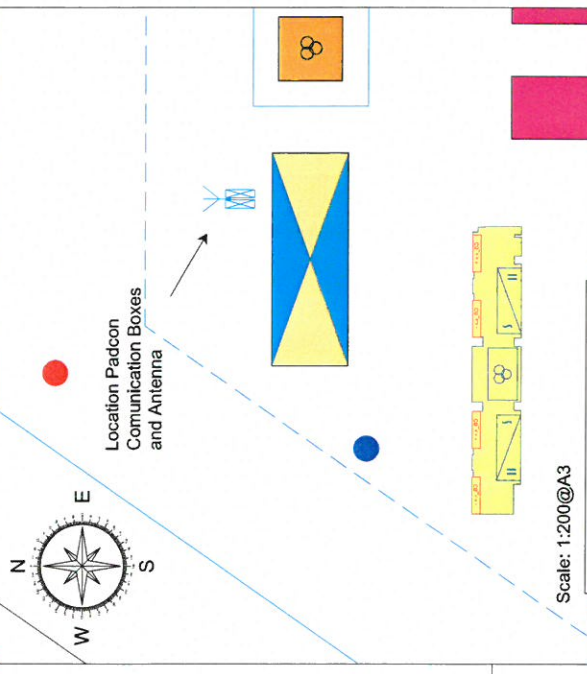
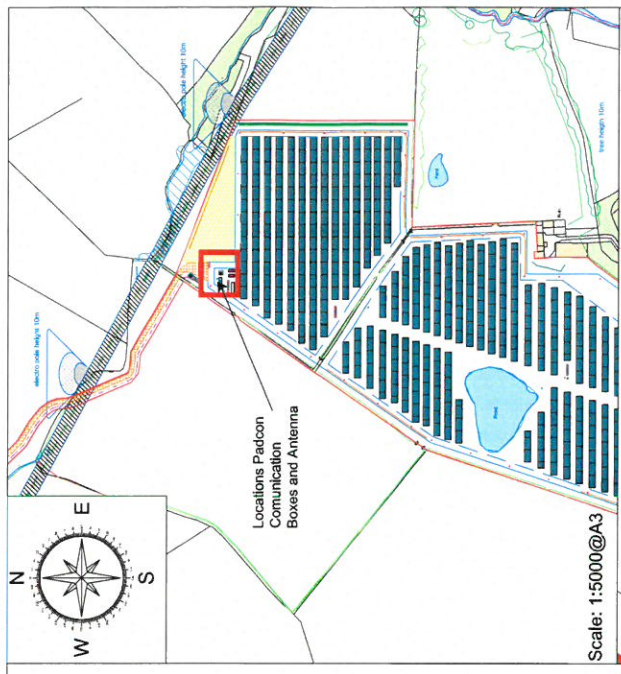
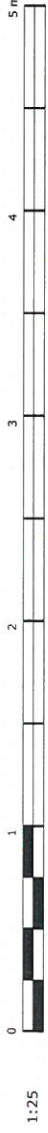
Top View



Side View



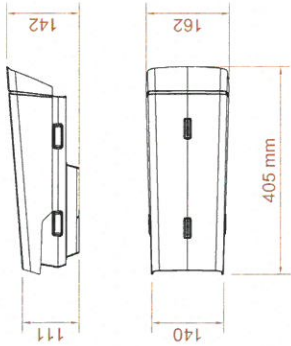
Scale: 1:25@A3



Plan description: Botwnnog Solar Farm Padcon Communication Box and Antenna Elevations		Drawing Reference: Botwnnog Solar Farm_P12_PC_RevA	
Date: 21/08/2015	Editor: M.L.C.	Revision:	Checked:
Coordinates: longitude: -04.5710 latitude: 52.8460		Reference drawings:	
Site: Botwnnog Solar Farm Land south-east of Botwnnog Pwllheli, Gwynedd LL53 8DP		Date: 21/08/2015 Scale: various	
BELECTRIC® Solar Ltd, United Kingdom Thorney Weir House, Thorney Mill Lane, Iwer, Buckinghamshire, SL0 9AQ Tel: +44 (0) 1895 452 640 Web: www.belectric.co.uk			

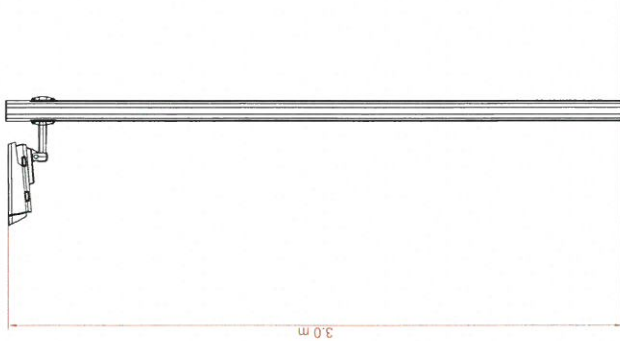
Varitions in design can occur to site conditions. This drawing may not be reproduced or be made available to third persons or competing companies without permissions. The reproduction, distribution and utilization of this document as well as the communication of its contents without explicit authorization is prohibited. Offenders will be held liable and can be fined.

Camera side & top view
(measurements in mm)

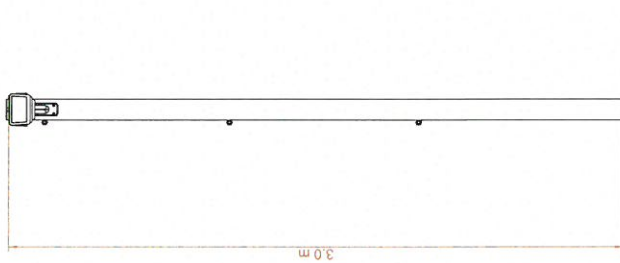


Scale: 1:10@A3

Side View

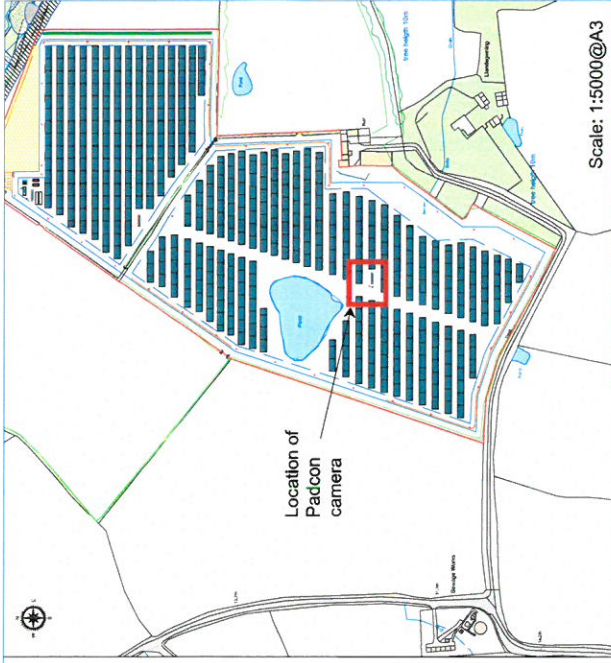
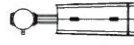


Front View



Scale: 1:25@A3

Top View



Scale: 1:5000@A3



Reference Padcon Camera - Double Inverter Station



Scale: 1:200@A3

Plan description:
Botwnnog Solar Farm
Padcon Camera Elevations

Drawing Reference:
Botwnnog Solar Farm_P13_PE_RevA

Date:	Editor:	Revision:	Checked:
21/08/2015	M.L.C.		

Date: 21/08/2015
Scale: Various

Coordinates: longitude: -04.5770 latitude: 52.8460

Reference drawings:

Site:
Botwnnog Solar Farm
Land south-east of Botwnnog
Pwllheli
Gwynedd
LL53 8DP

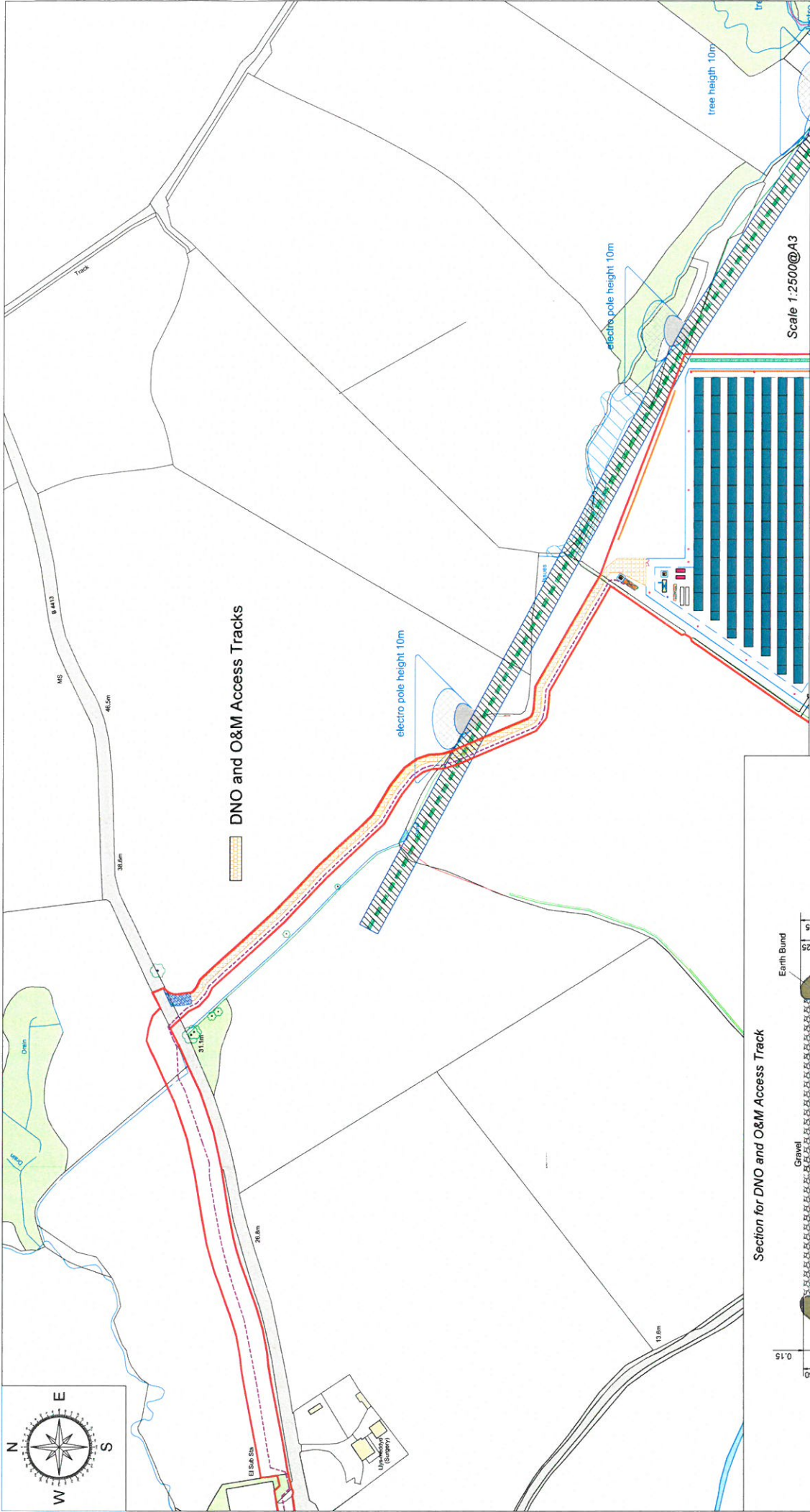


Solar Ltd, United Kingdom

Thorney Weir House,
Thorney Mill Lane, Iwer,
Buckinghamshire, SL0 9AQ

Tel: +44 (0) 1895 452 640
Web: www.belectric.co.uk

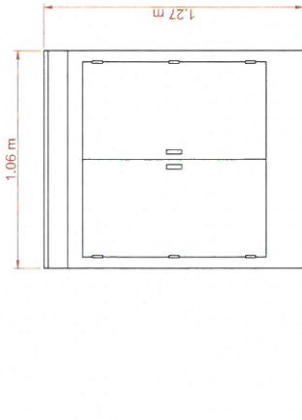
Variations in design can occur to site conditions. This drawing may not be reproduced or be made available to third persons or competing companies without permissions. The reproduction, distribution and utilization of this document as well as the communication of its contents without explicit authorization is prohibited. Offenders will be held liable and can be fined.



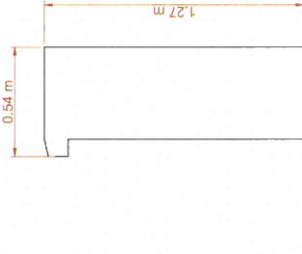
Plan description: Botwnnog Solar Farm DNO Access Track Details		Drawing Reference: Botwnnog Solar Farm_P14_DNO_RevB	
Date:	Editor:	Revision:	Checked:
21/08/2015	M.L.C.		
20/11/2015	M.L.C.		
		Date: 20/11/2015	Scale: Various
Coordinates: longitude: -04.5770 latitude: 52.8460 Reference drawings:		Site: Botwnnog Solar Farm Land south-east of Botwnnog Pwllheli, Gwynedd LL53 8DP	
OBLECTRIC® Solar Ltd, United Kingdom Thorney Weir House, Thorney Mill Lane, Iwer, Buckinghamshire, SLO 9AQ Tel: +44 (0) 1895 452 640 Web: www.belectric.co.uk			

Variations in design can occur to site conditions. This drawing may not be reproduced or be made available to third persons or competing companies without permissions. The reproduction, distribution and utilization of this document as well as the communication of its contents without explicit authorization is prohibited. Offenders will be held liable and can be fined.

Front View



Side View

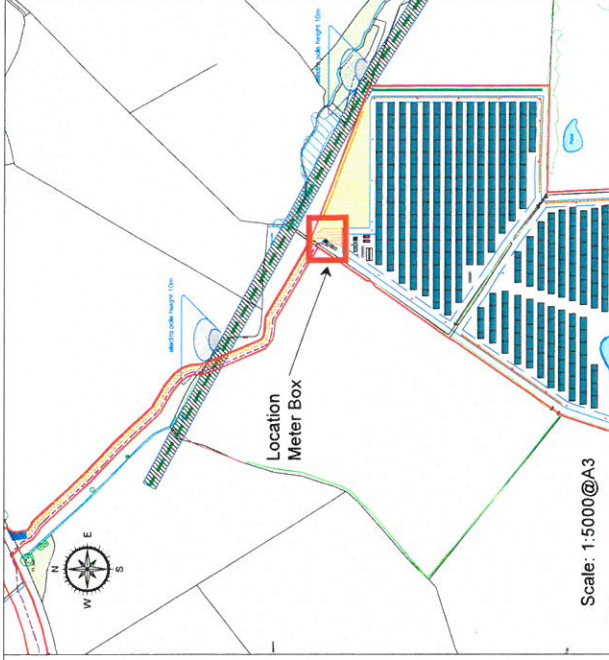


Top View



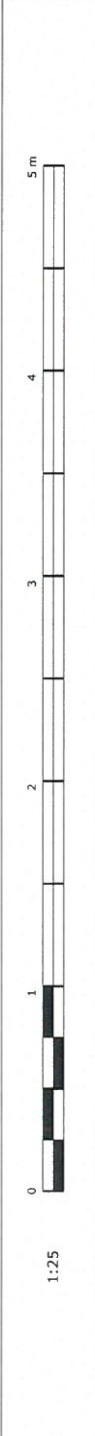
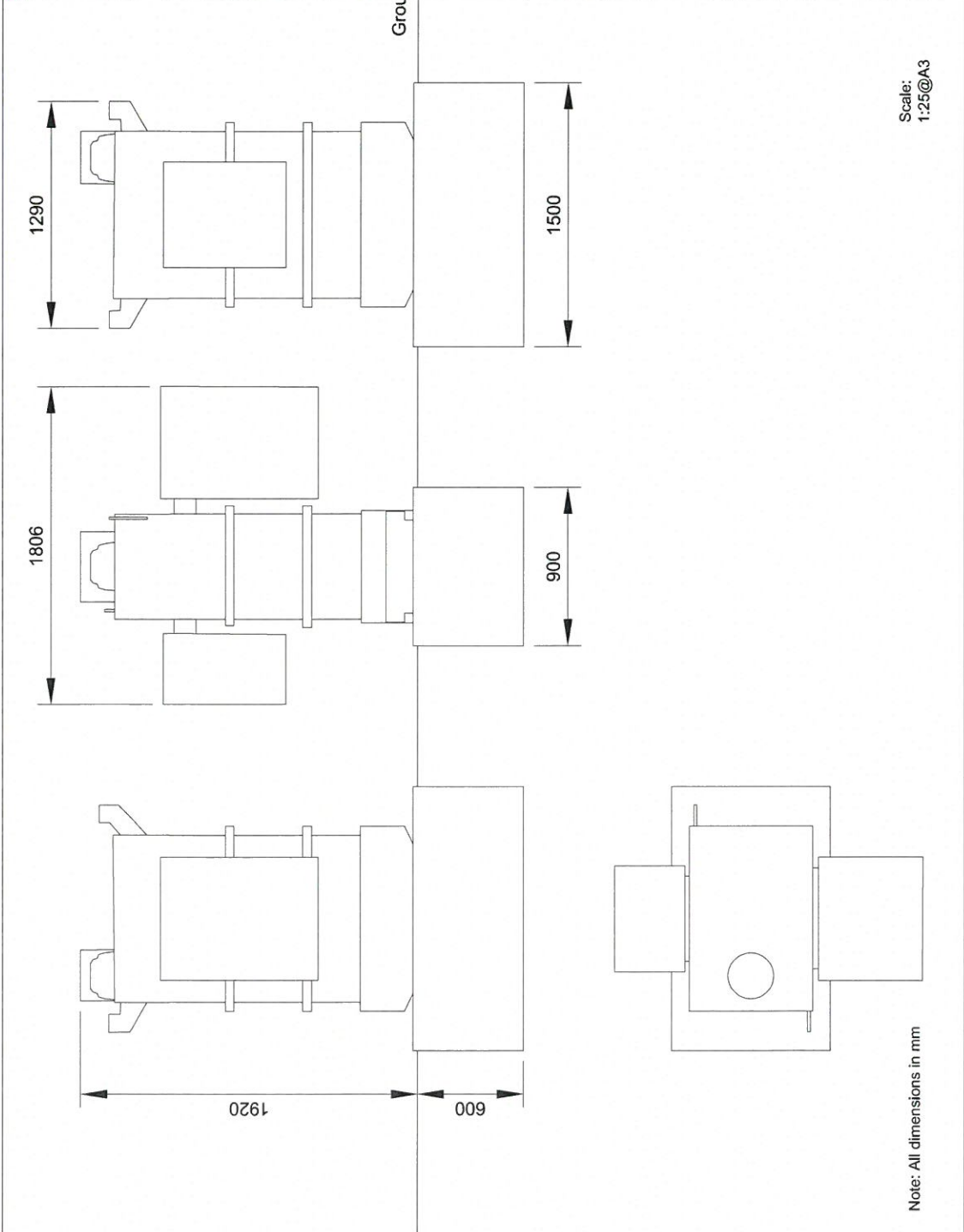
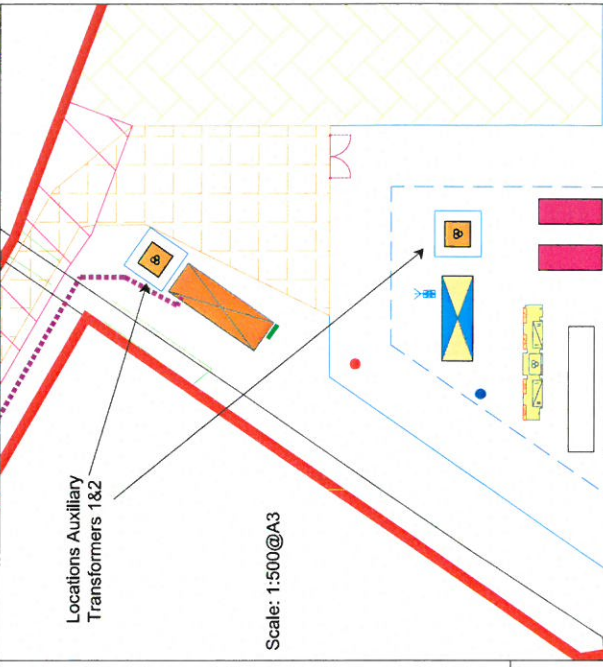
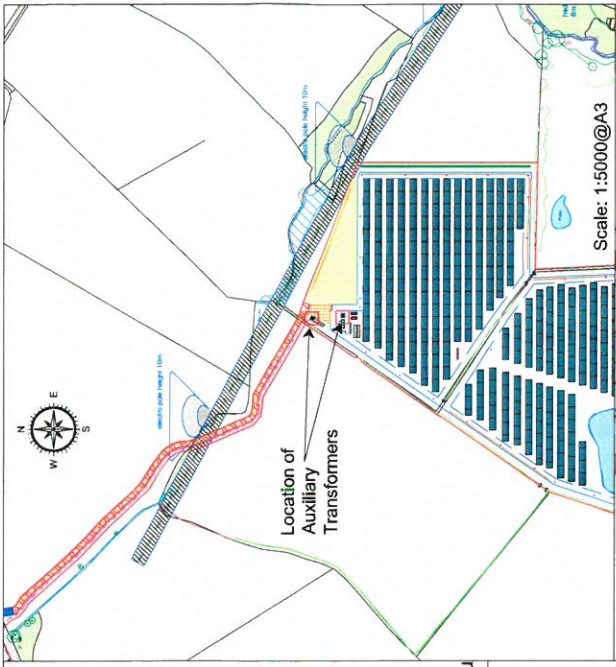
Colour:
Dark Green

Scale: 1:25@A3



Plan description: Botwnnog Solar Farm Meter Box Elevations		Drawing Reference: Botwnnog Solar Farm_P15_MB_Rev6	
Date: 21/08/2015 20/11/2015	Editor: M.L.C. M.L.C.	Revision:	Checked:
Coordinates: longitude: -04.5710 latitude: 52.8460		Reference drawings:	
Site: Botwnnog Solar Farm Land south-east of Botwnnog Pwllhell Gwynedd LL53 8DP		Date: 20/11/2015 Scale: various	
OBLECTRIC® Solar Ltd, United Kingdom Thorney Weir House, Thorney Mill Lane, Iwer, Buckinghamshire, SL0 9AQ Tel: +44 (0) 1895 452 640 Web: www.belectric.co.uk			

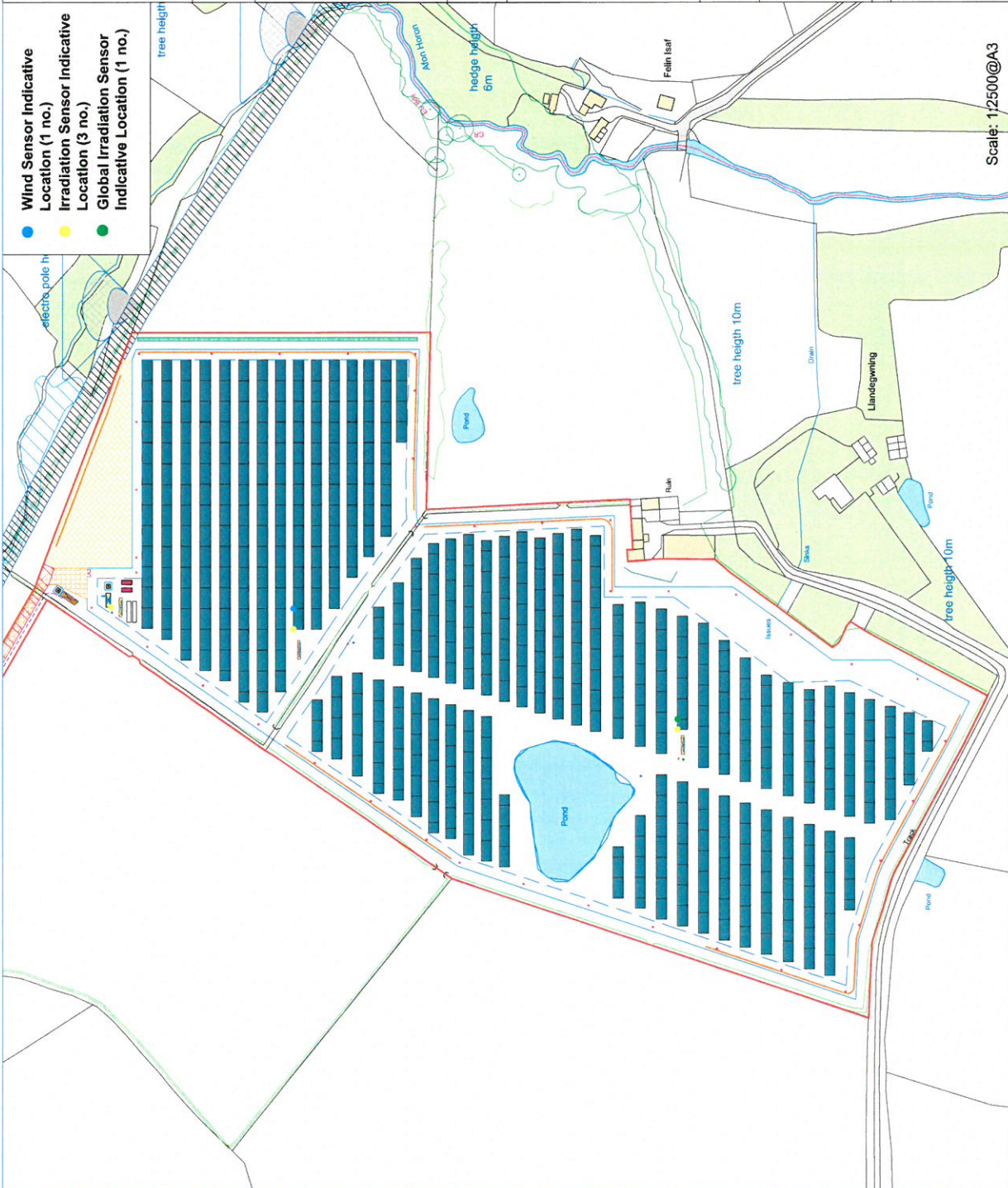
Variations in design can occur to site conditions. This drawing may not be reproduced or be made available to third persons or competing companies without permissions. The reproduction, distribution and utilization of this document as well as the communication of its contents without explicit authorization is prohibited. Offenders will be held liable and can be fined.



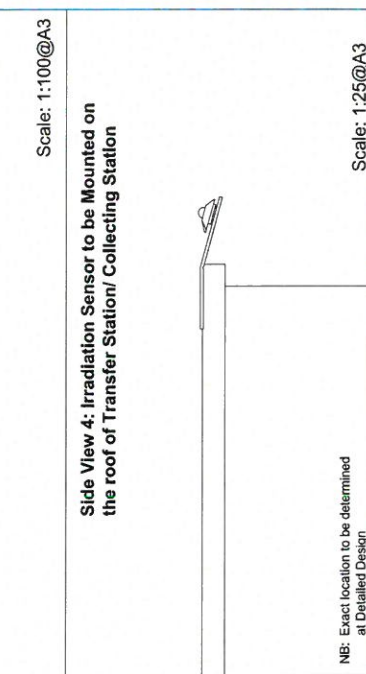
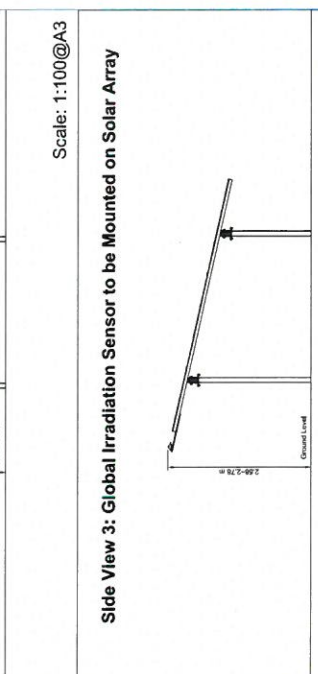
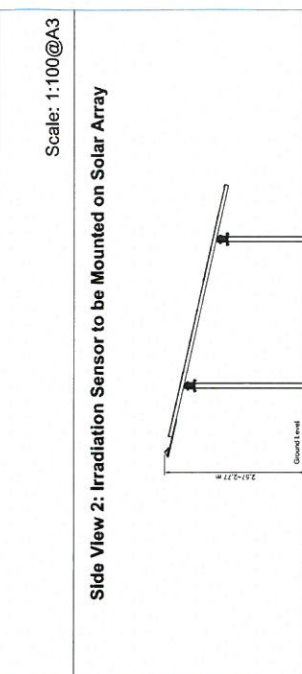
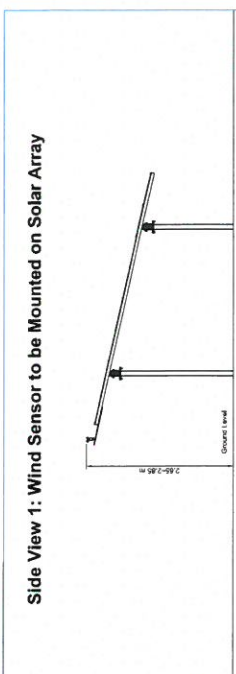
Plan description: Botwnnog Solar Farm Auxiliary Transformer		Drawing Reference: Botwnnog Solar Farm_P1E_A1_RevA		Coordinates: longitude: -04.5770 latitude: 52.8460	
Date: 21/08/2015	Editor: M.L.C.	Revision:	Checked:	Reference drawings:	Site: Botwnnog Solar Farm Land south-east of Botwnnog Pwllheli, Gwynedd LL53 9DP
					Scale: various
					Date: 21/08/2015

BELECTRIC®
 Solar Ltd, United Kingdom
 Thorney Weir House,
 Thorney Mill Lane, Iwer,
 Buckinghamshire, SL0 9AQ
 Tel: +44 (0) 1895 452 640
 Web: www.belectric.co.uk

Variations in design can occur to site conditions. This drawing may not be reproduced or be made available to third persons or competing companies without permissions. The reproduction, distribution and utilization of this document as well as the communication of its contents without explicit authorization is prohibited. Offenders will be held liable and can be fined.



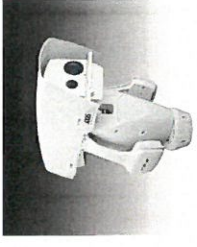
Plan description: Botwnnog Solar Farm Sensors Plan		Drawing Reference: Botwnnog Solar Farm_P1_Sensors_Plan	
Date:	Editor:	Revision:	Checked:
21/08/2015	M.L.C.		
Date:	Date:	Scale:	
21/08/2015	21/08/2015	various	
Coordinates:		longitude:	latitude:
		-04 5770	52 8460
Reference drawings:			



Site:
 Botwnnog Solar Farm
 Land south-east of Botwnnog
 Pwllhell,
 Gwynedd
 LL53 8DP

OBLECTRIC®
 Solar Ltd, United Kingdom
 Thorney Weir House,
 Thorney Mill Lane, Iwer,
 Buckinghamshire, SLO 9AQ
 Tel: +44 (0) 1895 452 640
 Web: www.oblectric.co.uk

Variations in design can occur to site conditions. This drawing may not be reproduced or be made available to third persons or competing companies without permissions. The reproduction, distribution and utilization of this document as well as the communication of its contents without explicit authorization is prohibited. Offenders will be held liable and can be fined.

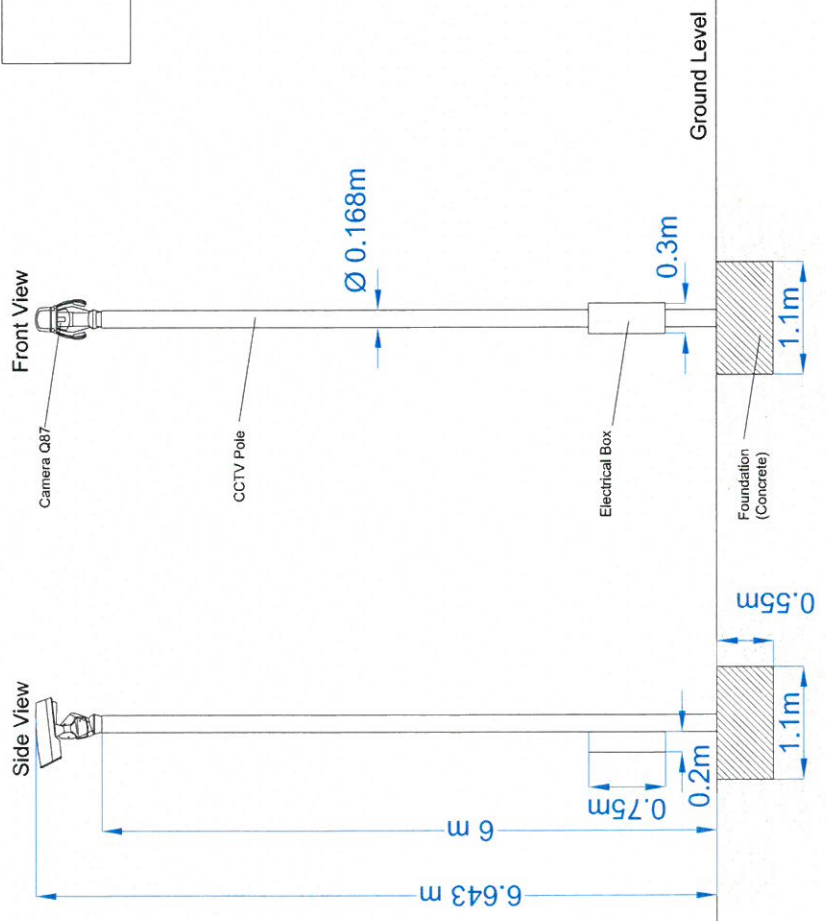


Not to Scale

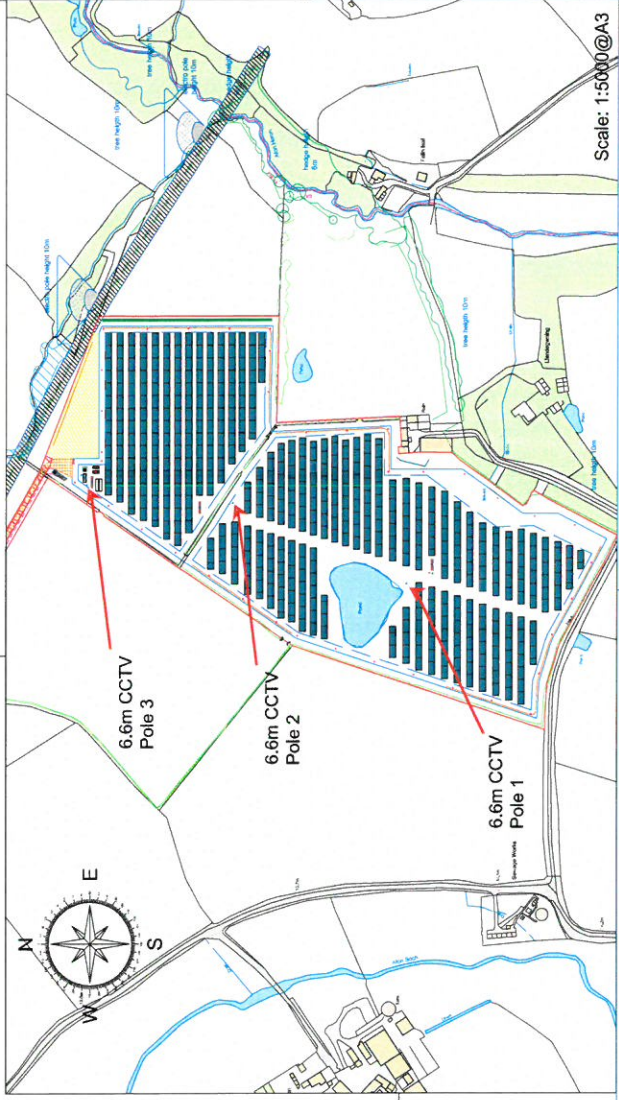
Colour of CCTV Pole and Electrical Box: Moss Green (RAL 6005)



Colour of Camera: White



Scale: 1:50@A3



Scale: 1:5000@A3

BELECTRIC
Solar Ltd, United Kingdom
Thorney Weir House,
Thorney Mill Lane, Iwer,
Buckinghamshire, SLO 9AQ
Tel: +44 (0) 1895 452 640
Web: www.belectric.co.uk

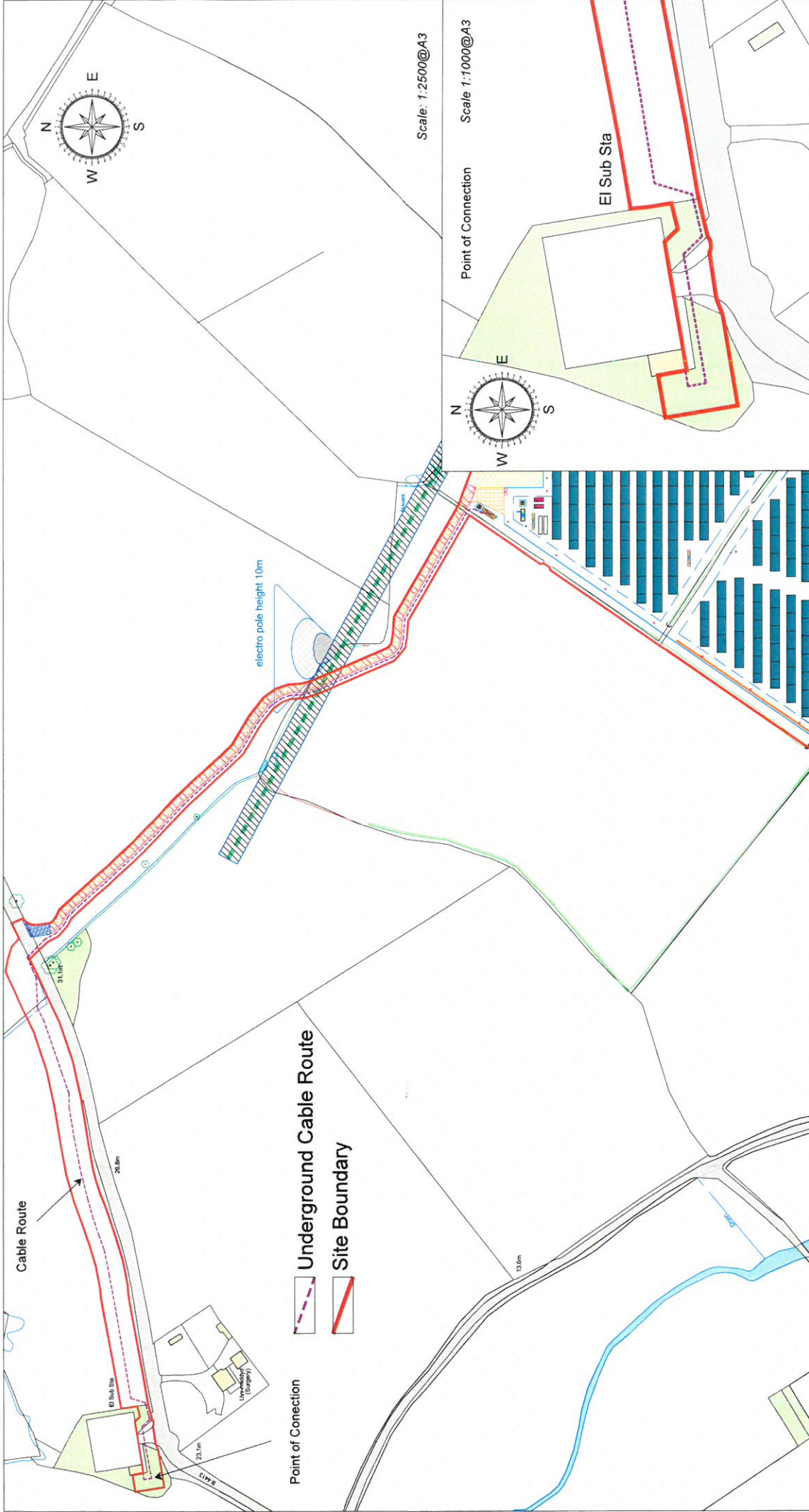
Site: Botwnnog Solar Farm
Land south-east of Botwnnog
Pwllheli,
Gwynedd
LL53 8DP

Coordinates:	longitude: -04.5770	latitude: 52.8460
Reference drawings:		

Drawing Reference:	Botwnnog Solar Farm_P22_pmcCCTV_RevA
Date:	21/08/2015
Editor:	M.L.C.
Revision:	
Checked:	
Date:	21/08/2015
Scale:	Various

Plan description:	Botwnnog Solar Farm Pole-mounted CCTV Proposal	
Date:	21/08/2015	
Editor:	M.L.C.	
Revision:		
Checked:		
Date:	21/08/2015	
Scale:	Various	

Variations in design can occur to site conditions. This drawing may not be reproduced or be made available to third persons or competing companies without permissions. The reproduction, distribution and utilization of this document as well as the communication of its contents without explicit authorization is prohibited. Offenders will be held liable and can be fined.



Plan description: Bothnwg Solar Farm Cable Route, Point of Connection		Drawing Reference: Bothnwg Solar Farm_P22_POC_RevB	
Date:	Editor:	Revision:	Checked:
21/08/2015	M.L.C.		
20/11/2015	M.L.C.		
		Date:	Scale:
		20/11/2015	various
Coordinates: longitude: -04.5710 latitude: 52.8460		Reference drawings:	
Site: Bothnwg Solar Farm Land south-east of Bothnwg Pwllheli, Gwynedd LL53 8DP		BELECTRIC® Solar Ltd, United Kingdom Thorney Weir House, Thorney Mill Lane, Iwer, Buckinghamshire, SLO 9AQ Tel: +44 (0) 1895 452 640 Web: www.belectric.co.uk	

Variations in design can occur to site conditions. This drawing may not be reproduced or be made available to third persons or competing companies without permissions. The reproduction, distribution and utilization of this document as well as the communication of its contents without explicit authorization is prohibited. Offenders will be held liable and can be fined.