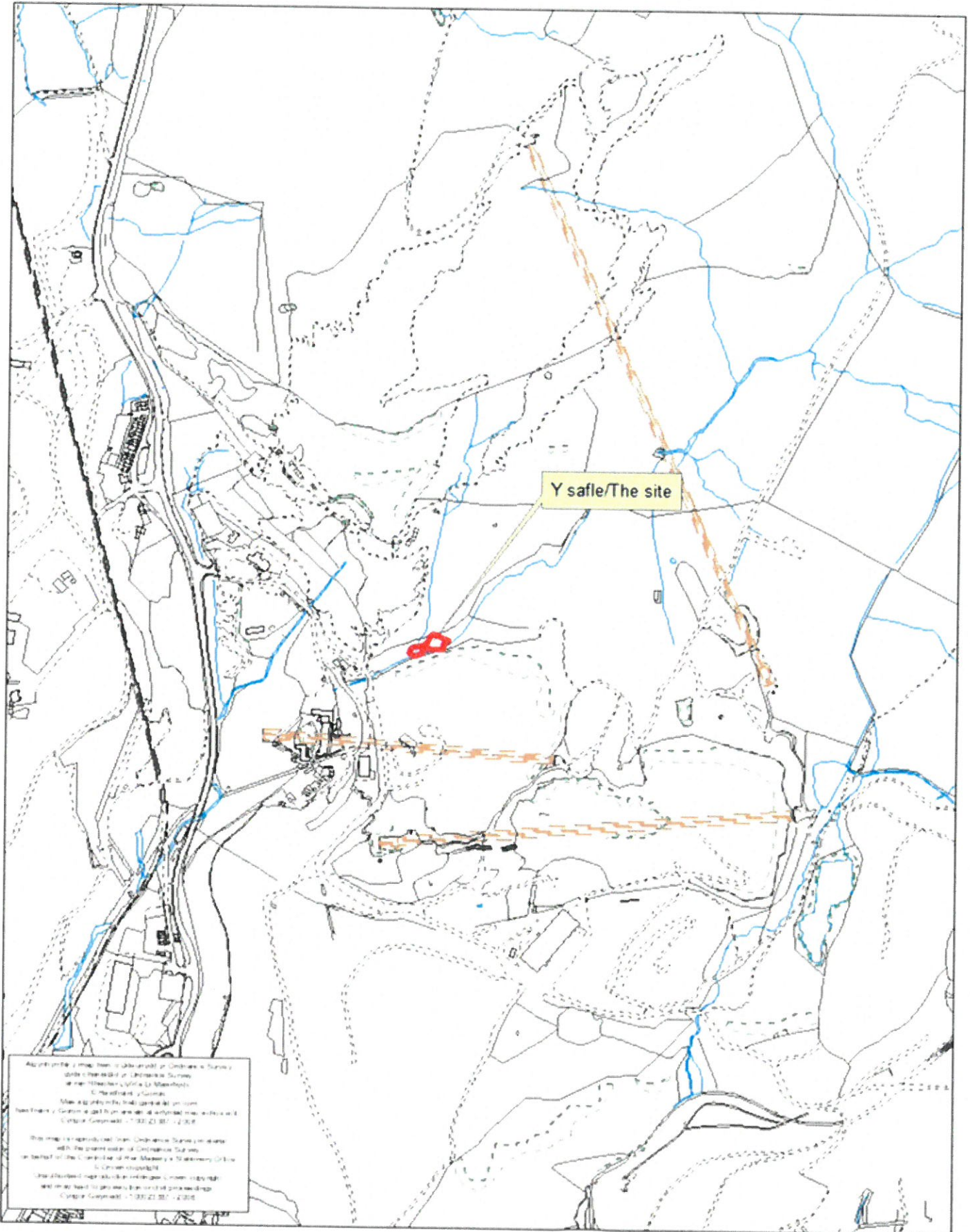


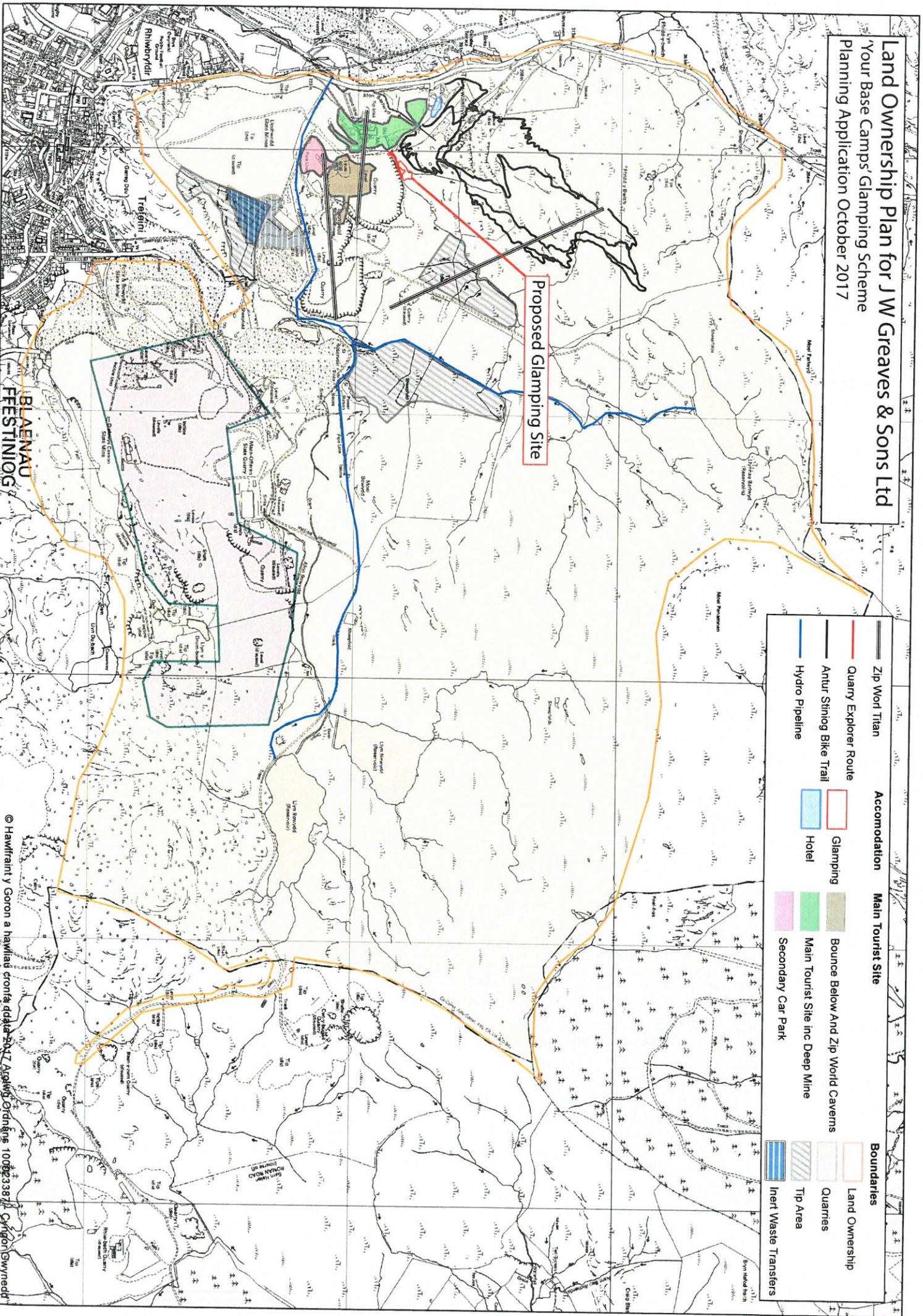


Rhif y Cais / Application Number : C17/0982/03/LL

Cynllun lleoliad ar gyfer adnabod y safle yn unig. Dim i raddfa.  
Location Plan for identification purposes only. Not to scale.



**Land Ownership Plan for JW Greaves & Sons Ltd**  
 Your Base Camps' Glamping Scheme  
 Planning Application October 2017



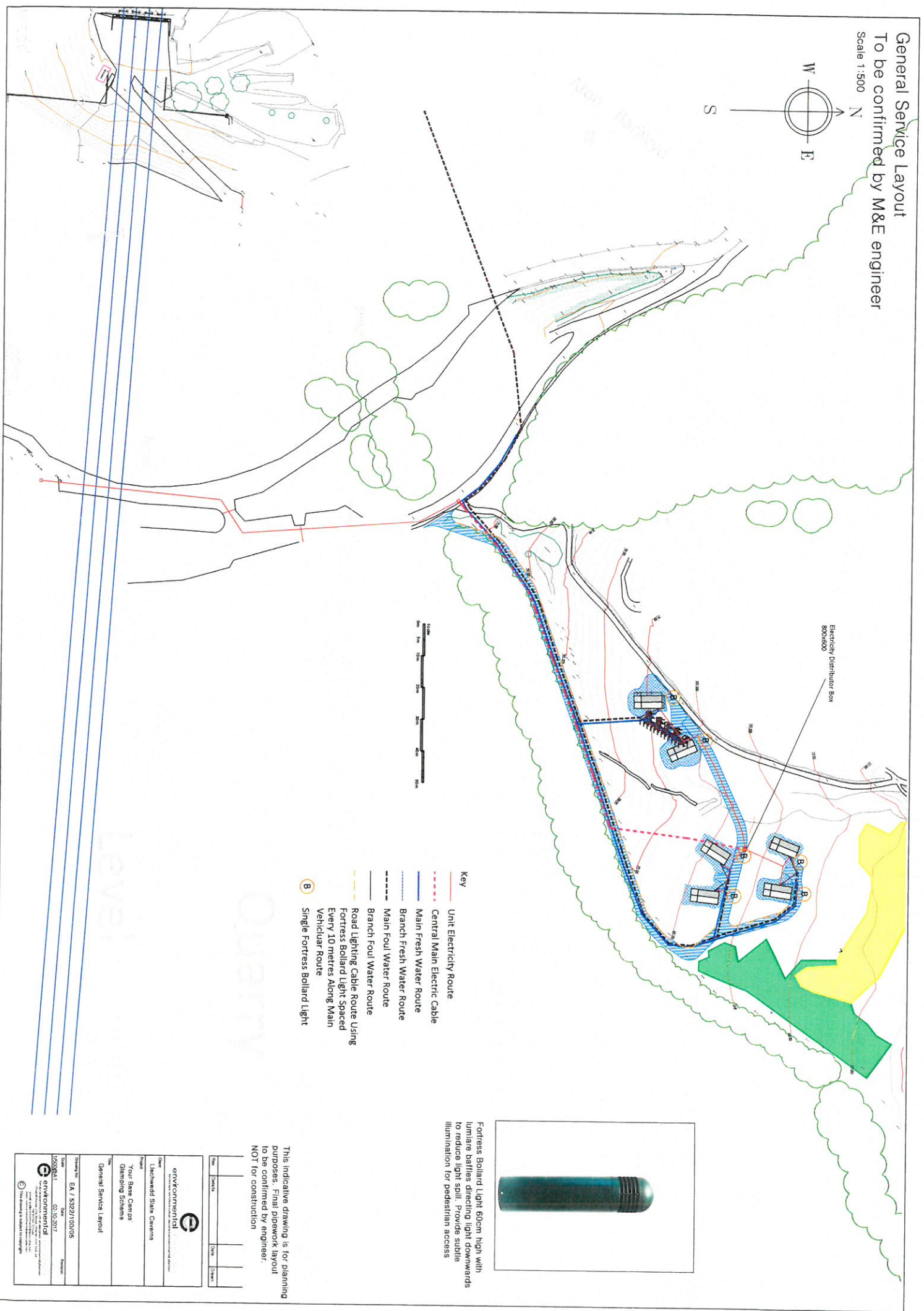
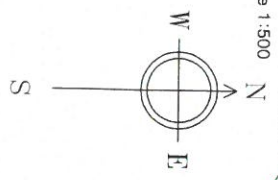
Proposed Glamping Site

| Zip Worl Trian          | Accommodation | Main Tourist Site                  | Boundaries            |
|-------------------------|---------------|------------------------------------|-----------------------|
| Quarry Explorer Route   | Glamping      | Bounce Below And Zip World Caverns | Land Ownership        |
| Antur Siniog Bike Trail | Hotel         | Main Tourist Site inc Deep Mine    | Quarries              |
| Hydro Pipeline          |               | Secondary Car Park                 | Tip Area              |
|                         |               |                                    | Inert Waste Transfers |



**General Service Layout**  
 To be confirmed by M&E engineer

Scale 1:500



- Key**
- Unit Electricity Route
  - Central Main Electric Cable
  - Main Fresh Water Route
  - Branch Fresh Water Route
  - Main Foul Water Route
  - Branch Foul Water Route
  - Road Lighting Cable Route Using Fortress Bollard Light Spaced Every 10 metres Along Main Vehicular Route
  - ⓑ Single Fortress Bollard Light



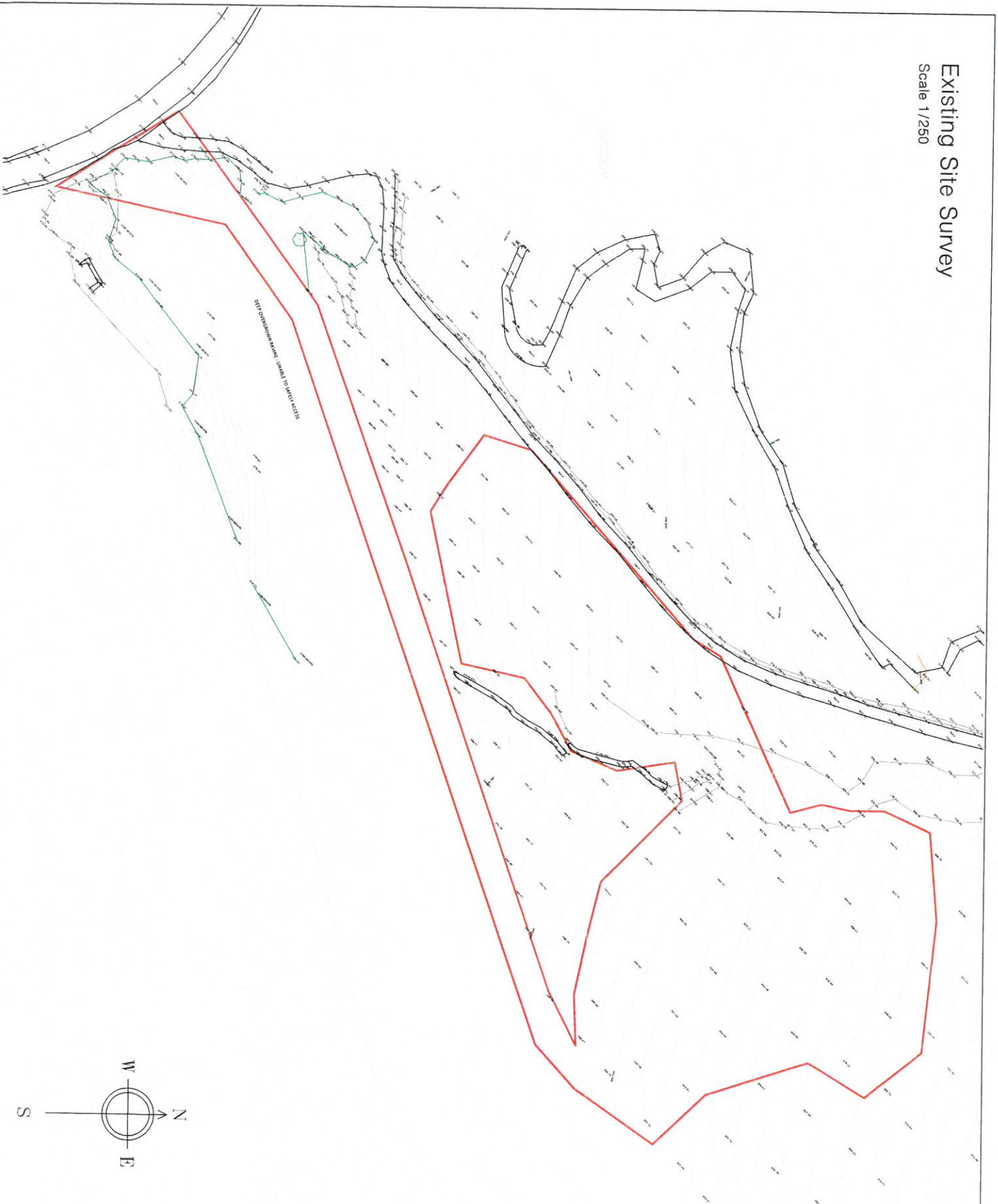
Fortress Bollard Light 60cm high with luminaire baffles directing light downwards to reduce light spill. Provides subtle illumination for pedestrian access

This indicative drawing is for planning purposes. Final pipework layout to be confirmed by engineer. NOT for construction

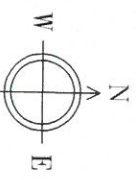
|  |            |           |         |
|--|------------|-----------|---------|
| Drawn  | Checked    | Drawn     | Checked |
|  |            |           |         |
| <b>environmental</b><br><small>Environmental Engineering &amp; Planning</small>  |            |           |         |
| Unit 10, The Old Mill, 1000 Old Mill Lane, Letchworth, Herts SG9 6EX   |            |           |         |
| Tel: 0457 634444 Fax: 0457 634445  |            |           |         |
| Email: <a href="mailto:info@environmental.co.uk">info@environmental.co.uk</a>  |            |           |         |
| Website: <a href="http://www.environmental.co.uk">www.environmental.co.uk</a>  |            |           |         |
| Project: Your Best Campus Clamping Scheme  |            |           |         |
| Title: General Service Layout  |            |           |         |
| Drawing No: EA / 5329/100/05   |            |           |         |
| Scale:   | Date:      | Revision: |         |
| 1:500  | 05/10/2012 |           |         |
| Environmental Engineering & Planning Ltd is a limited liability company registered in England No. 06429872.                |            |           |         |
| Environmental Engineering & Planning Ltd is an Equal Opportunity Employer.   |            |           |         |
| Environmental Engineering & Planning Ltd is a Carbon Trust Accredited Company.   |            |           |         |
| Environmental Engineering & Planning Ltd is a member of the Chartered Institution of Building Services Engineers (CIBSE).  |            |           |         |
| Environmental Engineering & Planning Ltd is a member of the Institution of Environmental Engineers and Technicians (IETT). |            |           |         |
| Environmental Engineering & Planning Ltd is a member of the Institution of Professional Engineers (IPE).                   |            |           |         |
| Environmental Engineering & Planning Ltd is a member of the Institution of Mechanical Engineers (IMECH).                   |            |           |         |
| Environmental Engineering & Planning Ltd is a member of the Institution of Civil Engineers (ICE).                          |            |           |         |
| Environmental Engineering & Planning Ltd is a member of the Institution of Structural Engineers (IStructE).                |            |           |         |
| Environmental Engineering & Planning Ltd is a member of the Institution of Electrical Engineers (IET).                     |            |           |         |
| Environmental Engineering & Planning Ltd is a member of the Institution of Chemical Engineers (IChemE).                    |            |           |         |
| Environmental Engineering & Planning Ltd is a member of the Institution of Mining Engineers (IMechE).                      |            |           |         |
| Environmental Engineering & Planning Ltd is a member of the Institution of Agricultural Engineers (IEng).                  |            |           |         |
| Environmental Engineering & Planning Ltd is a member of the Institution of Food Engineers (IFoodE).                        |            |           |         |
| Environmental Engineering & Planning Ltd is a member of the Institution of Food Technicians (IFoodT).                      |            |           |         |
| Environmental Engineering & Planning Ltd is a member of the Institution of Food Safety Engineers (IFoodSE).                |            |           |         |
| Environmental Engineering & Planning Ltd is a member of the Institution of Food Safety Technicians (IFoodST).              |            |           |         |
| Environmental Engineering & Planning Ltd is a member of the Institution of Food Safety Engineers (IFoodSE).                |            |           |         |
| Environmental Engineering & Planning Ltd is a member of the Institution of Food Safety Technicians (IFoodST).              |            |           |         |

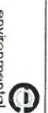
# Existing Site Survey

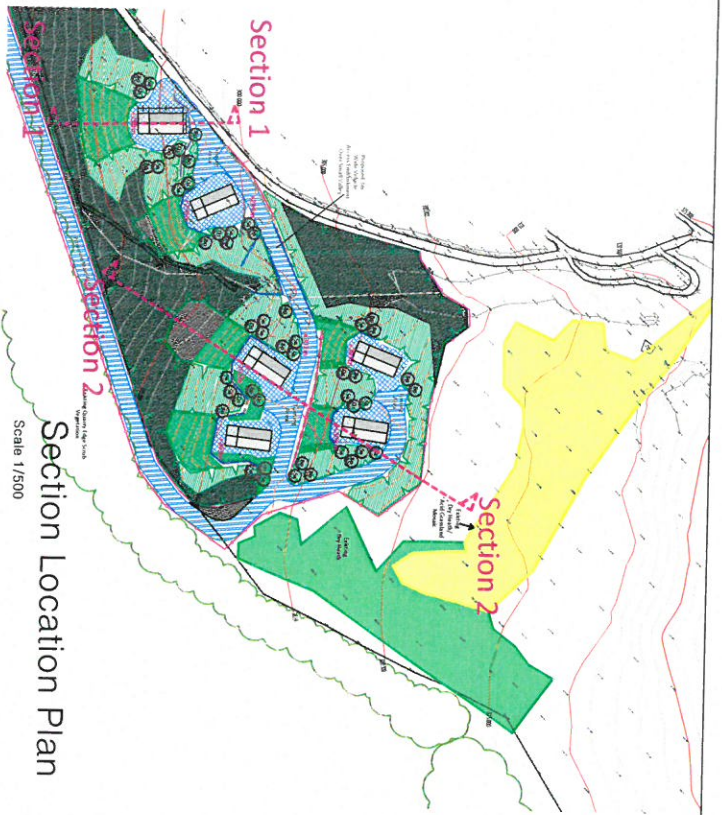
Scale 1/250



Key  
 Application Site boundary

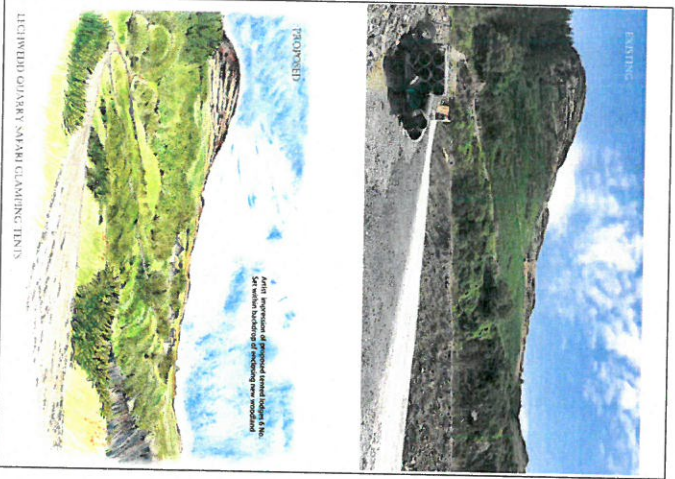
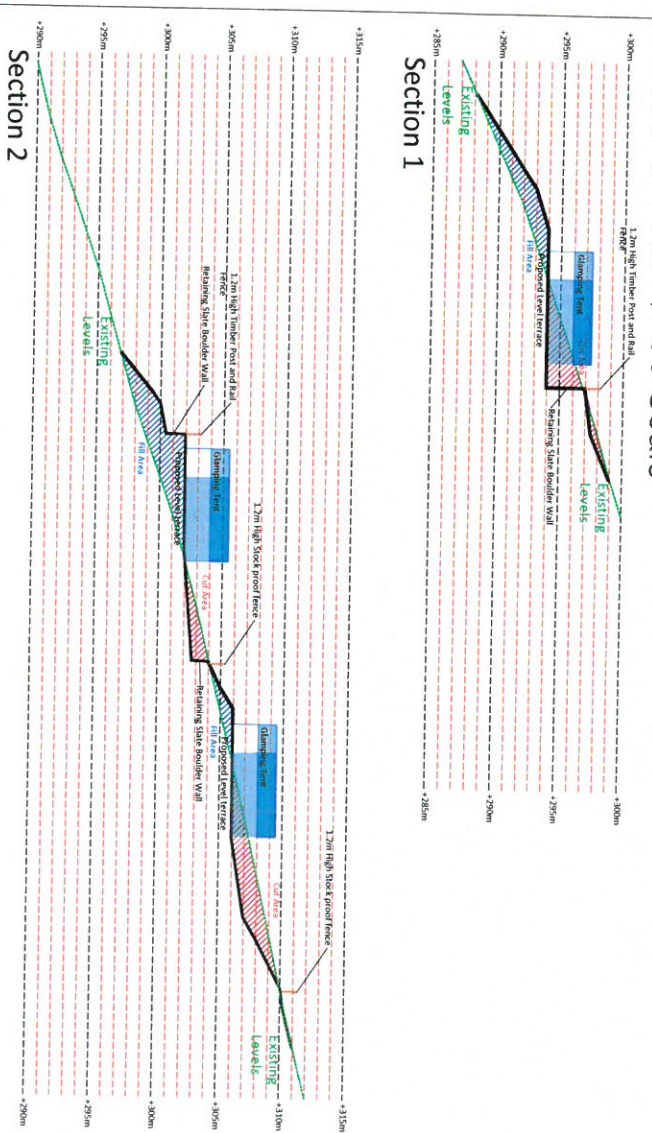


|   |                  |           |         |
|---|------------------|-----------|---------|
| Drawn   | Checked          | Drawn     | Checked |
| <br><b>environmental</b><br><small>THE NEW ZEALAND ENVIRONMENTAL CONSULTANCY COMPANY LIMITED</small>   |                  |           |         |
| Project: <b>Llancwedd Sains Campsite</b>  |                  |           |         |
| Client: <b>'Your Best Camps' Camping Schemes</b>  |                  |           |         |
| Title: <b>Existing Site Survey</b>  |                  |           |         |
| Drawing No:   | EA / 83291/00/02 | Revision: |         |
| Date:   | 02.10.2017       | Author:   |         |
| © environmental<br>Environmental Engineering Limited<br>1000 Lakes Road, P.O. Box 100, Waiwera, Auckland 1071<br>Tel: 09 276 1000 Fax: 09 276 1001<br>Email: <a href="mailto:info@environmental.co.nz">info@environmental.co.nz</a> |                  |           |         |



Section Location Plan  
Scale 1/500

Site Sections 1/200 Scale



EXISTING

PROPOSED

After approval of proposed layout, the client will be required to submit a detailed site plan to the local authority for approval.

LICHWARD QUARRY SSSI CLAMPING TENTS



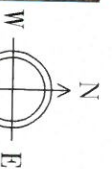
LICHWARD QUARRY SSSI CLAMPING TENTS



Prototype glamping tent, finish colours to blend in with surroundings



Prototype glamping tent, inside finishes



|             |   |
|-------------|---|
| Client      | envIRONMENTAL                                 |
| Project     | Lichward SSSI Clamping Tents                  |
| Task        | Year Base Camps Clamping Scheme Visualisation |
| Drawn       | EA / 5322/10/0/04                             |
| Checked     | EA / 5322/10/0/04                             |
| Scale       | 1:200   |
| Date        | 02-10-2017                                    |
| Version     | 02/10/2017                                    |
| Author      | EA  |
| Project No. | EA / 5322/10/0/04                             |
| Revision    | A   |